

PRODUCT
COLLECTION



MAXXIT

High-performance ceiling and wall
systems designed for modern spaces



Where creative engineering
meets architectural vision

maxxitgroup.com

MAXXIT

Bold Design. Built Right.

At Maxxit, we help architects and designers bring bold ideas to life — no compromises, no shortcuts. Whether it's a standard design, a sculptural wall element or a custom ceiling design, we engineer and manufacture solutions that turn imagination into precision-built reality.

YOUR VISION. OUR EXPERTISE.

We specialize in ceilings, walls, architectural elements, and retail environments, but the story doesn't end there. If you can dream it, we can build it — in metal, felt and millwork or any combination you can imagine. From concept through completion, Maxxit provides a single point of contact for design support, engineering, fabrication, and finishing — all under one roof.

WHAT SETS US APART

- **DESIGN ASSIST, BUILT-IN**

We act as an extension of your design team — offering creative, engineering-led insight to solve challenges early and add value throughout the project.

- **UNIQUE DESIGNS, LIMITLESS POSSIBILITIES.**

From escalator cladding and column covers to sculptural ceilings and modular wall systems, we build the pieces that don't fit in a catalog.

- **FASTER TIMELINES, TIGHTER CONTROL**

We control every phase of manufacturing — from state-of-the-art panel production to final finishing — for superior lead times and accountability.

- **SMARTER SOLUTIONS, BUILT TO FIT**

Our innovation-first mindset means we constantly look for ways to reduce weight, streamline installation, and maximize impact — without breaking the budget.



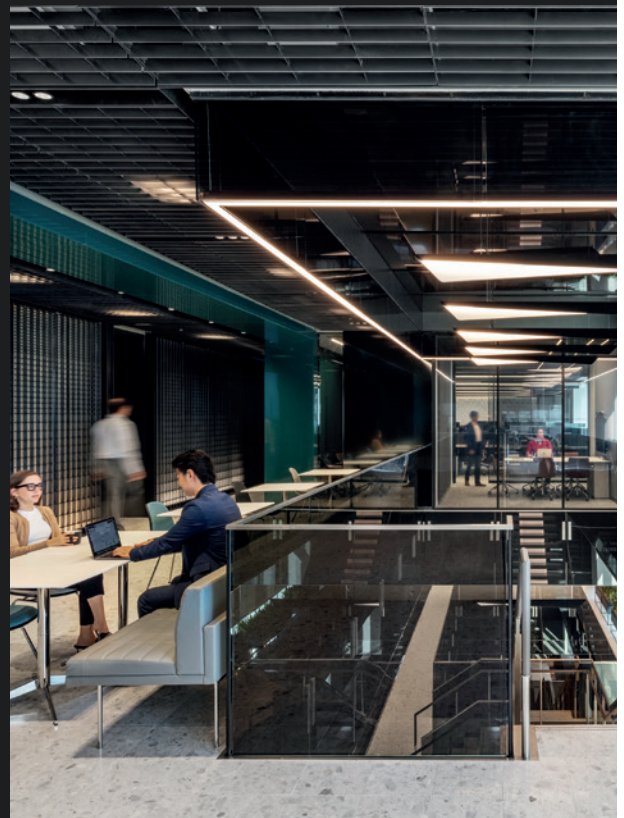
OUR STORY

What began 16 years ago as a boutique retail décor shop has evolved into a go-to resource for leading architects and contractors across North America. Today, Maxxit has contributed to thousands of projects for some of the world's most recognizable brands, from Morgan Stanley and JFK Airport to Southwest Airlines, and Kraft Heinz.



MORE THAN A MANUFACTURER. A CREATIVE PARTNER.

From standard products to one-of-a-kind designs, Maxxit is driven by the belief that nothing is impossible — and once you work with us, you'll see why our partners come back, project after project.



WHAT OUR PARTNERS SAY

"We've been impressed with the design assistance provided by Maxxit as Benoy was looking for workable design solutions, value engineering, and custom resolutions on complex designs."

— Lead Architect, Benoy



MAXXIT

Where creative engineering
meets architectural vision

WHY LEADING ARCHITECTS TRUST MAXXIT

At Maxxit, we bring together creative engineering, advanced manufacturing, and expert collaboration to help architects and designers realize their boldest visions.

Our multidisciplinary team understands materials, performance, and practical constraints—working closely with you from concept to installation to ensure seamless, successful results.

Engineered solutions, tailored to meet the demands of modern architecture.

Every project benefits from our flexible approach, technical precision, and commitment to solving challenges creatively. With limitless finish options, scalable systems, and deep experience across workplaces, public spaces, and retail environments, Maxxit delivers solutions that perform, inspire, and endure. Whether you're reimagining a single surface or shaping an entire environment, we are your trusted partner for architectural elements that bring spaces to life.

M

Co:LAB STUDIO

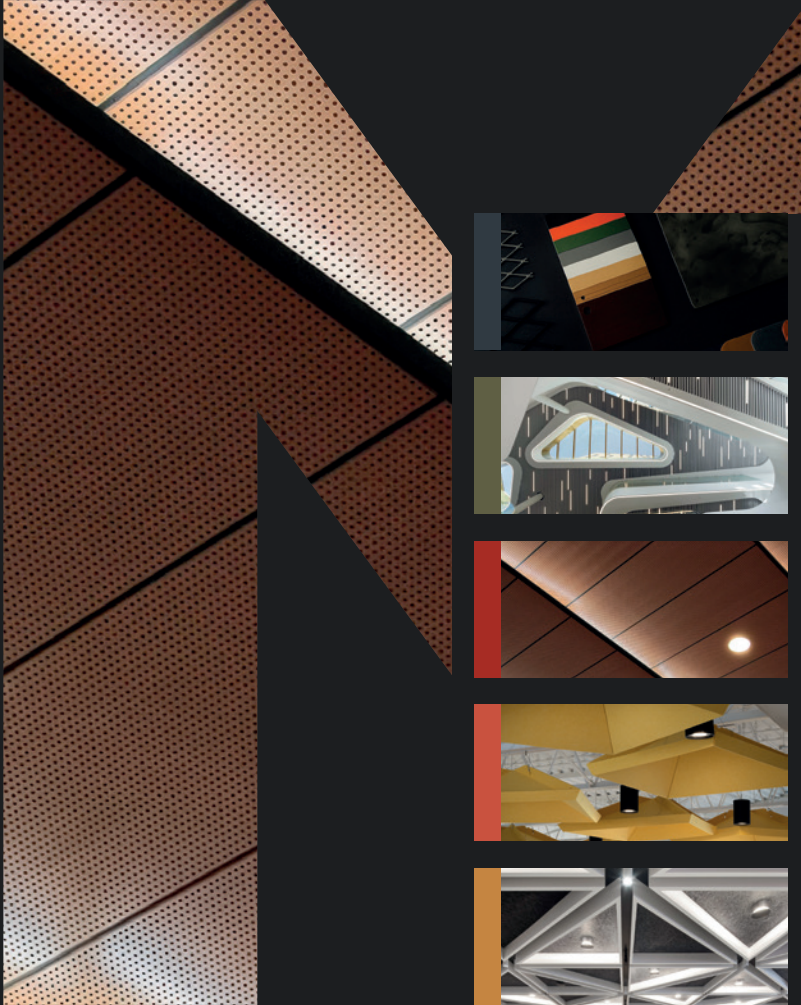
Our dedicated custom design service empowers architects and designers to bring unique visions to life, offering tailored solutions, material innovation, and expert collaboration—turning ambitious ideas into stunning architectural realities.



PRODUCT COLLECTION

Maxxit delivers custom ceilings, walls, and architectural features with precision, creativity, and performance — helping architects and designers bring visionary spaces to life.

CONTENTS



05—20 **Look Book**
A showcase of innovation

21—28 **M:Finish**
Finishes, stock and custom

29—68 **LINE:Form™**
Linear ceiling and wall systems

69—130 **PANEL:Form™**
Panel ceiling and wall systems

131—156 **AERO:Form™**
Floating ceiling systems

157—166 **Co:LAB STUDIO**
Custom as standard



Partner with Maxxit to create innovative, custom-engineered ceilings and walls that transform spaces and bring bold architectural visions to life.

Where creative engineering meets architectural vision

maxxitgroup.com

Look Book: Case Studies A SHOWCASE OF INNOVATION

Our **Look Book** showcases architectural excellence through 14 case studies from Emerson Electric, York University, Accenture, Place Victoria, Kraft Heinz, Rogers Centre, 400 Atlantic, and more, highlighting dynamic ceiling and wall solutions for innovative spaces.

Look Book: Case Studies

A SHOWCASE OF INNOVATION



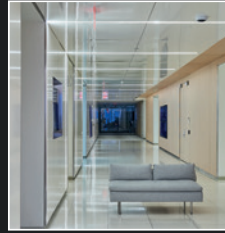
7
Emerson Electric



8
Accenture



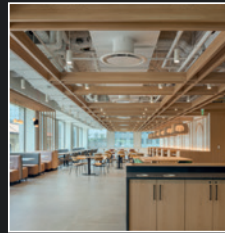
9
**York University
Markham Campus**



10
Confidential Client



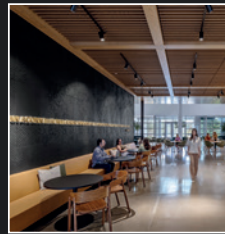
11
Kraft Heinz



12
400 Atlantic



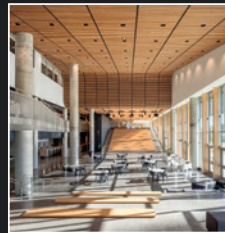
13
Rogers Centre



14
Co-Operators



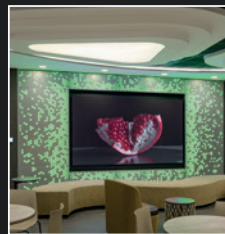
15
Place Victoria



16
Mirabel High School



17
**American Dream
Mall**



18
Humber College



19
IQHQ RaDD



20
**UBC Arts Student
Centre**



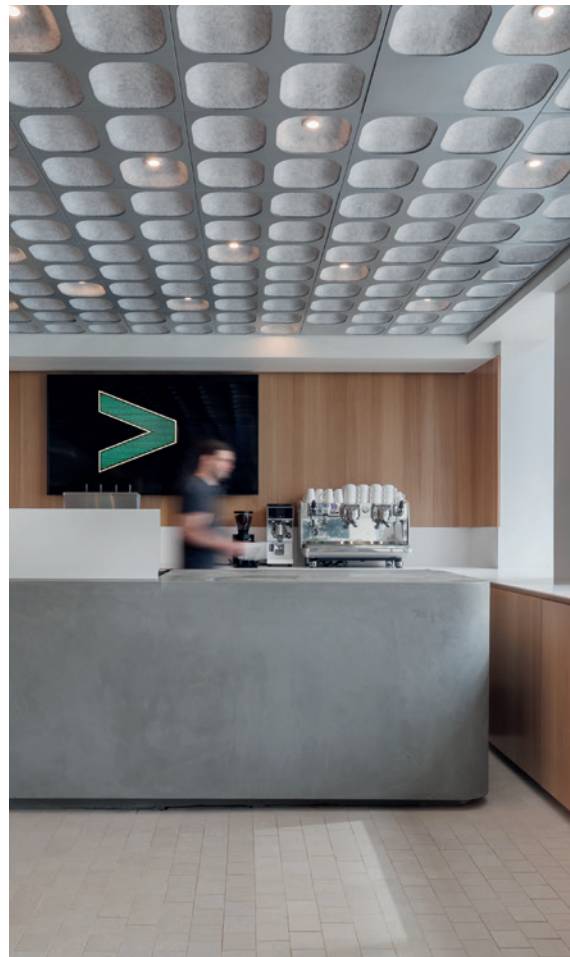
EMERSON ELECTRIC

PANEL:Form™ BACKLIT PANEL

LINE:Form™ TRADITIONAL BAFFLE

At **Emerson Electric's** new Cranberry Woods space, our **PANEL:Form™** Backlit Panels and **LINE:Form™** Traditional Baffles deliver innovative design, acoustic performance, and striking aesthetics for a dynamic, sustainable workspace.





ACCENTURE

PANEL:Form™ CONCAVE PANEL

At Accenture's Montreal office, our **PANEL:Form™** Concave Panels seamlessly combine metal and felt for striking aesthetics, integrated lighting, and exceptional acoustics—enhancing productivity and employee experience in an open concept workspace.



YORK UNIVERSITY MARKHAM CAMPUS

LINE:Form™ TRADITIONAL BAFFLE

LINE:Form™ WAVE BAFFLE

At **York University Markham Campus**, we delivered innovative ceiling solutions, featuring **LINE:Form™** Traditional and Wave baffles. The design enhances acoustics, aesthetics, and wayfinding, fostering connection and collaboration.





CONFIDENTIAL CLIENT

PANEL:Form™ CUSTOM CEILING PANEL

At this **Confidential Client**, our **PANEL:Form** Custom ceiling panels seamlessly integrate with lighting, signage, and sprinklers—delivering custom aesthetics, precision engineering, and flawless functionality for a modern, high-profile space.





KRAFT HEINZ

LINE:Form™ WAVE BAFFLE

AERO:Form™ CROSSROADS OPEN CELL

AERO:Form™ CLOUD

At **Kraft Heinz's** dynamic tech hub, our **LINE:Form™** Wave Baffle and **AERO:Form™** Crossroads Open Cell and Cloud solutions deliver acoustic comfort and visual impact — fostering productivity, collaboration, and a vibrant work environment.





400 ATLANTIC

LINE:Form™ PARTITION

AERO:Form™ PARALLEL OPEN CELL

PANEL:Form™ MESH PANEL

At 400 Atlantic, our **AERO:Form™** Parallel Open Cell, **PANEL:Form™** Mesh Panel and **LINE:Form™** Partitions create a cohesive, sophisticated environment—integrating aesthetics, functionality, and seamless lighting for an activity-based workspace.



ROGERS CENTRE

LINE:Form™ CUSTOM WALL SLAT

PANEL:Form™ CUSTOM CEILING PANEL

AERO:Form™ CUSTOM OPEN CELL

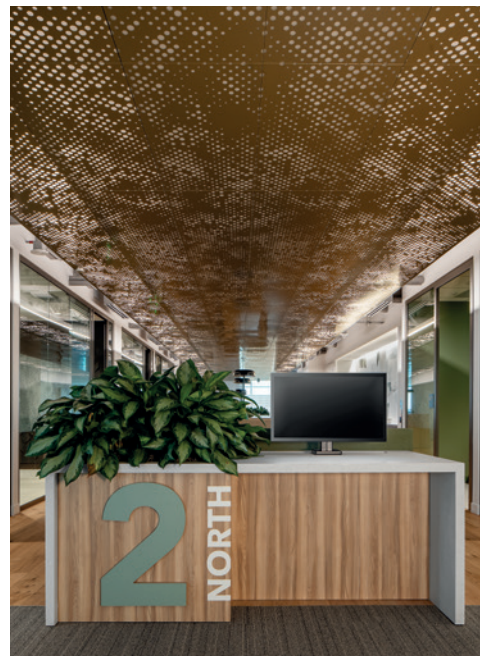
At **Rogers Centre**, our **LINE:Form™** Custom Wall Slat alongside our **PANEL:Form™** and **AERO:Form™** custom designs deliver an elevating guest experiences with effortless integration and durable solutions across vibrant social and entertainment spaces.



CO-OPERATORS

PANEL:Form™ CUSTOM DESIGN PERFORATED WALL PANEL
PANEL:Form™ CUSTOM DESIGN PERFORATED CEILING PANEL

The new **Co-Operators** HQ in Guelph is a cutting-edge facility that reflects the company's vision for efficiency, technology, and employee well-being.





PLACE VICTORIA

AERO:Form™ TRILATERAL OPEN CELL

At **Place Victoria**, our **AERO:Form™** Trilateral Open Cell redefines urban aesthetics—seamlessly blending acoustics, dimension, and modern design to create a visually captivating transit hub in Montreal.



MIRABEL HIGH SCHOOL

LINE:Form™ CUSTOM CEILING SLATS

The **Mirabel High School** project exemplifies how architectural elements can contribute to a vibrant and inspiring educational setting through meticulous craftsmanship and thoughtful design.





AMERICAN DREAM MALL

AERO:Form™ CUSTOM OPEN CELL

At **American Dream Mall**, our **AERO:Form™** Custom 6-point snowflake-like design ceiling detail captures a modern, winter-inspired aesthetic - enhancing the ambiance of the Big Snow indoor ski resort.





HUMBER COLLEGE

PANEL:Form™ CUSTOM BACKLIT WALL PANEL

At Humber College's Town Square, our PANEL:Form™ Backlit Wall Panel project aims to revitalize Humber College's retail offerings, creating a more connected, accessible, and engaging campus for students, with the Town Square at its heart.





IQHQ RESEARCH AND DEVELOPMENT DISTRICT

LINE:Form™ CUSTOM EXTERIOR BAFFLE

PANEL:Form™ CUSTOM EXTERIOR WALL PANEL

At **IQHQ Research and Development District**, our **LINE:Form™** Exterior Baffle and **PANEL:Form™** Exterior Wall Panels redefine San Diego's downtown landscape, fostering innovation while enhancing community engagement through its dynamic blend of science, commerce, and public spaces.





UBC ARTS STUDENT CENTRE

LINE:Form™ EXTERIOR WALL FIN

At the **UBC Arts Student Centre**, our **LINE:Form™** Exterior Wall Fins precisely integrate with the circular facade, and are carefully engineered to maintain the integrity of the cladding, allowing for water drainage without compromising performance.





OVERVIEW

M:Finish | FINISHES, STOCK AND CUSTOM

MAXXIT

M:Finish

METAL & FELT FINISHES

Elevate both commercial interiors and exteriors with architectural finishes that combine style, durability, and versatility. Select from standard options like sleek metal for a modern industrial edge, wood-look for a warm, natural feel, or felt for a soft, acoustically enhanced ambiance. For exterior applications, explore robust finishes engineered to withstand the elements.

Co:LAB STUDIO

Custom finish solutions - including wood veneers - are also available, allowing you to tailor colors, textures, and materials to suit your brand or design vision. **See page 157.**

PROJECT: Accenture - Reimagined in Olive Gray felt and custom powdercoat.
PRODUCT: PANEL:Form™ Concave Panel



PROJECT: York University, Markham Campus
PRODUCT: LINE:Form™ Traditional Baffle

PROJECT: World Exchange Plaza
PRODUCT: LINE:Form™ Custom Baffle
Designed in the Co:LAB STUDIO - See page 157



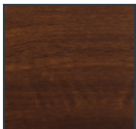


M:Finish | METAL FINISHES

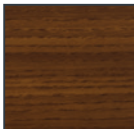
WOOD LOOK FINISHES

Standard Powder Coated Paint Finishes

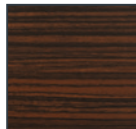
(Interior & Exterior) Formaldehyde-Free



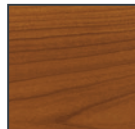
National Walnut



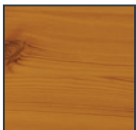
Chestnut



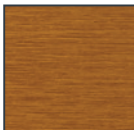
Rosewood



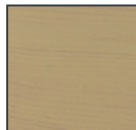
European Cherry



Knotty Pine



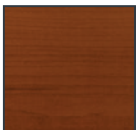
Oak Fine



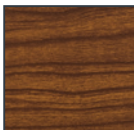
Maple



American Douglas



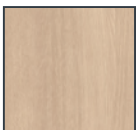
American Maple



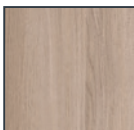
Teak

Standard Laminated (Film) Finishes

(interior only). Formaldehyde-free



Canadian Oak



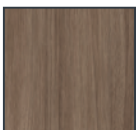
White Oak



American Natural



Italian Walnut



North Oak



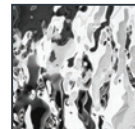
Black Walnut



Brazilian Walnut

STAINLESS STEEL FINISHES

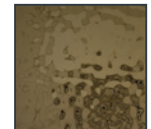
Colors



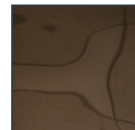
Silver



Blue



Champagne

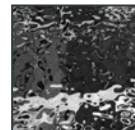


Copper

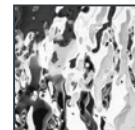


Black

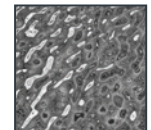
Textures



Soft #2



Flow



Ripple #2

CUSTOM FINISHES



At Maxxit we have a passion for finishes.
Whatever your challenge is, we can match it!
Send us a color sample so we can quickly provide a color match.



M:Form
METAL Finishes

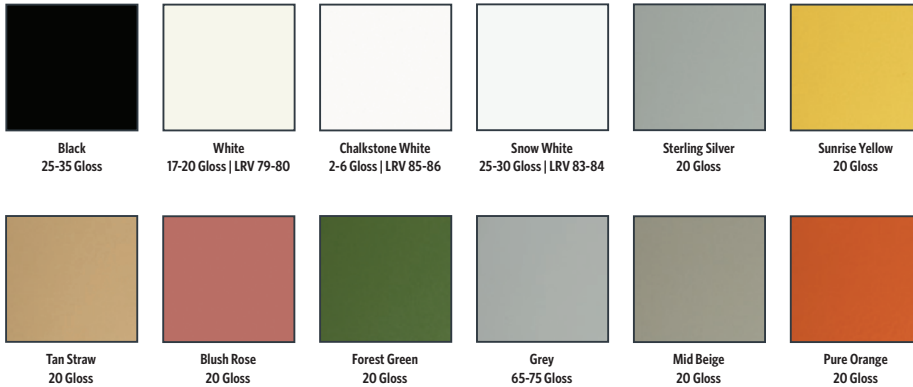
Our diverse metal finishes combine aesthetic versatility with durability and precision, ideal for enhancing commercial walls and ceilings.

STANDARD COLOR FINISHES

Powder Coated Paint Finishes

(Interior & Exterior) Formaldehyde-Free

Maxxit powder coat finishes offer superior chemical, scratch and UV resistance, they do not emit VOC's and are available in a broad range of textures, glosses and specialty looks.



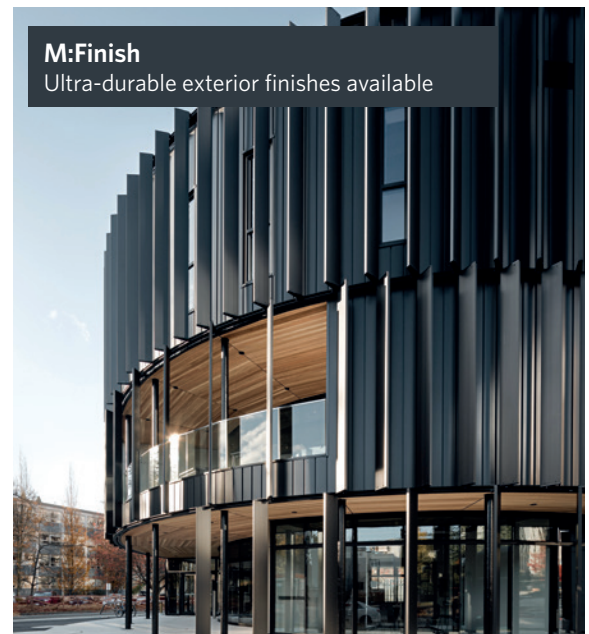
CUSTOM COLORS



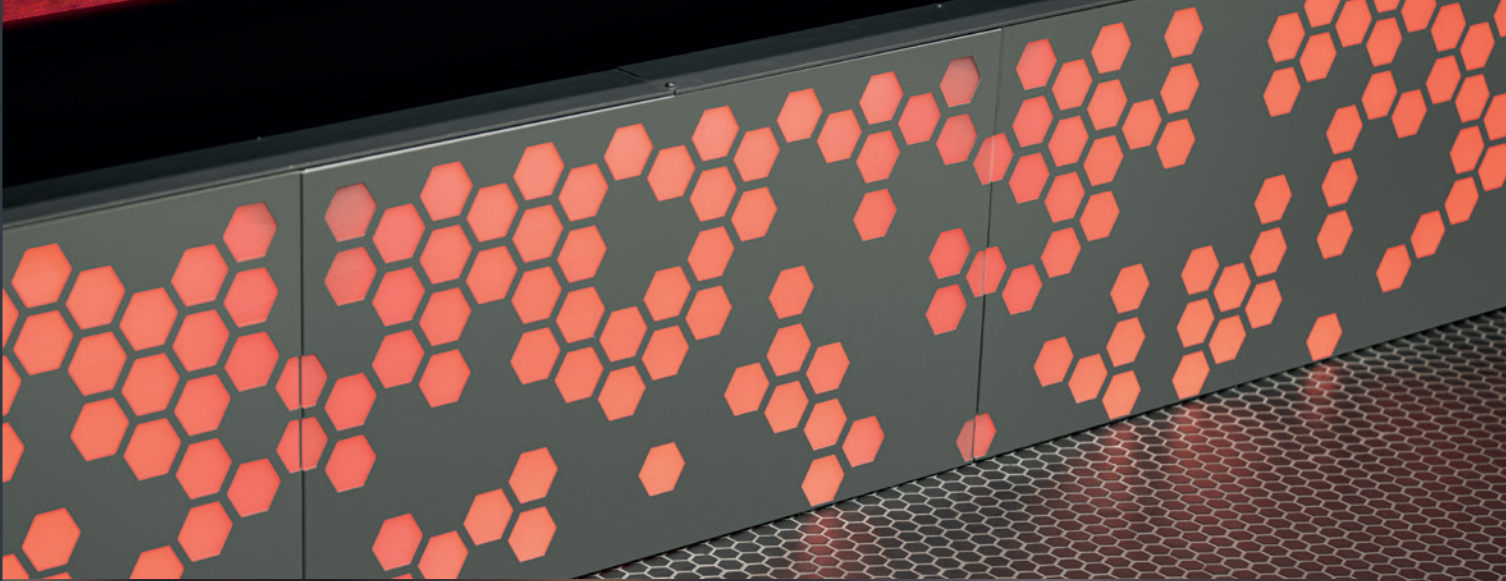
Custom colors available

Powder Coated, Bonded Metallic Finishes

(Interior & Exterior) Formaldehyde-Free



M:Finish
Ultra-durable exterior finishes available



M:Finish | METAL PERFORATION FINISHES

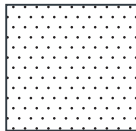
PERFORATIONS

Perforation patterns may be limited or not available for some product styles and designs. Perforation border size varies based on product style, size, and perforation pattern. For specific details, please reach out to your Maxxit representative.

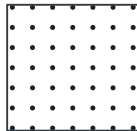
Standard Perforations Angles - Staggered 60°



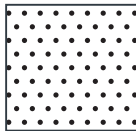
S01 Unperforated



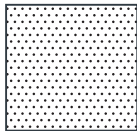
S02 Staggered
Diameter 0.0625"
Open area 4.50%
Centers 0.2812"



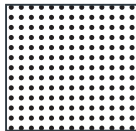
S03 Straight
Diameter 0.125"
Open area 4.90%
Centers 0.5"



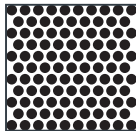
S04 Staggered
Diameter 0.125"
Open area 9.90%
Centers 0.3788"



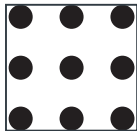
S05 Staggered
Diameter 0.0625"
Open area 10.10%
Centers 0.1875"



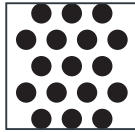
S06 Straight
Diameter 0.125"
Open area 19.60%
Centers 0.25"



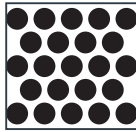
S07 Staggered
Diameter 0.25"
Open area 58%
Centers 0.3125"



S08 Straight
Diameter 0.5625"
Open area 17.50%
Centers 1.1908"

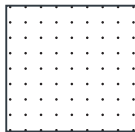


S09 Staggered
Diameter 0.5"
Open area 40.30%
Centers 0.75"

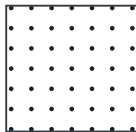


S10 Staggered
Diameter 0.5"
Open area 58%
Centers 0.625"

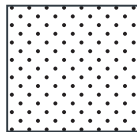
Premium Perforations Angles - Diagonal 45° | Staggered 60°



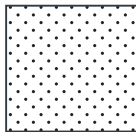
P11 Straight
Diameter 0.0625"
Open area 2.10%
Centers 0.3788"



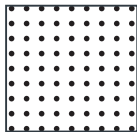
P12 Straight
Diameter 0.098"
Open area 4.14%
Centers 0.427"



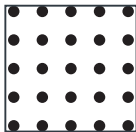
P13 Diagonal
Diameter 0.098"
Open area 8.28%
Centers 0.3019"



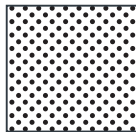
P14 Diagonal
Diameter 0.078"
Open area 26.53%
Centers 0.1898"



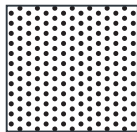
P15 Straight
Diameter 0.1181"
Open area 11.04%
Centers 0.315"



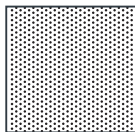
P16 Straight
Diameter 0.2362"
Open area 12.57%
Centers 0.5906"



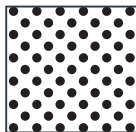
P17 Diagonal
Diameter 0.1181"
Open area 22.09%
Centers 0.2227"



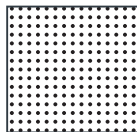
P18 Staggered
Diameter 0.125"
Open area 22.70%
Centers 0.25"



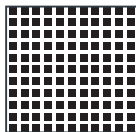
P19 Staggered
Diameter 0.0625"
Open area 22.70%
Centers 0.125"



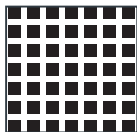
P20 Diagonal
Diameter 0.2362"
Open area 25.14%
Centers 0.4176"



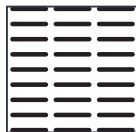
P21 Straight
Diameter 0.098"
Open area 16.55%
Centers 0.2135"



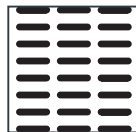
P22 Square Straight
Hole Size 0.197" x 0.197"
Open area 44.60%
Centers 0.295"



P23 Square Straight
Hole Size 0.315" x 0.315"
Open area 40.99%
Centers 0.492"



P24 Oblong Straight
Hole Size 0.984" x 0.059"
Open area 26%
Centers 0.394"



P25 Oblong Straight
Hole Size 0.787" x 0.079"
Open area 31.90%
Centers 0.394"



P26 Diagonal
Hole Size 0.394" x 0.079"
Open area 25.75%
Centers 0.469"



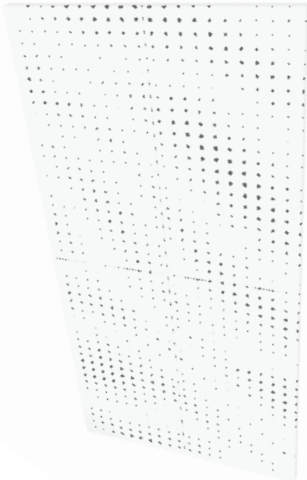
M:Form

METAL Perforation Finishes

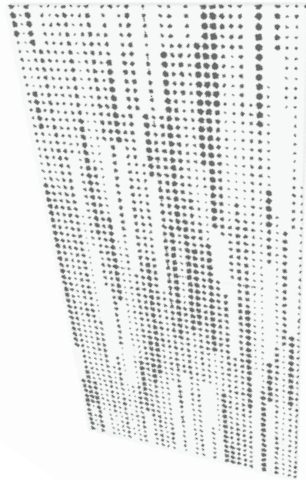
Expertly crafted patterns enhance aesthetics while optimizing acoustics, airflow, and lighting integration. From bold, modern statements to subtle textures, our perforated metal solutions bring precision, durability, and performance to wall and ceiling designs.

MADE TO ORDER PATTERNS

Design Perforated Patterns



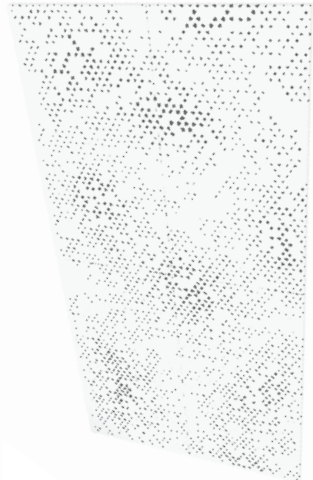
Aqua Flow



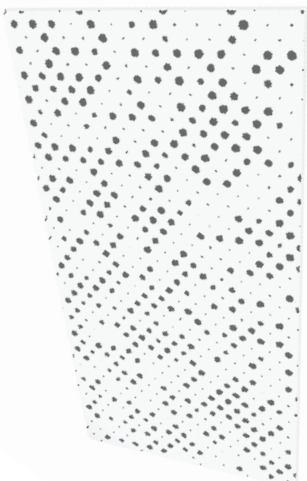
Bitstream



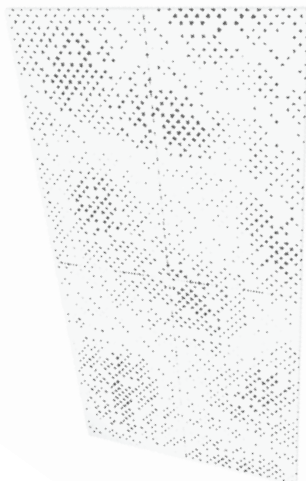
Ripple



Nebula Mist



Starlight



Woodland

Perforated Imaging

Perforated imaging employs high-tech manufacturing methods to create detailed images using perforations.

Supply us an image, logo or text and we'll apply it onto a metal panel, providing your space with a customized design.

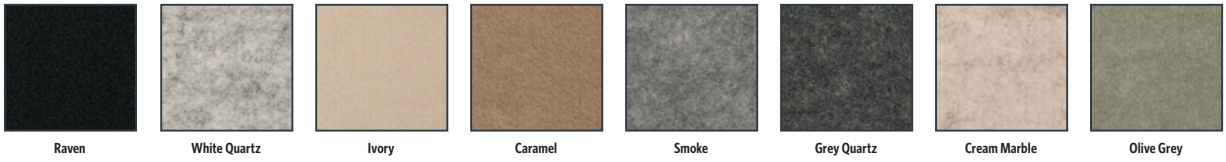




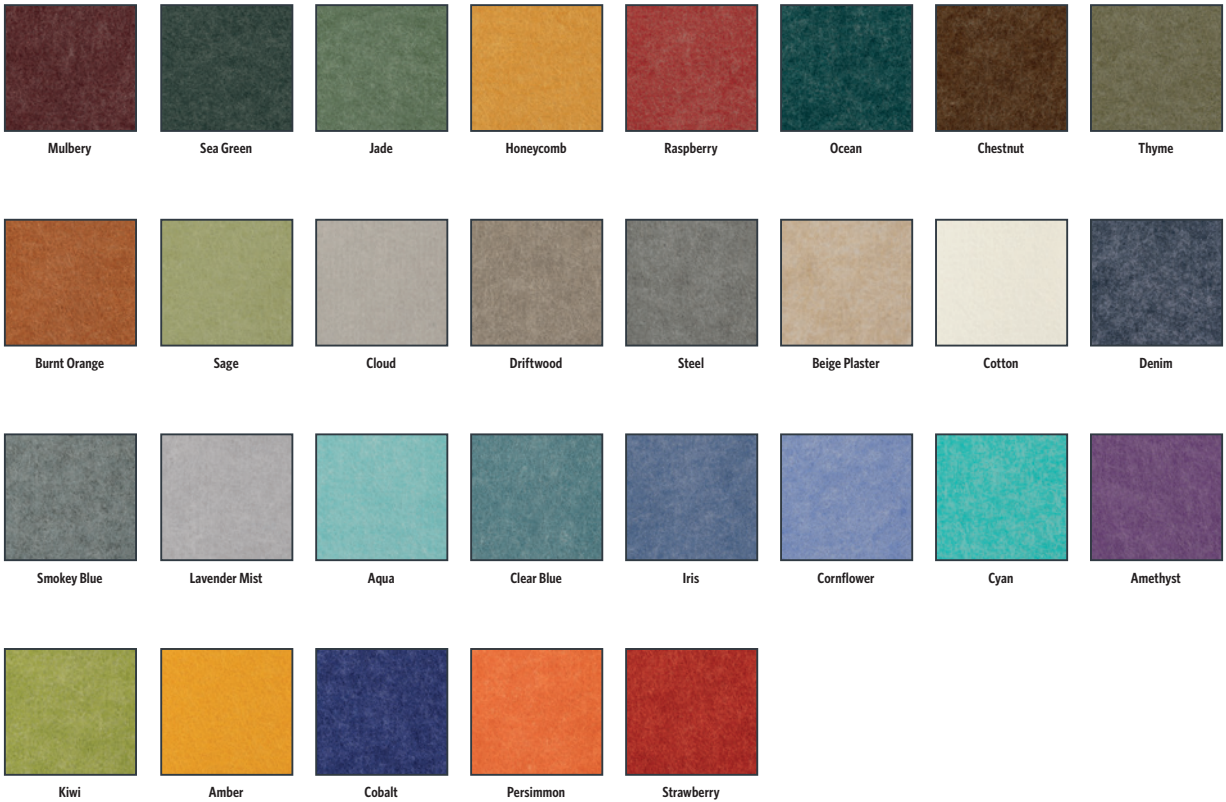
M:Finish | FELT FINISHES

FELT

Standard Colors - Quick Ship



Standard Colors





M:Form FELT Finishes

Enhance interior spaces with the warmth and functionality of felt finishes. Designed for both aesthetics and acoustics, our felt panels and baffles offer rich textures, sound absorption, and a contemporary edge.

Woodgrain



Dark Walnut

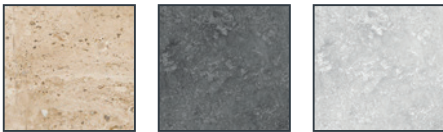
Natural Maple

Red Oak

Weathered Grey

White Oak

Limestone



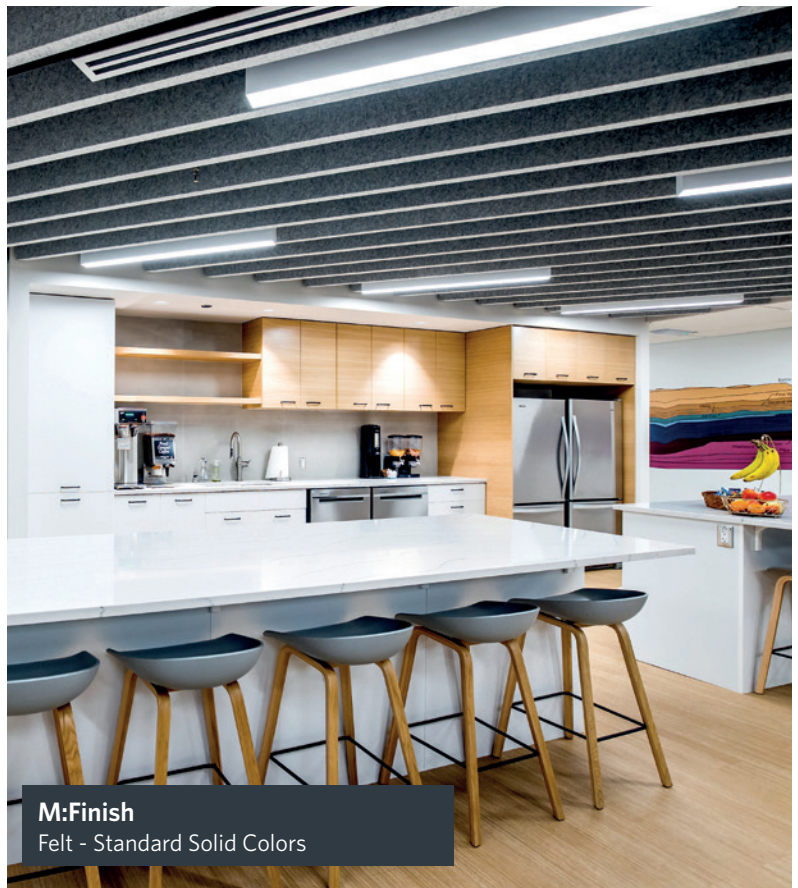
Beige

Grey

White

All colors are available in both 9mm and 12mm, with the Quick Ship option offered exclusively in 9mm.

Please note: Colors shown in this catalog may not be an exact representation of the actual product due to variations in lighting, screen settings, and printing processes. We recommend requesting a physical sample for the most accurate color match.



M:Finish
Felt - Standard Solid Colors



LINE:Form™ LINEAR SYSTEMS
BAFFLES, FINS, PLANKS AND PARTITIONS

PROJECT: The Score
PRODUCT: LINE:Form™ Traditional Baffle



MAXXIT

LINE:Form™

LINEAR BAFFLE, FIN, PLANK AND PARTITION SYSTEMS

LINE:Form™ is a collection of precision-engineered Linear Baffle, Fin, Plank and Partition systems designed for architectural ceilings, walls and partitioning. Combining clean lines, modular versatility, and acoustic performance, LINE:Form™ offers specifiers a seamless way to create structured, responsive settings with refined aesthetics and functional appeal.



M
 LINE:Form™
BAFFLE SYSTEMS

Precision-crafted **linear baffle solutions** for ceilings, offering modular versatility, acoustic performance, and seamless integration with various mounting systems.

Page 31



M
 LINE:Form™
WALL FIN SYSTEM

Engineered **Fin solutions** designed for refined aesthetics, uninterrupted profiles, and adaptable configurations across interior and exterior walls.

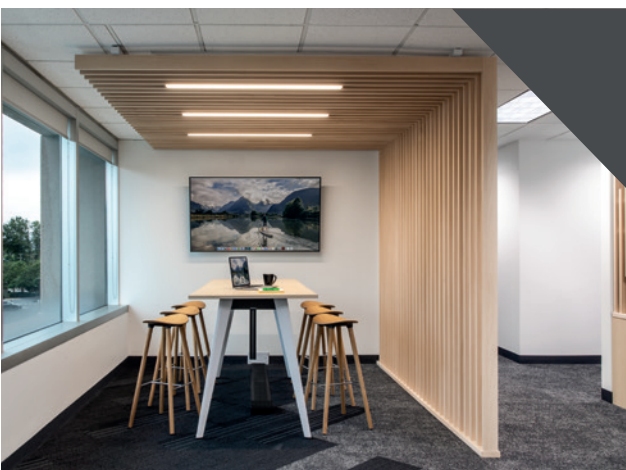
Page 53



M
 LINE:Form™
LINEAR PLANK SYSTEM

Sleek, durable **metal planks** with limitless finishes and seamless installation for stylish, low-maintenance interior or exterior ceilings.

Page 59



M
 LINE:Form™
PARTITION SYSTEM

Versatile **linear partitions** that define open spaces with style, providing customizable finishes and adaptable installation options.

Page 63



LINE:Form™ BAFFLE SYSTEMS

LINE:Form™ Baffle Systems offer precision-crafted **linear baffle solutions** designed to enhance acoustics, aesthetics, and spatial definition. With modular versatility and seamless integration into various ceiling applications, these lightweight, customizable baffles provide effortless installation, adaptable mounting options, and a wide range of finishes to suit any architectural vision.

PROJECT: EA Games
PRODUCT: LINE:Form™ Custom Extruded Baffle
Designed in the Co:LAB STUDIO - See page 157



LINE:Form™ BAFFLE SYSTEMS



33—38

LINE:Form™ TRADITIONAL

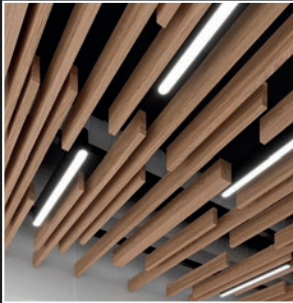
METAL
FELT



39—42

LINE:Form™ TRADITIONAL EXTRUDED

INTERIOR METAL
EXTERIOR METAL



43—44

LINE:Form™ ELEVATIONS

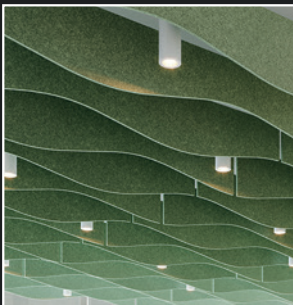
METAL
FELT



45—46

LINE:Form™ ANGLE

METAL
FELT



47—50

LINE:Form™ WAVE

METAL
FELT



WOOD

In addition to metal and felt, we craft custom wood baffles. Explore **Co:LAB STUDIO** on page 157 for bespoke wood finishes tailored to your vision.



LINE:Form™ | TRADITIONAL
BAFFLE SYSTEM

MAXXIT

LINE:Form™ | TRADITIONAL BAFFLE

PROJECT: York University, Markham Campus
PRODUCT: LINE:Form™ Traditional Baffle



PROJECT: Haynes Boone HQ
PRODUCT: LINE:Form™ Traditional Baffle

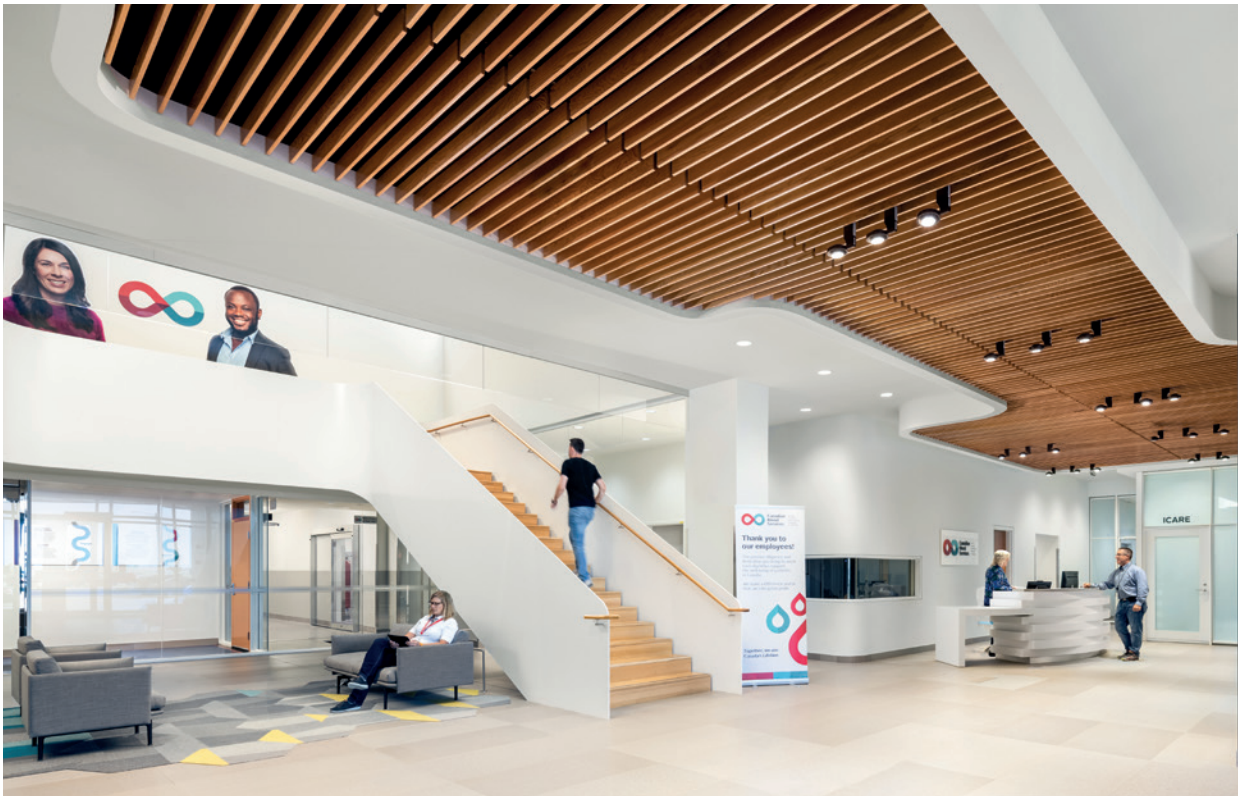


PROJECT: Mother Parkers
PRODUCT: LINE:Form™ Custom
Designed in the Co:LAB STUDIO - See page 157

LINE:Form™ Traditional is a collection of precision-engineered linear baffles, designed for architectural ceilings — offering specifiers a seamless way to create structured, versatile, acoustically optimized settings with refined aesthetics and functional appeal.



PROJECT: Edo Japan
PRODUCT: LINE:Form™ Traditional Baffle



PROJECT: CBS Calgary
PRODUCT: LINE:Form™ Traditional Baffle



PROJECT: Pacific Life Re
PRODUCT: LINE:Form™ Traditional Baffle



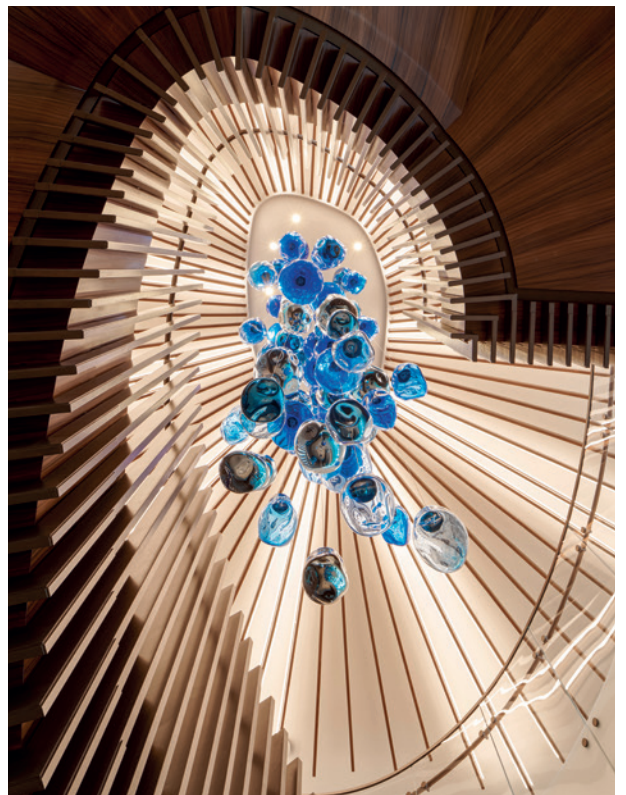
PROJECT: MMGY Expansion
PRODUCT: LINE:Form™ Traditional Baffle



PROJECT: BGC Engineering
PRODUCT: LINE:Form™ Traditional Baffle

PROJECT: Haynes Boone HQ
PRODUCT: LINE:Form™ Traditional Baffle

PROJECT: BGC Engineering
PRODUCT: LINE:Form™ Traditional Baffle





LINE:Form™ | TRADITIONAL BAFFLE

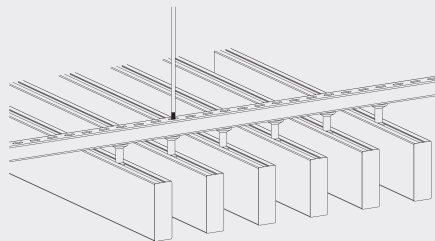
M

LINE:Form™ Traditional is a lightweight, pre-assembled ceiling baffle with versatile installation, easy plenum access, and limitless finishes. It integrates seamlessly with various mounting systems while ensuring effortless cleanability and durability.

KEY FEATURES

- Lightweight, pre-assembled & easy to install
- Versatile attachment options for Unistrut®, 15/16" HD Grid and cable-suspended applications
- Felt Traditional Baffles are available in Blade and Profile styles
- Easy plenum access - attachment hardware allows baffles to slide for easy plenum access and adjustment during installation
- Unlimited finish options - custom colors, wood looks, films and felt
- Cleanable using CDC recommended and EPA-approved disinfectants for fog, spray & wipe

HOW IT WORKS



Standard sizes available made to order:

Metal

Lengths - up to 12'
 Depths - up to 15"
 Widths - up to 24"

Felt Profile

Standard products available made to order in 1/4" increments:
 Lengths - up to 8'
 Depths - up to 12"
 Width - 1.5", 2" (Minimum width = 1.5")

Felt Blade

Standard products available made to order in 1/4" increments:
 Lengths - up to 8'
 Depths - up to 48"
 Width - 9mm & 12mm



LINE:Form™ | TRADITIONAL Baffle
METAL

Durable and versatile, our **metal finishes** offer a sleek, modern aesthetic with customizable colors, textures, and perforation options. Designed for longevity, they provide a high-end architectural look with exceptional durability.

PHYSICAL DATA



MATERIALS:
Aluminum | Fabricated.
Thickness 0.041" - 0.060" design dependent.



WEIGHT:
Varies from 0.67 - 1.10 lbs./ln.ft.



WARRANTY:
One Year Limited.



FIRE PERFORMANCE:
ASTM E84, Class A. CAN/ULC - S102.2.



SURFACE FINISH:
Factory-applied polyester paint.
Available in Standard Colors, Color Matched and Wood Look.



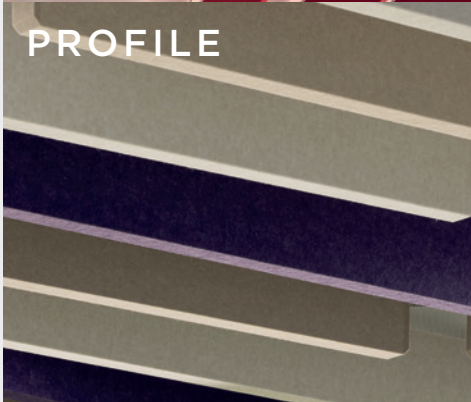
ACOUSTICAL OPTIONS:
Perforated components can be supplied with optional acoustic infill to absorb sound — NRC values vary based on design and configuration.



SUSTAINABILITY:
Supports LEED v5 categories including Embodied Carbon, Indoor Air Quality, Quality of Life- Acoustics, Materials Transparency and Circular Economy.



BLADE



PROFILE

LINE:Form™ | TRADITIONAL Baffle
FELT

Soft, textured, and acoustically effective, our **felt finishes** add warmth and depth to any space. Available in a wide range of colors, they provide both visual appeal and enhanced sound absorption for refined environments.

PHYSICAL DATA



MATERIALS:
(PET) polyester felt. Felt thickness - 9mm (3/8" nominal) and 12 mm (1/2" nominal), other thicknesses available upon request. Application - Felt is not approved for exterior application.



WEIGHT:
Profile: 0.69 - 1.17 lbs./ln.ft.
Blade: 0.20 - 0.33 lbs./ln.ft.



WARRANTY:
One Year Limited



FIRE PERFORMANCE:
ASTM E84, Class A. CAN/ULC - S102.2.



VARIATION:
With all felt products color and texture may vary from order to order; adequate attic stock should be ordered.



ACOUSTICS:
Sound absorbing acoustic felt, NRC design dependent.



SUSTAINABILITY:
Supports LEED v5 categories including Embodied Carbon, Indoor Air Quality, Quality of Life- Acoustics and Materials Transparency.



Co:LAB STUDIO

LINE:Form™ | TRADITIONAL Baffle
WOOD

From natural wood to realistic wood-effect felt and metal, we craft custom solutions. Explore **Co:LAB STUDIO on page 157** for bespoke wood finishes tailored to your vision.



LINE:Form™ | TRADITIONAL EXTRUDED BAFFLE

PROJECT: World Exchange Plaza
PRODUCT: LINE:Form™ Custom
Designed in the Co:LAB STUDIO - See page 157



PROJECT: World Exchange Plaza
PRODUCT: LINE:Form™ Traditional Extruded Baffle

Designed for **interior and exterior applications**, **LINE:Form™ Traditional Extruded** offers durable, precision-crafted linear metal baffles with a sleek, architectural aesthetic. Engineered for strength and versatility, it provides seamless integration, weather resistance, and customizable finishes to suit any design vision.

PROJECT: Vancouver Airport
PRODUCT: LINE:Form™ Traditional Extruded Baffle



PROJECT: Rogers Centre, VIP Entrance
PRODUCT: LINE:Form™ Traditional Extruded Baffle Exterior



LINE:Form™ | TRADITIONAL EXTRUDED BAFFLE

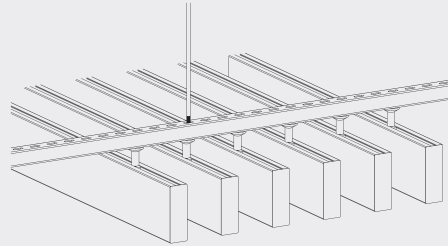
M

LINE:Form™ Traditional Extruded is a high performance, ultra durable, extruded metal ceiling baffle with versatile installation, easy plenum access and virtually unlimited finishing options.

KEY FEATURES

- Pre-assembled & easy to install
- Versatile attachment options for Unistrut®, 15/16" HD Grid and cable-suspended applications
- High strength, ultra rigid, extruded profile
- Easy plenum access - attachment hardware allows baffles to slide for easy plenum access and adjustment during installation
- Unlimited finish options - custom colors, wood looks, & films
- Cleanable using CDC recommended and EPA-approved disinfectants for fog, spray & wipe

HOW IT WORKS



Standard sizes available made to order:

Metal Extruded

- Lengths - up to 12'
- Custom lengths up to 24'
- Profile Size - 1-3/8" x 3-3/8"
- Profile Size - 1-1/2" x 6"
- Profile Size - 2" x 6"




LINE:Form™ | TRADITIONAL EXTRUDED BAFFLE INTERIOR

LINE:Form Traditional Extruded Baffles offer clean linear styling in high strength, ultra rigid, extruded profile. Design without limits with longer lengths and superior fit and finish.

PHYSICAL DATA

-  **MATERIALS:**
Aluminum | Extruded
Thickness 0.08 - 0.125 (profile dependent).
-  **WEIGHT:**
Varies - 1.03 - 1.92 lbs./ln.ft.
-  **WARRANTY:**
One Year Limited.
-  **FIRE PERFORMANCE:**
ASTM E84, Class A. CAN/ULC - S102.
-  **SURFACE FINISH:**
Factory-applied polyester paint.
Available in Standard Colors,
Wood Look Powder Coat and Films.
Custom colors also available.

-  **SUSTAINABILITY:**
Supports LEED v5 categories including Embodied Carbon, Indoor Air Quality, Quality of Life- Acoustics, Materials Transparency and Circular Economy.



LINE:Form™ | TRADITIONAL EXTRUDED BAFFLE EXTERIOR


Designed specifically for exterior applications, our **Traditional Extruded Baffles** feature rigid construction paired with specially designed mounting hardware to ensure long-lasting stability, weather resistance, and architectural integrity—no matter the conditions.

Maxxit Exterior Finishes are engineered for performance and durability in even the toughest outdoor environments. These hard-surface, super-durable finishes deliver exceptional impact and abrasion resistance while maintaining rich color and gloss over time.

PHYSICAL DATA

-  **MATERIALS:**
Aluminum | Extruded
Thickness 0.08 - 0.125 (profile dependent).
-  **WEIGHT:**
Varies - 1.03 - 1.92 lbs./ln.ft.
-  **WARRANTY:**
One Year Limited.
-  **FIRE PERFORMANCE:**
ASTM E84, Class A. CAN/ULC - S102.

-  **SURFACE FINISH:**
Maxxit Exterior finishes perform beautifully in exterior and high abuse environments, meet or exceed AAMA 2604 performance requirements. Available in Standard Colors and Wood Look Powder Coated. Custom colors also available.

-  **SUSTAINABILITY:**
Supports LEED v5 categories including Embodied Carbon, Indoor Air Quality, Quality of Life- Acoustics, Materials Transparency and Circular Economy.

Co:LAB STUDIO

Need something unique? **More on page 157.**



LINE:Form™ | ELEVATIONS BAFFLE

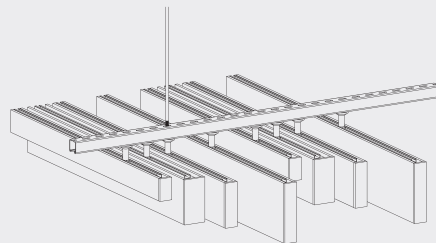
M

LINE:Form™ Elevations Baffle introduces bold texture and directional flow, creating visual rhythm in any environment. Its versatile design adapts effortlessly to spaces of all sizes—whether it's an intimate setting, a mid-sized meeting area, or a large open atrium—delivering a cohesive architectural statement that scales with your vision.

KEY FEATURES

- Lightweight, pre-assembled & easy to install
- Versatile attachment options for Unistrut®, 15/16" HD Grid and Cable hung applications
- Easy plenum access - attachment hardware allows baffles to slide for easy plenum access and adjustment during installation
- Available in acoustic perforated styles
- Unlimited finish options - custom colors, wood looks, films and felt
- Cleanable using CDC recommended and EPA-approved disinfectants for fog, spray & wipe

HOW IT WORKS



Standard sizes available made to order:

Metal Fabricated

Standard sizes - in addition to custom we also have quick ship standard products available made to order:

- Lengths - up to 12'
- Depths - up to 15"
- Widths - up to 24"

Felt Profile:

- Lengths - up to 8'
- Depths - up to 12"
- Width - 1.5", 2" (Minimum width = 1.5")



LINE:Form™ | ELEVATIONS BAFFLE METAL

Durable and versatile, our **metal finishes** offer a sleek, modern aesthetic with customizable colors, textures, and perforation options. Designed for longevity, they provide a high-end architectural look with exceptional durability.

PHYSICAL DATA



MATERIALS:
Aluminum | Fabricated.
Thickness 0.041" - 0.060" design dependent.



WEIGHT:
Varies from 0.67 - 1.10 lbs./In.ft.



WARRANTY:
One Year Limited.



FIRE PERFORMANCE:
ASTM E84, Class A. CAN/ULC - S102.2.



SURFACE FINISH:
Factory-applied polyester paint.
Available in Standard Colors, Color Matched and Wood Look.



ACOUSTICAL OPTIONS:
Perforated components can be supplied with optional acoustic infill to absorb sound — NRC values vary based on design and configuration.



SUSTAINABILITY:
Supports LEED v5 categories including Embodied Carbon, Indoor Air Quality, Quality of Life- Acoustics, Materials Transparency and Circular Economy.



LINE:Form™ | ELEVATIONS BAFFLE FELT PROFILE

Soft, textured, and acoustically effective, our **felt finishes** add warmth and depth to any space. Available in a wide range of colors, they provide both visual appeal and enhanced sound absorption for refined environments.

PHYSICAL DATA



MATERIALS:
(PET) polyester felt. Felt thickness - 9mm (3/8" nominal) and 12 mm (1/2" nominal), other thicknesses available upon request. Application - Felt is not approved for exterior application.



WEIGHT:
0.69 - 1.17 lbs./In.ft.



WARRANTY:
One Year Limited.



FIRE PERFORMANCE:
ASTM E84, Class A. CAN/ULC - S102.2.



VARIATION:
With all felt products color and texture may vary from order to order; adequate attic stock should be ordered.



ACOUSTICS:
Sound absorbing acoustic felt, NRC design dependent.



SUSTAINABILITY:
Supports LEED v5 categories including Embodied Carbon, Indoor Air Quality, Quality of Life- Acoustics and Materials Transparency.



LINE:Form™ | ANGLE BAFFLE

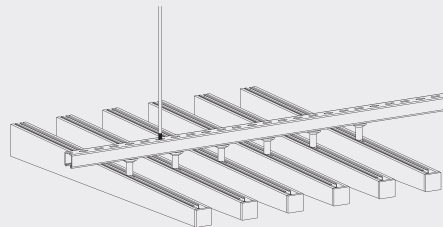
M

LINE:Form™ Angle Baffle brings subtle movement and refined linear aesthetics to the ceiling, offering a sleek, modern design solution. The angled profile adds gentle dimensionality without overwhelming the space—ideal for small to mid-sized interiors where clean lines and elegance are key. With distinctive rhythm and acoustic functionality, Angle adds both form and purpose to any architectural vision.

KEY FEATURES

- Lightweight, pre-assembled & easy to install
- Versatile attachment options for Unistrut,® 15/16" HD Grid and Cable hung applications
- Easy plenum access - attachment hardware allows baffles to slide for easy plenum access and adjustment during installation
- Available in acoustic perforated styles
- Unlimited finish options - custom colors, wood looks, films and felt
- Cleanable using CDC recommended and EPA-approved disinfectants for fog, spray & wipe

HOW IT WORKS



Standard sizes available made to order:

Metal

- Lengths - up to 12'
- Depths - up to 15"
- Widths - up to 24"

Felt Profile:

- Available made to order in 1/4" increments:
- Lengths - up to 8'
- Depths - up to 12"
- Width - 1.5", 2" (Minimum width = 1.5")



LINE:Form™ | ANGLE BAFFLE METAL

Durable and versatile, our **metal finishes** offer a sleek, modern aesthetic with customizable colors, textures, and perforation options. Designed for longevity, they provide a high-end architectural look with exceptional durability.

PHYSICAL DATA



MATERIALS:
Aluminum | Fabricated.
Thickness 0.041" - 0.060" design dependent.



WEIGHT:
Varies from 0.67 - 1.10 lbs./In.ft.



WARRANTY:
One Year Limited.



FIRE PERFORMANCE:
ASTM E84, Class A. CAN/ULC - S102.2.



SURFACE FINISH:
Factory-applied polyester paint.
Available in Standard Colors, Color Matched and Wood Look.



ACOUSTICAL OPTIONS:
Perforated components can be supplied with optional acoustic infill to absorb sound — NRC values vary based on design and configuration.



SUSTAINABILITY:
Supports LEED v5 categories including Embodied Carbon, Indoor Air Quality, Quality of Life- Acoustics, Materials Transparency and Circular Economy.



LINE:Form™ | ANGLE BAFFLE FELT PROFILE

Soft, textured, and acoustically effective, our **felt finishes** add warmth and depth to any space. Available in a wide range of colors, they provide both visual appeal and enhanced sound absorption for refined environments.

PHYSICAL DATA



MATERIALS:
(PET) polyester felt. Felt thickness - 9mm (3/8" nominal) and 12 mm (1/2" nominal), other thicknesses available upon request. Application - Felt is not approved for exterior application.



WEIGHT:
0.69 - 1.17 lbs./In.ft



WARRANTY:
One Year Limited.



FIRE PERFORMANCE:
ASTM E84, Class A. CAN/ULC - S102.2.



VARIATION:
With all felt products color and texture may vary from order to order; adequate attic stock should be ordered.



ACOUSTICS:
Sound absorbing acoustic felt, NRC design dependent.



SUSTAINABILITY:
Supports LEED v5 categories including Embodied Carbon, Indoor Air Quality, Quality of Life- Acoustics and Materials Transparency.

LINE:Form™ | WAVE BAFFLE



PRODUCT: **LINE:Form™ Custom**
Designed in the **Co:LAB** STUDIO - See page 157

LINE:Form™ Wave Baffle is a dynamic baffle system featuring flowing, sculpted forms that bring movement and dimension to ceilings. Designed for bold aesthetics, seamless integration, and versatile architectural applications.



PROJECT: **EQ Bank Tower**
PRODUCT: **LINE:Form™ Custom**
Designed in the **Co:LAB** STUDIO - See page 157

PROJECT: **Seneca College**
PRODUCT: **LINE:Form™ Wave Baffle**





LINE:Form™ | WAVE BAFFLE

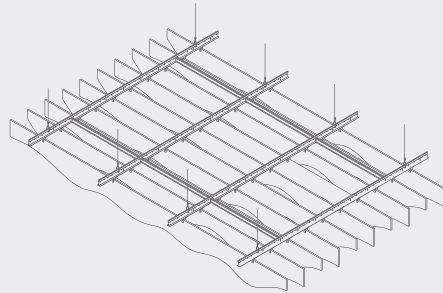
M

LINE:Form™ Wave Baffle offers limitless design potential, with the ability to be custom-cut into virtually any shape—from flowing, organic waves to striking, angular forms. This flexibility allows for the creation of bold, sculptural ceiling features that add movement, depth, and visual intrigue to any space. Whether you're aiming for a subtle ripple or a dramatic statement piece, **LINE:Form™ Wave** transforms ceilings into works of art.

KEY FEATURES

- Lightweight, pre-assembled & easy to install
- Versatile attachment options for Unistrut®, 15/16" HD Grid and Cable hung applications
- Easy plenum access - attachment hardware allows baffles to slide for easy plenum access and adjustment during installation
- Custom sizes & shapes - At Maxxit custom is what we do best. We will make any shape or size you can designs
- Cleanable using CDC recommended and EPA-approved disinfectants for fog, spray & wipe

HOW IT WORKS

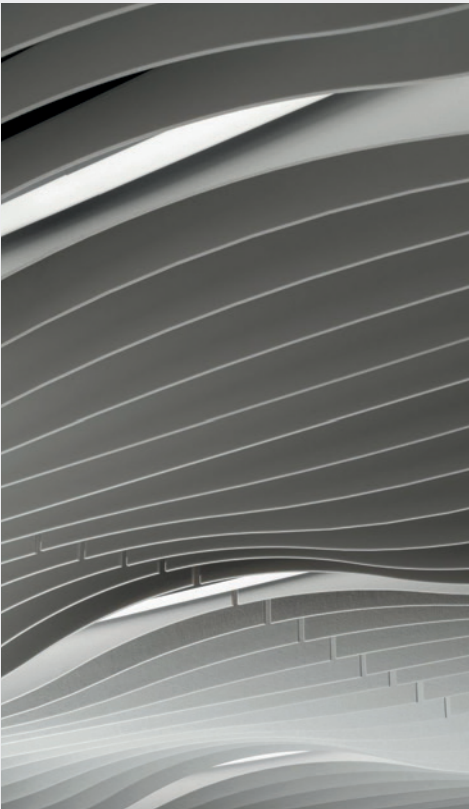


Standard sizes available made to order:

Available made to order in 1/4" increments:
 Lengths - up to 8'
 Depths - up to 48"
 Width - 9 mm and 12 mm



PROJECT: Kraft Heinz
 PRODUCT: LINE:Form™ Custom
 Designed in the Co:LAB STUDIO - See page 157



LINE:Form™ | WAVE BAFFLE
FELT

Soft, textured, and acoustically effective, our **felt finishes** add warmth and depth to any space. Available in a wide range of colors, they provide both visual appeal and enhanced sound absorption for refined environments.

PHYSICAL DATA



MATERIALS:
 (PET) polyester felt. Felt thickness - 9mm (3/8" nominal) and 12 mm (1/2" nominal), other thicknesses available upon request. Application - Felt is not approved for exterior application.



WEIGHT:
 0.20 - 0.33 lbs./in.ft.



WARRANTY:
 One Year Limited.



FIRE PERFORMANCE:
 ASTM E84, Class A. CAN/ULC - S102.2.



VARIATION:
 With all felt products color and texture may vary from order to order; adequate attic stock should be ordered.



ACOUSTICS:
 Sound absorbing acoustic felt, NRC design dependent.



SUSTAINABILITY:
 Supports LEED v5 categories including Embodied Carbon, Indoor Air Quality, Quality of Life- Acoustics and Materials Transparency.



Co:LAB STUDIO

LINE:Form™ | WAVE BAFFLE
METAL & WOOD

From natural wood to realistic wood-effect felt and metal, we craft custom solutions. Explore **Co:LAB STUDIO** on page 157 for bespoke wood finishes tailored to your vision.

LINE:Form™ FAST, EASY & SECURE INSTALLATION

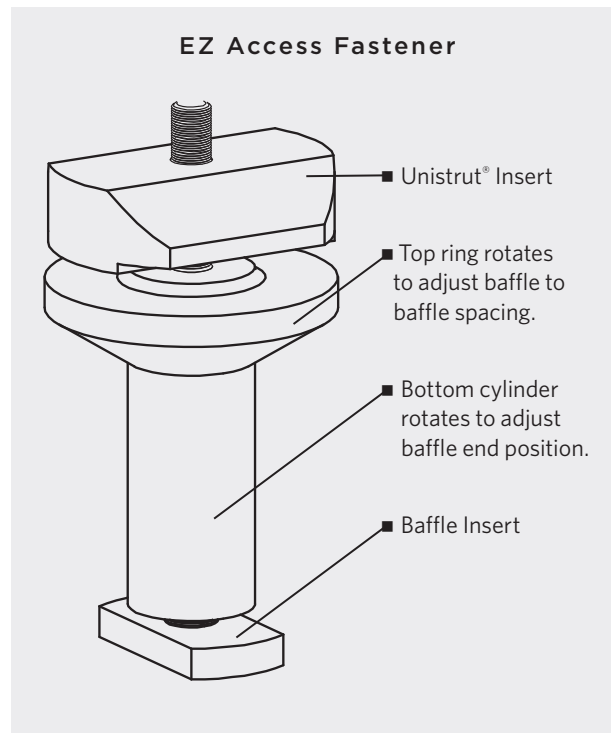
When it comes to suspending your ceiling and wall systems, Maxxit provides a full range of options, from well-known industry standards to innovative, custom-engineered solutions.

BAFFLE INSTALLATION MADE EASY

Only **Maxxit** offers EZ Access baffle fasteners for trouble-free installation and easy plenum access. With EZ Access proprietary dual action design, baffles can easily be moved in multiple directions to accommodate site conditions, for aesthetic adjustments or to provide plenum access for HVAC or electrical systems.

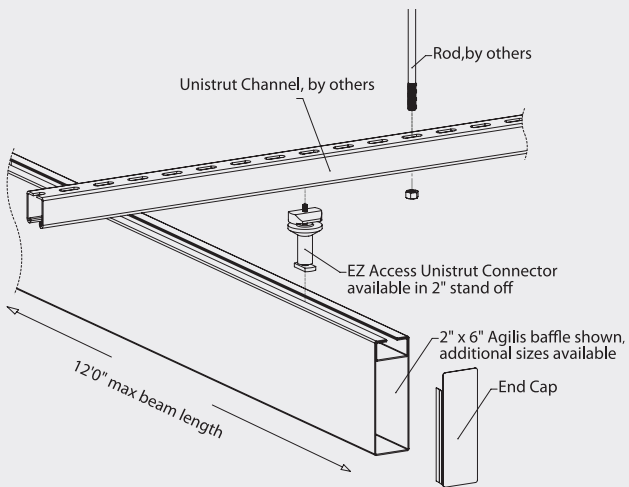
EZ ACCESS KEY FEATURES

- Rugged, weather-resistant, machined aluminum body
- Sleek, concealed appearance
- Hand tightened; no tools necessary
- Fully adjustable in four directions; no need to remove baffles and risk damage
- Available in satin black and satin silver colors.
Custom colors furnished upon request

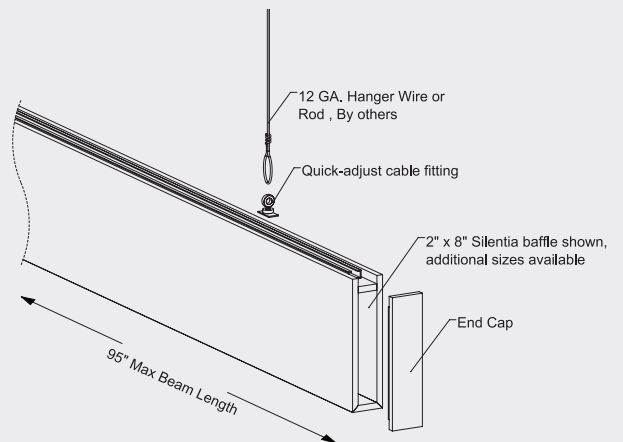
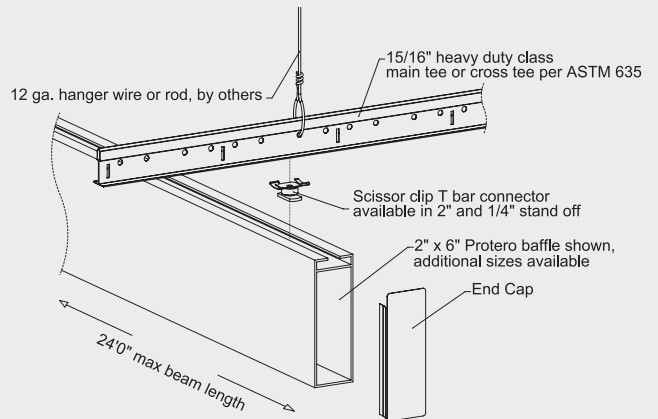




EZ Access is available on all Baffle designs



Additional fastening options available for T-bar and wire hung baffles



LINE:Form™ WALL FIN SYSTEM

LINE:Form™ Wall Fins System deliver exceptional versatility and streamlined installation, making it a smart solution for a wide range of design applications. Engineered for both horizontal and vertical orientations, these fins adapt effortlessly to various layouts, offering creative freedom for architects and designers. Whether used indoors to enhance visual rhythm or installed outdoors to add texture and dimension to building façades, Wall Fins bring durability, style, and adaptability to every project.



LINE:Form™ WALL FIN SYSTEM



55—56

LINE:Form™
WALL FIN
METAL



57—58

LINE:Form™
EXTERIOR
WALL FIN
METAL



PROJECT: Jilani Group
PRODUCT: LINE:Form™ Wall Fin

PROJECT: UBC Arts Student Centre
PRODUCT: LINE:Form™ Exterior Wall Fin





LINE:Form™ | WALL FIN

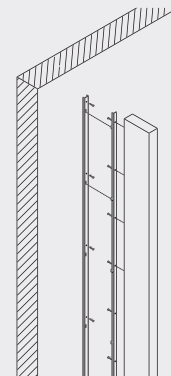
M

LINE:Form™ Wall Fins offer versatility and easy installation. Designed for both horizontal and vertical configurations, these fins can be specified in long, uninterrupted lengths to create sleek, continuous lines that elevate any space.

KEY FEATURES

- Lightweight, pre-assembled & easy to install
- Custom shapes & sizes available
- Extruded profiles can be used horizontally and vertically
- Unlimited finish options - custom colors, wood looks and films
- Cleanable using CDC recommended and EPA-approved disinfectants for fog, spray & wipe

HOW IT WORKS



Standard sizes available made to order:

- Lengths - up to 12'
- Custom lengths up to 24'
- Profile Size - 1-3/8" x 3-3/8"
- Profile Size - 1-1/2" x 6"
- Profile Size - 2" x 6"



PROJECT: BMO
PRODUCT: LINE:Form™ Wall Fin



LINE:Form™ | WALL FIN METAL EXTRUDED

Durable and versatile, our **metal finishes** offer a sleek, modern aesthetic with customizable colors, textures, and perforation options. Designed for longevity, they provide a high-end architectural look with exceptional durability.

PHYSICAL DATA



MATERIALS:
Aluminum | Extruded
Thickness 0.08 - 0.125 (profile dependent).



WEIGHT:
Varies - 1.03 - 1.92 lbs./ln.ft.



WARRANTY:
One Year Limited.



FIRE PERFORMANCE:
ASTM E84, Class A. CAN/ULC - S102.



SURFACE FINISH:
Factory-applied polyester paint.
Available in Standard Colors and Wood
Look Powder Coated. Custom colors
also available.



SUSTAINABILITY:
Supports LEED v5 categories including
Embodied Carbon, Indoor Air Quality,
Quality of Life- Acoustics, Materials
Transparency and Circular Economy.



Co:LAB STUDIO

LINE:Form™ | WALL FIN WOOD

In addition to metal and felt, we craft custom wood Wall Fins. Explore **Co:LAB STUDIO** on page 157 for bespoke wood Wall Fins tailored to your vision.



LINE:Form™ | EXTERIOR WALL FIN

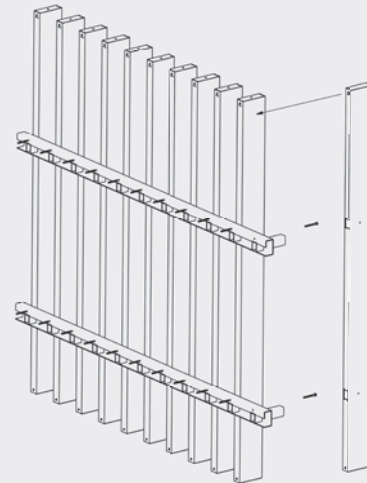
M

LINE:Form™ Exterior Wall Fins are engineered for exterior performance, offering a durable and visually striking solution for façades and outdoor architectural features. Outfitted with specially designed outdoor-rated hardware, exterior wall fins ensure secure, long-lasting installation in all weather conditions. With weather-resistant finishes and robust construction, they deliver both architectural impact and enduring performance.

KEY FEATURES

- Lightweight, pre-assembled & easy to install
- Custom shapes & sizes available
- Extruded profiles can be mitered, bent, used horizontally and vertically
- Unlimited finish options - custom colors and wood looks
- Cleanable using CDC recommended and EPA-approved disinfectants for fog, spray & wipe

HOW IT WORKS



Standard sizes available made to order:

- Lengths - up to 12'
- Profile Size - 1-3/8" x 3-3/8"
- Profile Size - 1-1/2" x 6"
- Profile Size - 2" x 6"
- Custom lengths up to 24'



PROJECT: Vermella at Garwood Station
PRODUCT: LINE:Form™ Exterior Wall Fin



LINE:Form™ | EXTERIOR WALL FIN METAL EXTRUDED

Durable and versatile, our **metal finishes** offer a sleek, modern aesthetic with customizable colors, textures, and perforation options. Designed for longevity, they provide a high-end architectural look with exceptional durability.

PHYSICAL DATA



MATERIALS:
Aluminum | Extruded
Thickness 0.08 - 0.125 (profile dependent).



WEIGHT:
Varies - 1.03 - 1.92 lbs./ln.ft.



WARRANTY:
One Year Limited.



FIRE PERFORMANCE:
ASTM E84, Class A. CAN/ULC - S102.



SURFACE FINISH:
Maxxit Exterior finishes perform beautifully in exterior and high abuse environments, meet or exceed AAMA 2604 performance requirements. Available in Standard Colors and Wood Look Powder Coated. Custom colors also available.



SUSTAINABILITY:
Supports LEED v5 categories including Embodied Carbon, Indoor Air Quality, Quality of Life- Acoustics, Materials Transparency and Circular Economy.



LINE:Form™ LINEAR PLANK SYSTEM

LINE:Form™ Linear Planks offer a sleek, linear aesthetic ideal for both commercial and institutional interiors. Available in a range of Maxxit metal finishes, linear plank systems combine durability, ease of maintenance, and acoustic performance - making them a smart, stylish solution for high-traffic environments.



LINE:Form™

LINEAR PLANK SYSTEM



61—62

LINE:Form™
LINEAR PLANK

METAL

PROJECT: Mirabel High School
PRODUCT: LINE:Form™ Custom
Designed in the Co:LAB STUDIO - See page 157





LINE:Form™ | LINEAR PLANK

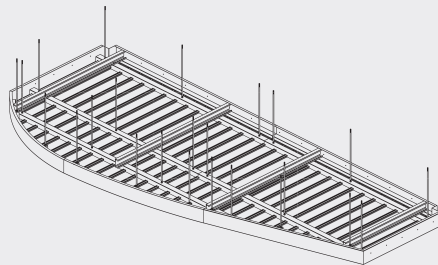
M

LINE:Form™ Linear Planks offer a versatile, lightweight, and easy-to-install fabricated metal plank system with seamless attachment options, limitless finishes, and effortless plenum access—combining durability, style, and cleanability.

KEY FEATURES

- Lightweight, pre-assembled & easy to install
- Easy installation and plenum access - planks snap in and out of carrier system
- Integrated lighting options available
- Unlimited finish options - custom colors, wood looks and films
- Cleanable using CDC recommended and EPA-approved disinfectants for fog, spray & wipe

HOW IT WORKS



Standard sizes - in addition to custom we also have quick ship standard products available made to order:

- Lengths - up to 12'
- Depths - up to 1"
- Widths - up to 8"



PRODUCT: LINE:Form™ Linear Plank



LINE:Form™ | LINEAR PLANK

METAL

Durable and versatile, our **metal finishes** offer a sleek, modern aesthetic with customizable colors, textures, and perforation options. Designed for longevity, they provide a high-end architectural look with exceptional durability.

PHYSICAL DATA



MATERIALS:
Aluminum | Fabricated.
Thickness 0.041" - 0.060" design dependent.



WEIGHT:
Varies from 0.5 - 1.0 lbs./sq.ft.



WARRANTY:
One Year Limited.



FIRE PERFORMANCE:
ASTM E84, Class A. CAN/ULC - S102.2.



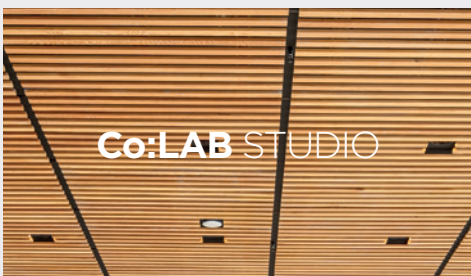
SURFACE FINISH:
Factory-applied polyester paint.
Available in Standard Colors, Color Matched and Wood Look.



ACOUSTICAL OPTIONS:
Perforated components can be supplied with optional acoustic infill to absorb sound — NRC values vary based on design and configuration.



SUSTAINABILITY:
Supports LEED v5 categories including Embodied Carbon, Indoor Air Quality, Quality of Life- Acoustics, Materials Transparency and Circular Economy.



LINE:Form™ | LINEAR PLANK

WOOD

In addition to metal and felt, we craft custom wood Linear Planks. Explore **Co:LAB STUDIO** on page 157 for bespoke Linear Planks tailored to your vision.



LINE:Form™ PARTITIONS SYSTEM

LINE:Form™ Partitions System provides a versatile and stylish solution for defining and separating open spaces. With customizable finishes and flexible installation options, it seamlessly integrates into diverse interior designs, enhancing both functionality and visual appeal in commercial environments.



LINE:Form™ PARTITIONS SYSTEM



65—68

LINE:Form™
PARTITIONS

METAL

PROJECT: 400 Atlantic
PRODUCT: LINE:Form™ Partitions



MAXXIT



PROJECT: 55 Standish Court
PRODUCT: LINE:Form™ Custom
Designed in the Co:LAB STUDIO - See page 157

TABLES

LINE:Form™ | PARTITIONS



PROJECT: Northbridge Financial
PRODUCT: LINE:Form™ Partitions

LINE:Form™ Partitions offer versatile, stylish solutions to define spaces with customizable finishes and flexible installation options, enhancing both functionality and design in any environment.



PROJECT: Huawei Canada
PRODUCT: LINE:Form™ Partitions

PROJECT: E A Games
PRODUCT: LINE:Form™ Partitions





LINE:Form™ | PARTITIONS

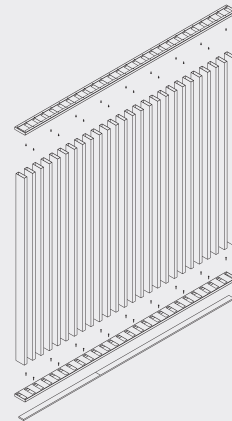
M

LINE:Form™ Partitions offer a fast, economical and aesthetically pleasing solution for improving space utilization and occupant comfort.

KEY FEATURES

- Lightweight, pre-assembled & easy to install
- Custom shapes & sizes available
- Extruded profiles can be used horizontally and vertically
- Unlimited finish options - custom colors, wood looks and films
- Cleanable using CDC recommended and EPA-approved disinfectants for fog, spray & wipe

HOW IT WORKS



Standard sizes available made to order:

- Lengths - up to 12'
- Profile Size - 1-3/8" x 3-3/8"
- Profile Size - 1-1/2" x 6"
- Profile Size - 2" x 6"
- Custom lengths up to 24'



PROJECT: Confidential Technology Firm
PRODUCT: LINE:Form™ Partitions



LINE:Form™ | PARTITIONS METAL EXTRUDED

Durable and versatile, our **metal finishes** offer a sleek, modern aesthetic with customizable colors, textures, and perforation options. Designed for longevity, they provide a high-end architectural look with exceptional durability.

PHYSICAL DATA



MATERIALS:
Aluminum | Extruded
Thickness 0.08 - 0.125 (profile dependent).



WEIGHT:
Varies - 1.03 - 1.92 lbs./ln.ft.



WARRANTY:
One Year Limited.



FIRE PERFORMANCE:
ASTM E84, Class A. CAN/ULC - S102.



SURFACE FINISH:
Factory-applied polyester paint.
Available in Standard Colors and
Wood Look Powder Coated. Custom
colors also available.



SUSTAINABILITY:
Supports LEED v5 categories including
Embodied Carbon, Indoor Air Quality,
Quality of Life- Acoustics, Materials
Transparency and Circular Economy.



Co:LAB STUDIO

LINE:Form™ | PARTITIONS WOOD

Explore **Co:LAB STUDIO** on page 157
for bespoke wood finishes tailored to your vision.



PANEL:Form™

CEILING, WALL & PARTITION SYSTEMS

PANEL:Form™ is a curated collection of innovative architectural panel products from three distinct systems—Ceilings, Walls & Partitions. Together, they offer customizable, high-performance solutions that elevate commercial spaces with bold design, refined finishes, and exceptional acoustic functionality.



PANEL:Form™

CEILING PANEL SYSTEMS

Versatile and refined, Ceiling Panel Systems deliver seamless ceiling solutions with customizable aesthetics and superior acoustics.

Page 71



PANEL:Form™

WALL & PARTITION SYSTEMS

Elegant and functional, Wall & Partitions Systems transform spaces with clean lines, rich finishes, and acoustic performance.

Page 99



PANEL:Form™

MOZAIX CEILING SYSTEMS

Mozaix Systems create striking geometric ceiling designs with customizable patterns, finishes, and acoustics.

Page 111



PANEL:Form™ CEILING PANEL SYSTEMS

PANEL:Form™ Ceiling Panel Systems offer versatile ceiling solutions, combining precision-engineered panels with customizable finishes, patterns, and textures. These panels are designed for seamless integration, providing superior acoustic performance and aesthetic appeal. Whether you need a sleek modern look or a warm, textured finish, Ceiling Panel Systems deliver functionality and style to elevate any space.

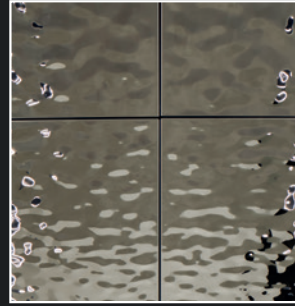
PANEL:Form™ CEILING PANEL SYSTEMS



73—78

**PANEL:Form™
GRAPHIC CEILING**

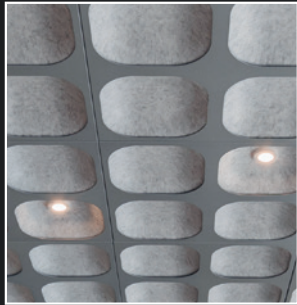
METAL



79—82

**PANEL:Form™
WATER RIPPLE**

METAL



83—86

**PANEL:Form™
CONCAVE**

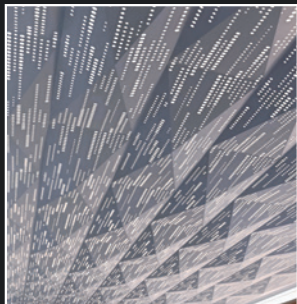
METAL & FELT



87—90

**PANEL:Form™
MESH**

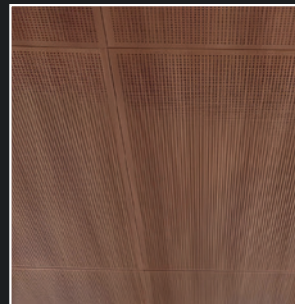
METAL



91—92

**PANEL:Form™
DIMENSIONAL**

METAL



93—94

**PANEL:Form™
TRADITIONAL**

METAL



95—96

**PANEL:Form™
SEGMENTED**

METAL



97—98

**PANEL:Form™
RADIUS**

METAL



PANEL:Form™ | GRAPHIC CEILING PANELS

PROJECT: Scotiabank Arena
PRODUCT: PANEL:Form™ Custom Backlit Panel
Designed in the Co:LAB STUDIO - See page 157

PANEL:Form™ GRAPHIC CEILING PANELS



75—76

**PANEL:Form™
BACKLIT PANEL**

METAL



77—78

**PANEL:Form™
DESIGN PERFORATED**

METAL



PROJECT: Scotiabank Arena
PRODUCT: PANEL:Form™ Custom Backlit Panel
Designed in the Co:LAB STUDIO - See page 157

PANEL:Form™ Graphic Ceiling Panels are available with integrated backlighting for a stunning visual effect or perforated with an acoustic backer to enhance occupant comfort. These panels bring beauty and performance together.

PROJECT: Cresa
PRODUCT: PANEL:Form™ Backlit Panel





PANEL:Form™ | BACKLIT PANEL

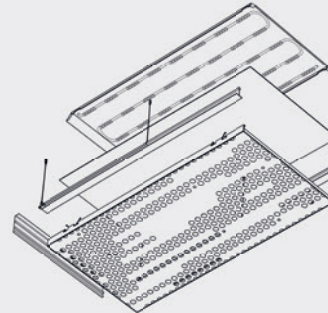
M

PANEL:Form™ Backlit Panel combines sleek design with dynamic illumination, offering versatile installation, customizable finishes, and integrated LED lighting to create visually striking and functional ceiling solutions.

KEY FEATURES

- Select from our standard perforated patterns or design custom perforations for a truly elevated look
- Attaches to both traditional 15/16" HD Grid and Maxxit's custom suspension system
- Backlighting options include White and RGBW LED. Linear lights can be integrated with backlit panels upon request
- Unlimited finish options - custom colors, wood looks and films
- Perforations run to the panel edge and are matched to adjacent panels for a more seamless appearance
- Torsion spring design allows for easy access to light panel. Panels can remain hinged to suspension to avoid damage

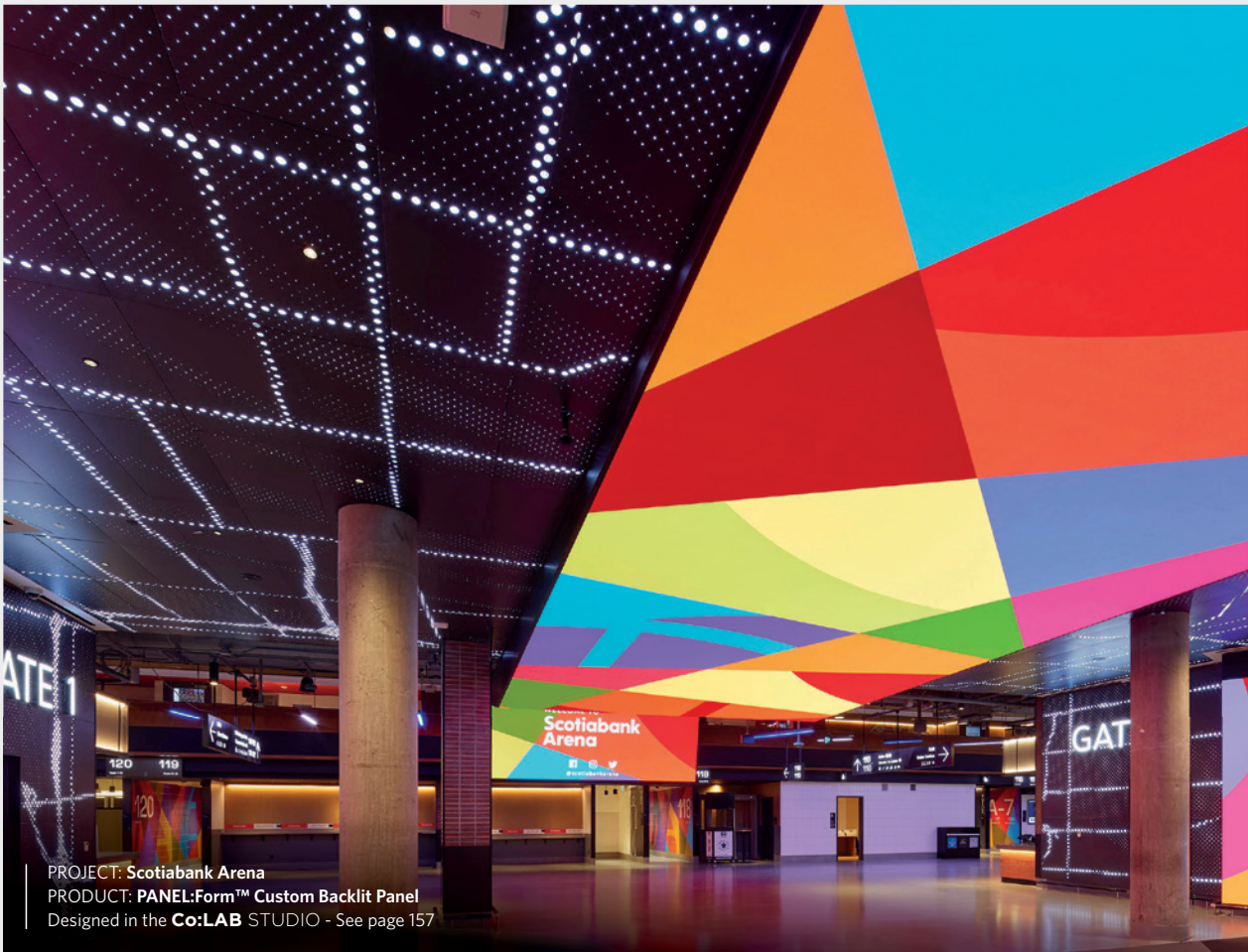
HOW IT WORKS



Backlighting options include White and RGBW LED.

Attaches to both traditional 15/16" HD Grid and Maxxit's custom suspension system.

Perforated surface is crafted using four unique tiles arranged strategically to minimize visual repetition, creating a seamless look throughout the space.



PROJECT: Scotiabank Arena
 PRODUCT: PANEL:Form™ Custom Backlit Panel
 Designed in the Co:LAB STUDIO - See page 157



PANEL:Form™ | BACKLIT PANEL METAL

Durable and versatile, our **metal finishes** offer a sleek, modern aesthetic with customizable colors, textures, and perforation options. Designed for longevity, they provide a high-end architectural look with exceptional durability.

PHYSICAL DATA



MATERIALS:
 Aluminum | Fabricated.
 Thickness 0.041" - 0.060" design dependent.



WEIGHT:
 Varies from 1.0-1.5 lbs./sq.ft.



WARRANTY:
 One Year Limited.



FIRE PERFORMANCE:
 ASTM E84, Class A. CAN/ULC - S102.2.



SURFACE FINISH:
 Factory-applied polyester paint.
 Available in Standard Colors, Color Matched and Wood Look Powder-Coated and laminated.



SUSTAINABILITY:
 Supports LEED v5 categories including Embodied Carbon, Indoor Air Quality, Quality of Life- Acoustics, Materials Transparency and Circular Economy.

*Physical Data is for the Panel only



PANEL:Form™ | DESIGN PERFORATED PANEL

M

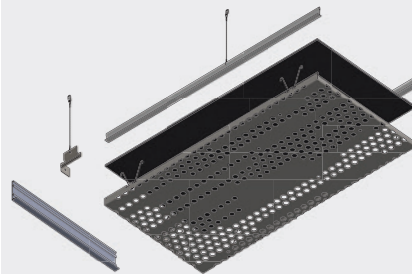
PANEL:Form™ Design Perforated Panels

are designed to improve acoustic quality and complement contemporary interiors. These panels combine form and function effortlessly. Perfect for sophisticated commercial settings or peaceful indoor spaces, they feature tailored perforation options, meticulous craftsmanship, and straightforward installation.

KEY FEATURES

- Lightweight, pre-assembled & easy to install
- Attaches to both traditional 15/16" HD Grid and Maxxit's custom suspension system
- Perforated panels can be paired with acoustic infill or architectural felt to minimize noise while adding depth and visual appeal
- Unlimited finish options - custom colors, wood looks, & films
- Cleanable using CDC recommended and EPA-approved disinfectants for fog, spray & wipe

HOW IT WORKS

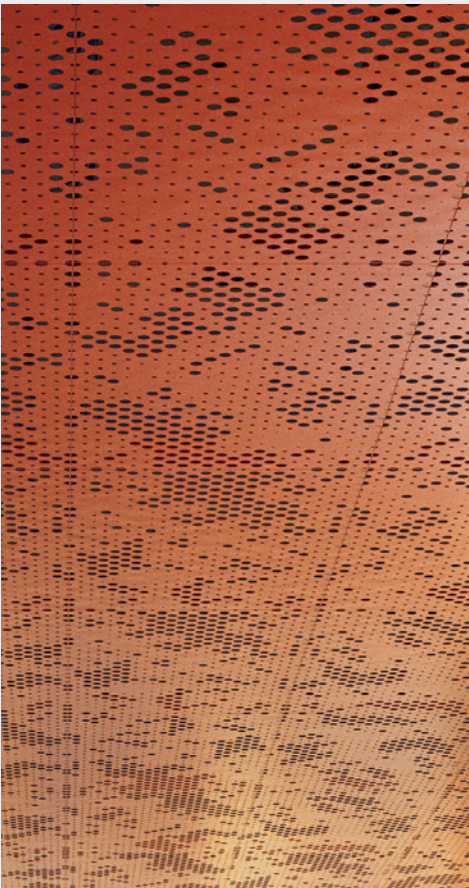


Perforated surface is crafted with four unique tiles, strategically arranged to minimize visual repetition and create a seamless look. Edge-to-edge perforations align across adjoining panels, subtly blending joints for a unified appearance. Design perforated patterns can be found in the Metal Perforated Finishes section of this catalog.

Attaches to both traditional 15/16" HD Grid and Maxxit's custom suspension system.



PRODUCT: PANEL:Form™ Design Perforated Panel



PANEL:Form™ | DESIGN PERFORATED PANEL METAL

Durable and versatile, our **metal finishes** offer a sleek, modern aesthetic with customizable colors, textures, and perforation options. Designed for longevity, they provide a high-end architectural look with exceptional durability.

PHYSICAL DATA



MATERIALS:
Aluminum | Fabricated.
Thickness 0.041" - 0.060" design dependent.



WEIGHT:
Varies from 0.67 - 1.10 lbs./in.ft.



WARRANTY:
One Year Limited.



FIRE PERFORMANCE:
ASTM E84, Class A. CAN/ULC - S102.2.



SURFACE FINISH:
Factory-applied polyester paint.
Available in Standard Colors, Color Matched and Wood Look.



ACOUSTICAL OPTIONS:
Perforated panels can be supplied with optional acoustic infill to absorb sound — NRC values vary based on design and configuration.



SUSTAINABILITY:
Supports LEED v5 categories including Embodied Carbon, Indoor Air Quality, Quality of Life- Acoustics, Materials Transparency and Circular Economy.

*Physical Data is for the Panel only



PANEL:Form™ | WATER RIPPLE
TEXTURED CEILING PANEL SYSTEMS



PANEL:Form™ | WATER RIPPLE PANEL

PROJECT: University of the Fraser Valley Mission Campus
PRODUCT: PANEL:Form™ Water Ripple Panel



PRODUCT: PANEL:Form™ Water Ripple Panel

PANEL:Form™ Water Ripple Panels blend striking design with practical performance, unlocking endless creative potential. Featuring distinctive textures and finishes, they bring dimensional beauty and a bold, modern touch to any interior.

PROJECT: University of the Fraser Valley Mission Campus
PRODUCT: PANEL:Form™ Water Ripple Panel



PROJECT: Tricentis
PRODUCT: PANEL:Form™ Water Ripple Panel



PANEL:Form™ | WATER RIPPLE PANEL

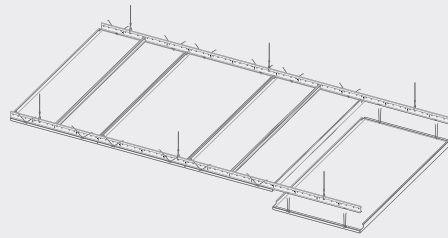
M

PANEL:Form™ Water Ripple Panel offers bold color and dramatic light reflectance for a one-of-a-kind interior or exterior design. Transform your space with a shimmering water ripple surface that evokes the fluidity of water for calming, soothing spaces.

KEY FEATURES

- Pre-assembled & easy to install
- Versatile attachment options for 15/16" HD grid include; lay-in and torsion spring designs
- Easy plenum access - Torsion spring design offers downward accessibility
- Colors: silver, champagne, copper, black & blue
- Cleanable using CDC recommended and EPA-approved disinfectants for fog, spray & wipe

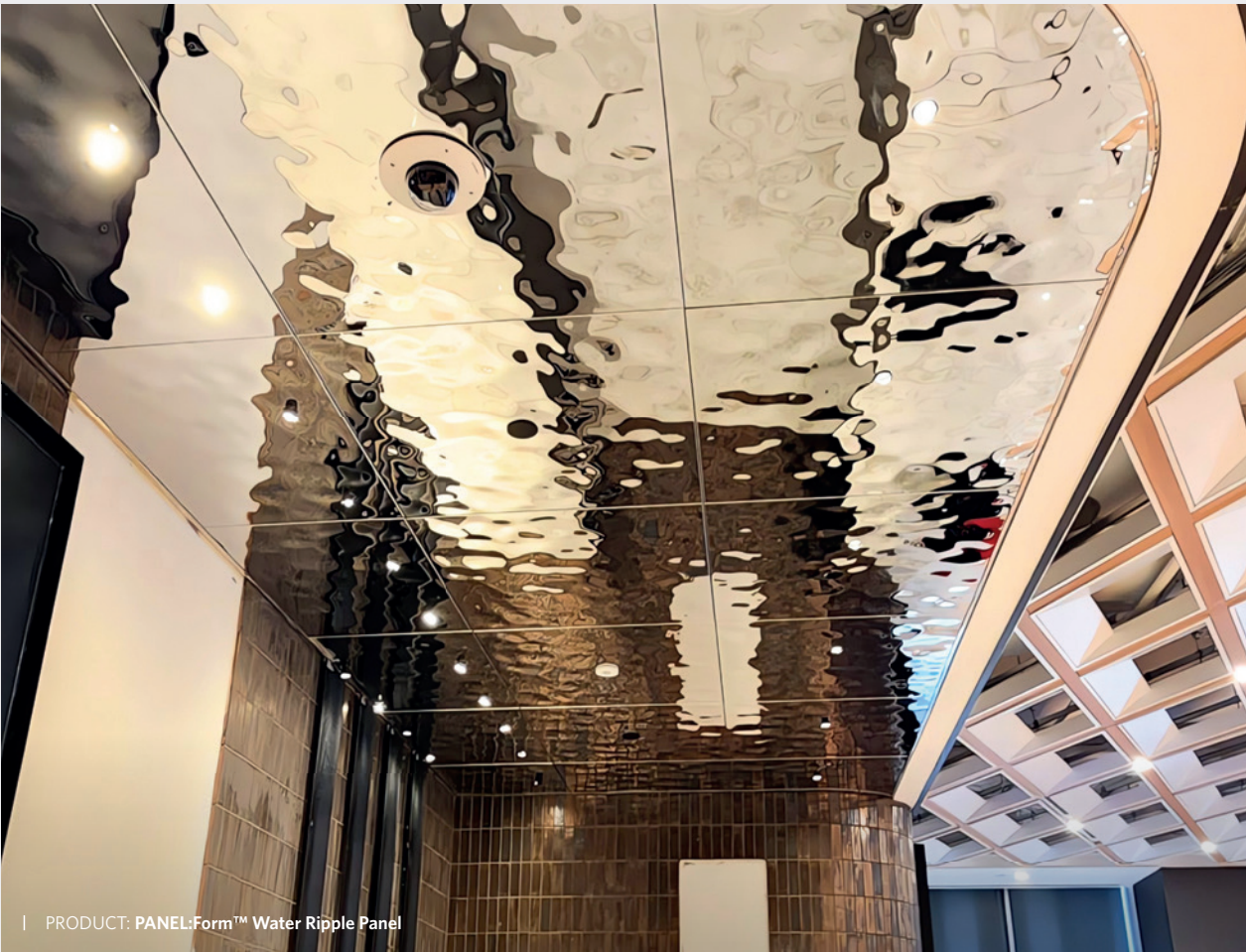
HOW IT WORKS



Standard options available made to order:

- 2'x2' panels
- 2'x4' panels
- 3'x3' panels

(custom panel sizes available)



| PRODUCT: PANEL:Form™ Water Ripple Panel



PANEL:Form™ | WATER RIPPLE PANEL METAL

Durable and versatile, our **metal finishes** offer a sleek, modern aesthetic with customizable colors, textures, and perforation options. Designed for longevity, they provide a high-end architectural look with exceptional durability.

PHYSICAL DATA



MATERIALS:
Stainless Steel 304.
Thickness: 0.6-3.0 mm design dependent.



WEIGHT:
Varies from 1.0-3.0 lbs./sq.ft.



WARRANTY:
One Year Limited.



SURFACE FINISH:
Superior acid & alkali resistance, with no bubbles and no pinholes. Available in 3 distinct textures and 5 colors.



SUSTAINABILITY:
Stainless steel is a durable, long-lasting material that is 100% recyclable. It contains a high percentage of recycled content and requires minimal maintenance.

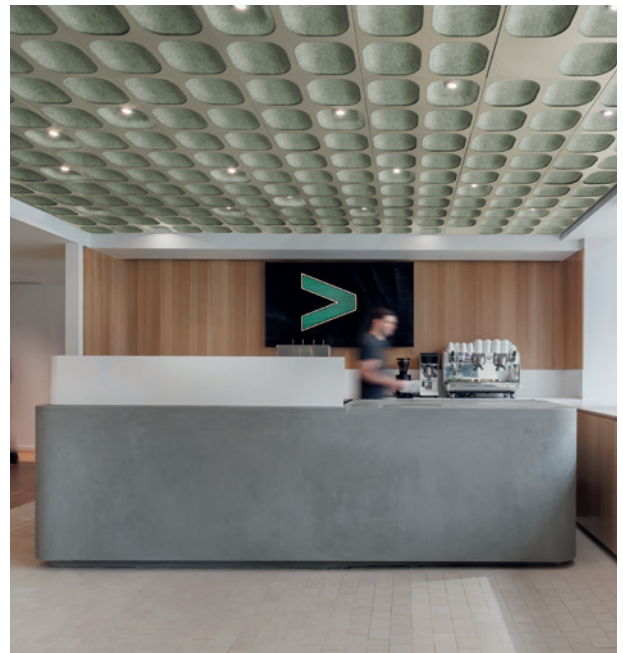
PANEL:Form™ | CONCAVE PANEL

PROJECT: Accenture
PRODUCT: PANEL:Form™ Concave Panel



PROJECT: **Accenture**
 PRODUCT: **PANEL:Form™ Concave Panel**

PANEL:Form™ Concave Ceiling Panels blend the crisp look of metal with the warmth of acoustic felt, delivering a refined, modern aesthetic while enhancing acoustic performance. Ideal for creating standout ceiling features in any interior.



PROJECT: **Accenture -Reimagined in Olive Gray felt and custom powdercoat**

PROJECT: **Accenture - Reimagined in contrasting Denim felt and American Natural woodgrain finish**



PANEL:Form™ | CONCAVE PANEL

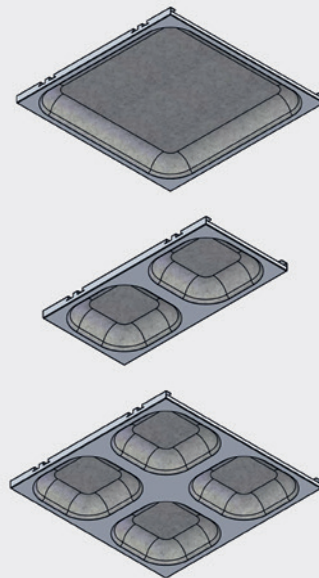
M

PANEL:Form™ Concave Panel blends metal and felt for a perfect harmony of acoustic performance and visual appeal. Its smooth, curved form, simple installation, and convenient plenum access make it a stylish and functional choice for modern ceiling design.

KEY FEATURES

- Torsion spring attachment to most standard T-bar grids (supplied by others). T-bar can be exposed or concealed
- Self locating mounting brackets make for easy installation
- Easy plenum access - torsion spring design allows for easy downward access panel removal
- Trim options include field-trimmable panels in either all aluminum or with a flat felt inlay. Angle ell brackets and push-down clips are included
- Integrates standard diffusers and sprinklers
- Cleanable using CDC recommended and EPA-approved disinfectants for fog, spray & wipe

HOW IT WORKS



Standard options available made to order:

- 2' x 2' panel (solo configuration)
- 2' x 2' panel (quad configuration)
- 2' x 1' panel (duo configuration)



PROJECT: Accenture -Reimagined in Raven felt with Forged Charcoal powdercoat



PANEL:Form™ | CONCAVE PANEL METAL & FELT

Our Mixed Finishes combine the sleek aesthetic of **metal** with the warmth and acoustic performance of **felt**. This versatile pairing offers customizable colors and panel options, delivering a refined, durable, and visually captivating solution for any space.

PHYSICAL DATA



MATERIALS:
 9 mm, 3/8" nominal (PET) acoustic felt,
 18 ga aluminum.



WEIGHT:
 0.09 lbs./sq.ft.



WARRANTY:
 One Year Limited.



FIRE PERFORMANCE:
 ASTM E84, Class A. CAN/ULC - S102.2.



VARIATION:
 With all felt products color and texture
 may vary from order to order; adequate
 attic stock should be ordered.



ACOUSTICS:
 Sound absorbing acoustic felt, NRC
 design dependent.



SUSTAINABILITY:
 Supports LEED v5 categories including
 Embodied Carbon, Indoor Air Quality,
 Quality of Life- Acoustics, Materials
 Transparency and Circular Economy.

PANEL:Form™ | MESH PANEL

PROJECT: 400 Atlantic
PRODUCT: PANEL:Form™ Mesh Panel



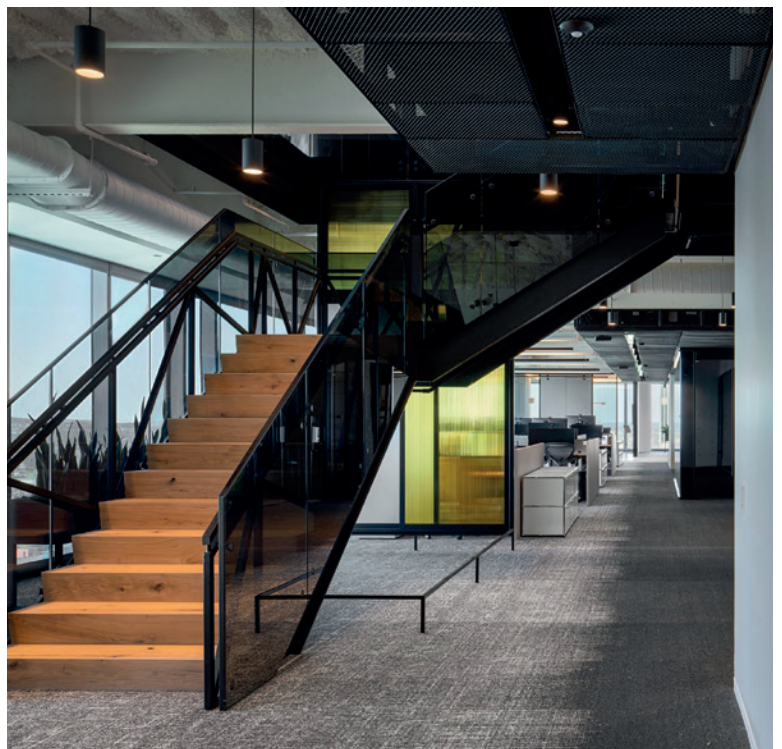
PROJECT: AB Nashville
PRODUCT: PANEL:Form™ Mesh Panel



PROJECT: 400 Atlantic
PRODUCT: PANEL:Form™ Mesh Panel

PANEL:Form™ Mesh panels bring a sleek, industrial aesthetic to ceiling designs with their distinctive metal mesh construction. Offering visual transparency and modern style, they provide a bold architectural statement for contemporary interiors.

PROJECT: AB Nashville
PRODUCT: PANEL:Form™ Mesh Panel





PANEL:Form™ | MESH PANEL

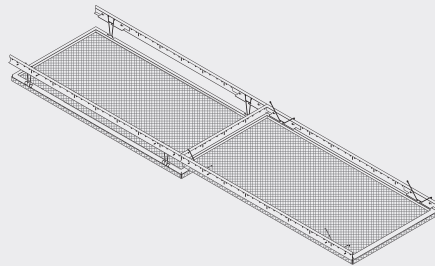
M

PANEL:Form™ Mesh Panel Offer a sleek industrial aesthetic that incorporates enhanced airflow, light transmission and expansive views of the plenum into your design.

KEY FEATURES

- Available in a wide variety of woven wire, welded wire and expanded metal designs
- Lightweight & easy to install
- Versatile attachment - Multiple panel styles and attachment options to suit a range of design preferences and functional needs
- Integrated lighting options available
- Available with acoustic backing
- Cleanable using CDC recommended and EPA-approved disinfectants for fog, spray & wipe

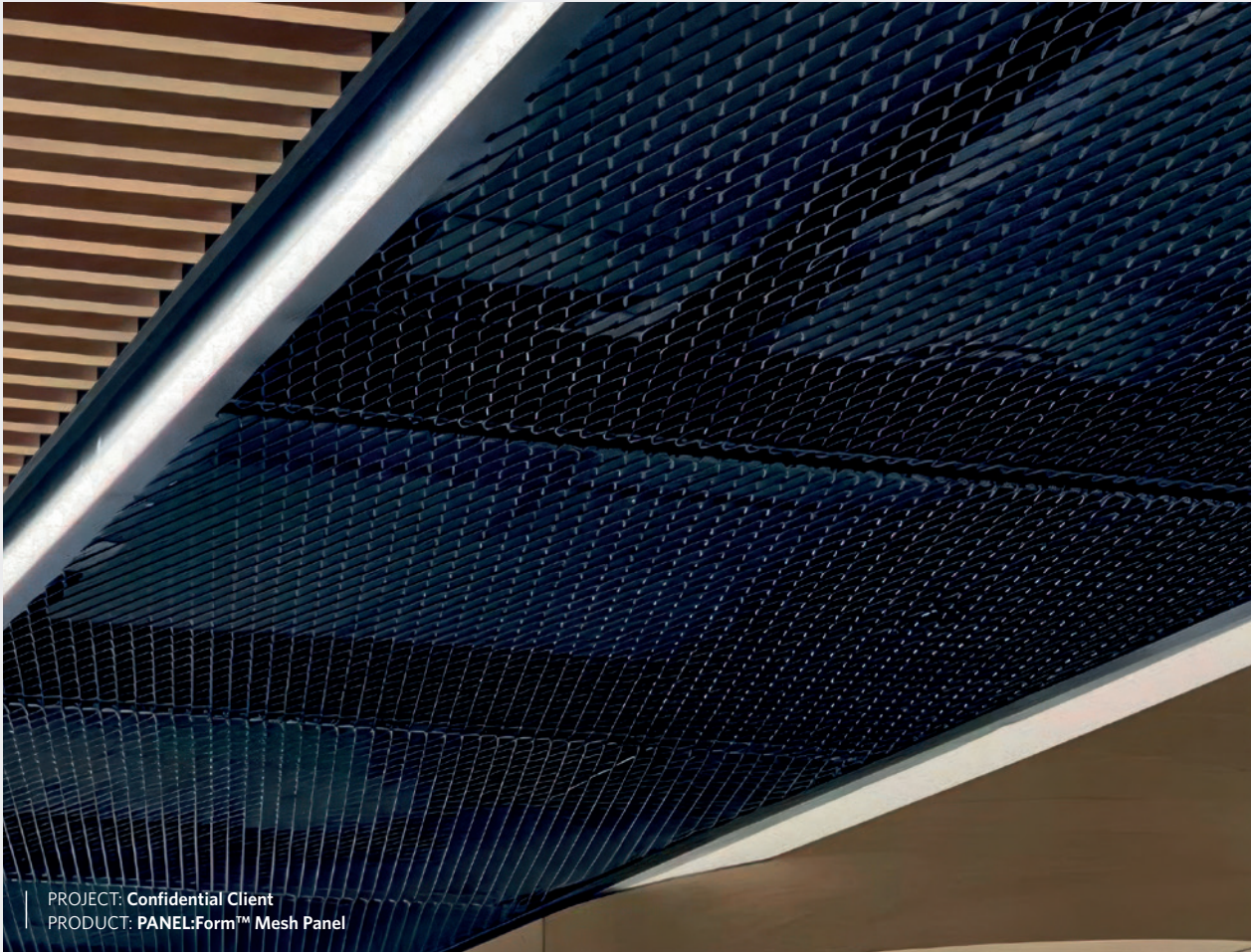
HOW IT WORKS



Standard options available made to order:

- 2' x 2' panel size
- 2' x 4' panel size
- 4' x 4' panel size

Available in a range of mesh styles and openness levels to suit diverse design needs.



PROJECT: Confidential Client
 PRODUCT: PANEL:Form™ Mesh Panel



PANEL:Form™ | MESH PANEL **METAL**

Durable and versatile, our **metal finishes** offer a sleek, modern aesthetic with customizable colors, patterns, and perforation options. Designed for longevity, they provide a high-end architectural look with exceptional durability.

PHYSICAL DATA



MATERIALS:
 Aluminum, Carbon Steel, Galvanized Steel & Stainless Steel.



WARRANTY:
 One Year Limited.



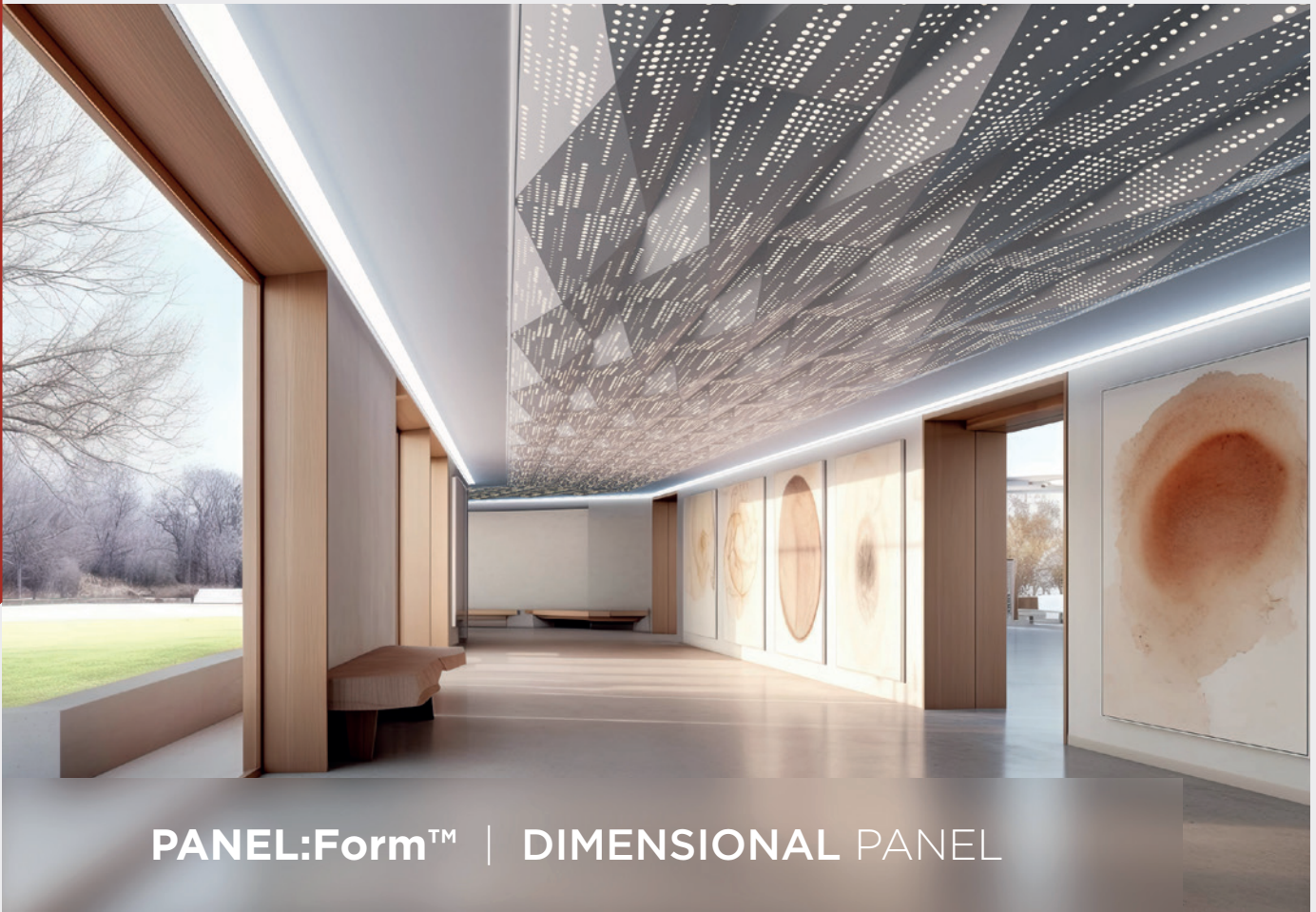
SURFACE FINISH:
 Products can be anodized, powder coated, galvanized or painted. Expanded Metal is supplied in a standard (raised) diamond pattern or a flattened variety. These finishes offer protection and create stunning visual effects.



ACOUSTICAL OPTIONS:
 Optional acoustic backing can be added for enhanced performance.



SUSTAINABILITY:
 Supports LEED v5 categories including Embodied Carbon, Indoor Air Quality, Quality of Life- Acoustics, Materials Transparency and Circular Economy.



PANEL:Form™ | DIMENSIONAL PANEL

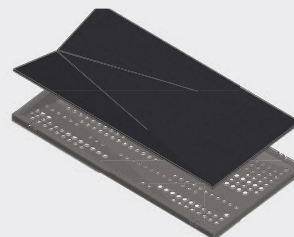
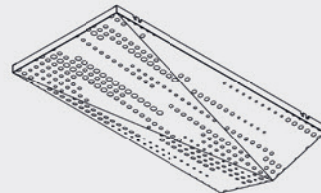
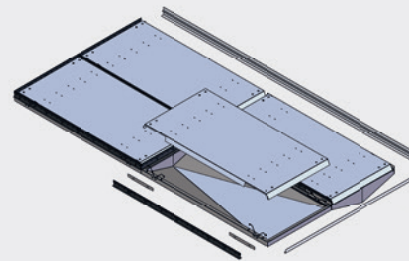
M

PANEL:Form™ Dimensional Panels showcase bold, faceted 3D designs, amplified with backlighting or graphic perforation with acoustic backing for ceilings that command attention and transform spaces.

KEY FEATURES

- Unlimited finish options - custom colors, wood looks, and films
- Perforations run to the panel edge and are matched to adjacent panels for a more seamless appearance
- Attaches to both traditional 15/16" HD Grid and Maxxit's custom suspension system (shown)
- Torsion spring design allows for easy access to light panel. Panels can remain hinged to suspension to avoid damage
- Backlighting options include White and RGBW LED
- Acoustical Options - Perforated panels can be fitted with acoustic infills or architectural felt to reduce noise and enhance visual interest

HOW IT WORKS





PANEL:Form™ | DIMENSIONAL PANEL METAL

Durable and versatile, our **metal finishes** offer a sleek, modern aesthetic with customizable colors, textures, and perforation options. Designed for longevity, they provide a high-end architectural look with exceptional durability.

PHYSICAL DATA



MATERIALS:
Aluminum | Fabricated.
Thickness 0.041" - 0.060" design dependent.



WEIGHT:
Varies from 1 - 1.5 lbs./sq.ft.



WARRANTY:
One Year Limited.



FIRE PERFORMANCE:
ASTM E84, Class A. CAN/ULC - S102.2.



SURFACE FINISH:
Factory-applied polyester paint.
Available in Standard Colors,
Color Matched and Wood Look.



ACOUSTICAL OPTIONS:
Perforated panels can include acoustical
infills or felt to reduce noise and add
visual interest.



SUSTAINABILITY:
Supports LEED v5 categories including
Embodied Carbon, Indoor Air Quality,
Quality of Life- Acoustics, Materials
Transparency and Circular Economy.



PANEL:Form™ | TRADITIONAL PANEL

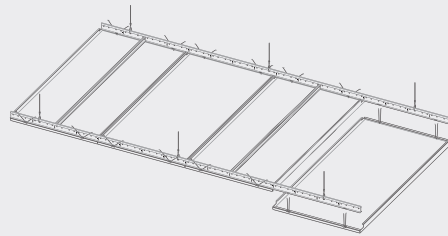
M

PANEL:Form™ Traditional Panels are highly durable and precision engineered for a smooth, uniform appearance and easy plenum access.

KEY FEATURES

- Lightweight, pre-assembled & easy to install
- Versatile attachment options; available in torsion spring, hook on and multiple lay-in design. Panels can be designed to work with Maxxit suspension systems or industry standard grid systems
- Integrated lighting options available
- Easy plenum access
- Unlimited finish options - custom colors, wood looks and films
- Cleanable using CDC recommended and EPA-approved disinfectants for fog, spray & wipe

HOW IT WORKS



Standard options available made to order:

- 2' x 2' panel
- 2' x 4' panel
- 3' x 3' panel



PROJECT: South32
 PRODUCT: PANEL:Form™ Traditional Panel

PANEL:Form™ | TRADITIONAL PANEL **METAL**

Durable and versatile, our **metal finishes** offer a sleek, modern aesthetic with customizable colors, textures, and perforation options. Designed for longevity, they provide a high-end architectural look with exceptional durability.

PHYSICAL DATA



MATERIALS:
 Aluminum | Fabricated.
 Thickness 0.041" - 0.060" design dependent.



WEIGHT:
 Varies from 1 - 1.5 lbs./sq.ft.



WARRANTY:
 One Year Limited.



FIRE PERFORMANCE:
 ASTM E84, Class A. CAN/ULC - S102.2.



SURFACE FINISH:
 Factory-applied polyester paint.
 Available in Standard Colors,
 Color Matched and Wood Look.



ACOUSTICAL OPTIONS:
 Perforated panels can be supplied with optional acoustic infill to absorb sound — NRC values vary based on design and configuration.



SUSTAINABILITY:
 Supports LEED v5 categories including Embodied Carbon, Indoor Air Quality, Quality of Life- Acoustics, Materials Transparency and Circular Economy.





PANEL:Form™ | SEGMENTED PANEL

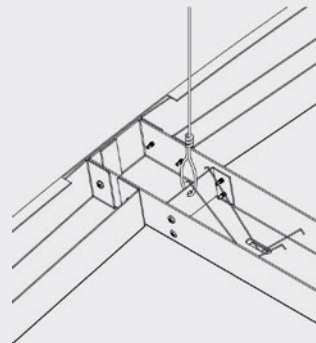
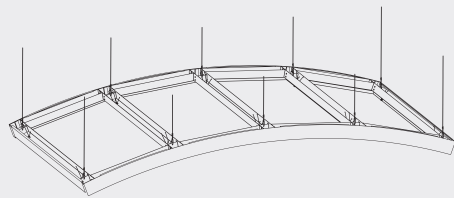
M

PANEL:Form™ Segmented Panel feature gentle curves and sleek forms—ideal for spacious rooms with high ceilings. Available in both concave and convex designs.

KEY FEATURES

- Lightweight, pre-assembled & easy to install
- Versatile suspensions options - panels can be made to work with traditional suspension systems or Maxxit's custom suspension system
- Easy plenum access - torsion spring design allows for easy downward access panel removal
- Unlimited finish options - custom colors, wood looks and films
- Cleanable using CDC recommended and EPA-approved disinfectants for fog, spray & wipe

HOW IT WORKS





PANEL:Form™ | SEGMENTED PANEL **METAL**

Durable and versatile, our **metal finishes** offer a sleek, modern aesthetic with customizable colors, textures, and perforation options. Designed for longevity, they provide a high-end architectural look with exceptional durability.

PHYSICAL DATA



MATERIALS:
 Aluminum | Fabricated.
 Thickness 0.041" - 0.060" design dependent.



WEIGHT:
 Varies from 1 - 1.5 lbs./sq.ft.



WARRANTY:
 One Year Limited.



FIRE PERFORMANCE:
 ASTM E84, Class A. CAN/ULC - S102.2.



SURFACE FINISH:
 Factory-applied polyester paint.
 Available in Standard Colors,
 Color Matched and Wood Look.



ACOUSTICAL OPTIONS:
 Perforated panels can be supplied with optional acoustic infill to absorb sound — NRC values vary based on design and configuration.



SUSTAINABILITY:
 Supports LEED v5 categories including Embodied Carbon, Indoor Air Quality, Quality of Life- Acoustics, Materials Transparency and Circular Economy.



PANEL:Form™ | RADIUS PANEL

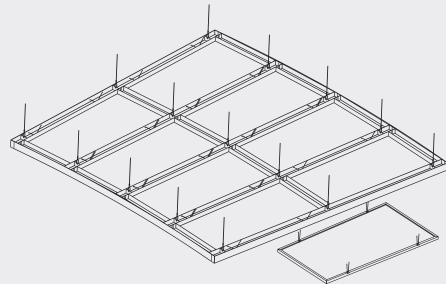
M

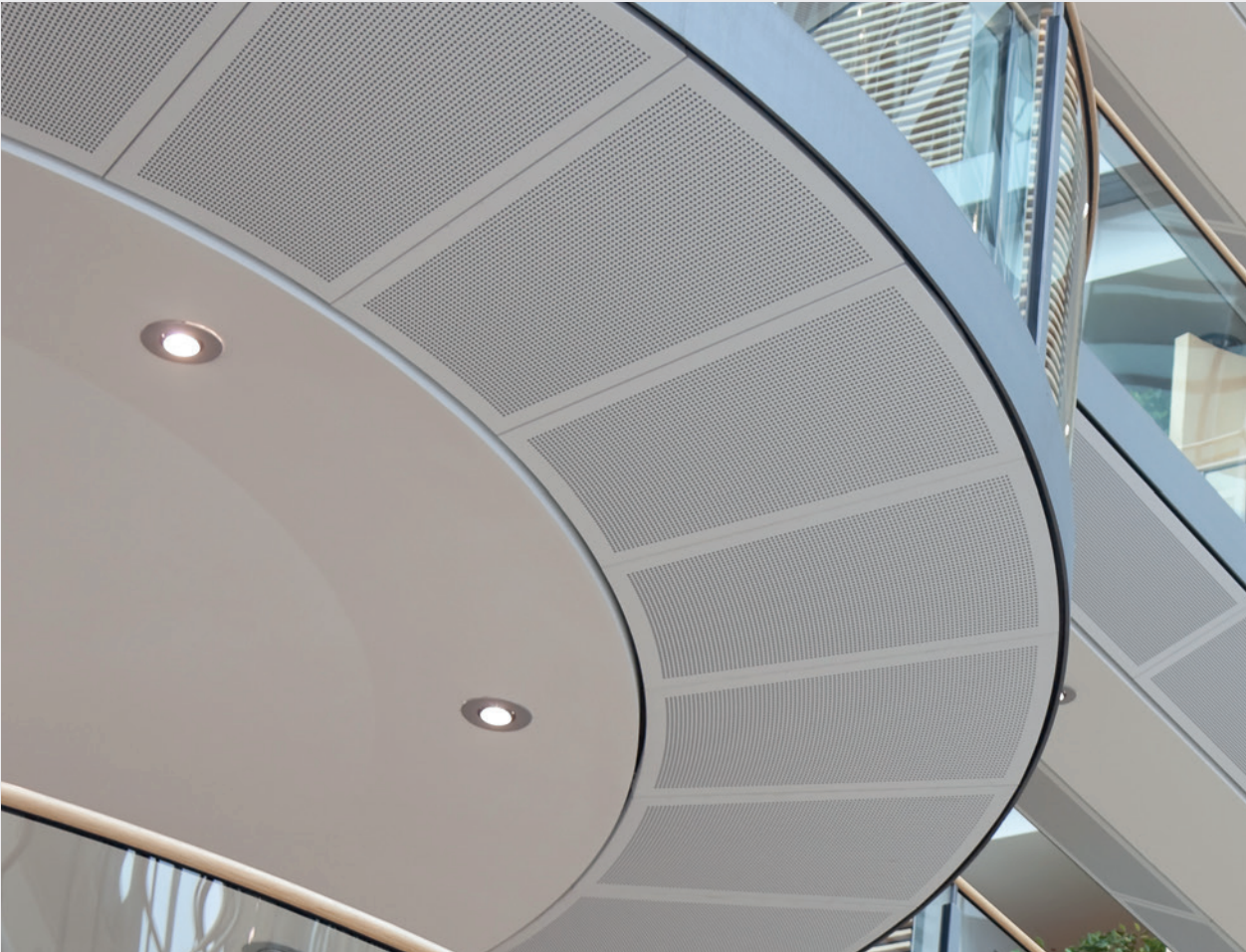
PANEL:Form™ Radius Panels smoothly follow the curves of circular spaces, delivering a precise and polished look. Their trapezoid shape perfectly complements radius designs, ensuring a seamless and visually striking ceiling layout.

KEY FEATURES

- Lightweight, pre-assembled & easy to install
- Versatile attachment options for Unistrut®, 15/16" HD Grid and cable-suspended applications
- Easy plenum access - torsion spring design allows for easy downward access panel removal. Panels remain hinged to suspension to avoid damage
- Unlimited finish options - custom colors, wood looks and films
- Cleanable using CDC recommended and EPA-approved disinfectants for fog, spray & wipe

HOW IT WORKS





PANEL:Form™ | RADIUS PANEL **METAL**

Durable and versatile, our **metal finishes** offer a sleek, modern aesthetic with customizable colors, textures, and perforation options. Designed for longevity, they provide a high-end architectural look with exceptional durability.

PHYSICAL DATA



MATERIALS:
 Aluminum | Fabricated.
 Thickness 0.041" - 0.060" design dependent.



WEIGHT:
 Varies from 1 - 1.5 lbs./sq.ft.



WARRANTY:
 One Year Limited.



FIRE PERFORMANCE:
 ASTM E84, Class A. CAN/ULC - S102.2.



SURFACE FINISH:
 Factory-applied polyester paint.
 Available in Standard Colors,
 Color Matched and Wood Look.



ACOUSTICAL OPTIONS:
 Perforated panels can be supplied with optional acoustic infill to absorb sound — NRC values vary based on design and configuration.



SUSTAINABILITY:
 Supports LEED v5 categories including Embodied Carbon, Indoor Air Quality, Quality of Life- Acoustics, Materials Transparency and Circular Economy.

GATE 1

PANEL:Form™ WALL & PARTITION SYSTEMS

PANEL:Form™ Wall & Partition Systems deliver architectural solutions that enhance environments with clean lines, refined finishes, and exceptional acoustic control. These adaptable panels seamlessly integrate into any design, transforming walls into bold, functional statements. With a wide range of materials, colors, and textures, Wall and Partitions Systems offer a perfect blend of aesthetics and performance for commercial, educational, and hospitality settings.

PROJECT: Scotiabank Arena
PRODUCT: PANEL:Form™ Custom Backlit Wall Panel
Designed in the Co:LAB STUDIO - See page 157

PANEL:Form™ WALL & PARTITION SYSTEMS



101—108

PANEL:Form™
WALL PANELS

METAL



109—110

PANEL:Form™
CANOPY PARTITIONS

METAL



PROJECT: Humber College
PRODUCT: PANEL:Form™ Custom Backlit Wall Panel
Designed in the Co:LAB STUDIO - See page 157



MAXXIT

OF THE CO-OPERATIVE MOVEMENT™
— ALBERT S.

PANEL:Form™ | WALL PANELS

PROJECT: Co-Operators
PRODUCT: PANEL:Form™ Custom Design Perforated Wall Panel
Designed in the Co:LAB STUDIO - See page 157

PANEL:Form™ WALL PANELS



103—104

**PANEL:Form™
BACKLIT**

METAL



105—106

**PANEL:Form™
DESIGN PERFORATED**

METAL



107—108

**PANEL:Form™
QUIET WALL**

FELT

PROJECT: Kraft Heinz
PRODUCT: PANEL:Form™ Quiet Wall Panel





PANEL:Form™ | BACKLIT WALL PANEL

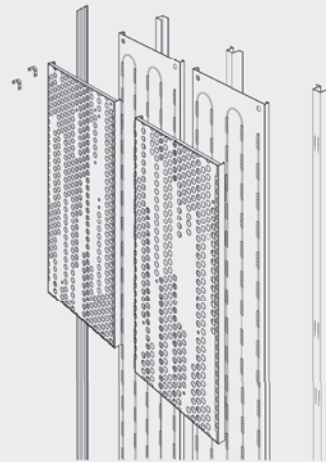
M

PANEL:Form™ Backlit Wall Panels combine precision-cut metal patterns with integrated lighting to create stunning visual effects and ambient glow. Whether used as a bold focal point or a subtle design accent, they add depth, texture, and modern sophistication to any interior.

KEY FEATURES

- Select from our standard perforated patterns or design custom perforations for a truly elevated look
- The wall attachment system includes a series of rails and hooks designed to securely hold the perforated panels in place
- Backlighting options include White and RGBW LED
- Unlimited finish options - custom colors, wood looks and films
- Perforations run to the panel edge and are matched to adjacent panels for a more seamless appearance

HOW IT WORKS



Backlighting options include White and RGBW LED.

Perforated surface is crafted using four unique tiles arranged strategically to minimize visual repetition, creating a seamless look throughout the space.



PROJECT: Scotiabank Arena
 PRODUCT: PANEL:Form™ Custom Backlit Wall Panel
 Designed in the Co:LAB STUDIO - See page 157



PANEL:Form™ | BACKLIT WALL PANEL **METAL**

Durable and versatile, our **metal finishes** offer a sleek, modern aesthetic with customizable colors, textures, and perforation options. Designed for longevity, they provide a high-end architectural look with exceptional durability.

PHYSICAL DATA



MATERIALS:
 Aluminum | Fabricated.
 Thickness 0.041" - 0.060" design dependent.



WEIGHT:
 Varies from 1 - 1.5 lbs./sq.ft.



WARRANTY:
 One Year Limited.



FIRE PERFORMANCE:
 ASTM E84, Class A. CAN/ULC - S102.2.



SURFACE FINISH:
 Factory-applied polyester paint.
 Available in Standard Colors,
 Color Matched and Wood Look.



SUSTAINABILITY:
 Supports LEED v5 categories including
 Embodied Carbon, Indoor Air Quality,
 Quality of Life- Acoustics, Materials
 Transparency and Circular Economy.

*Physical Data is for the Panel only



PANEL:Form™ | DESIGN PERFORATED WALL PANEL

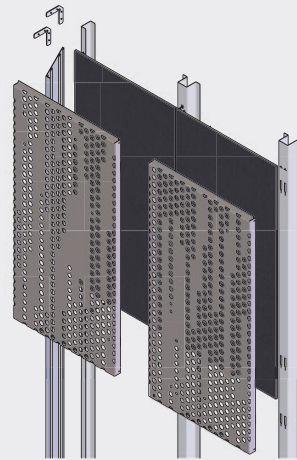
M

PANEL:Form™ Design Perforated Wall Panels present a range of precision-cut perforation patterns, paired with optional acoustic backing or architectural felt to reduce noise and add a bold pop of color. Perfect for commercial interiors, lobbies, and feature walls, these panels deliver style, function, and a distinctive architectural edge.

KEY FEATURES

- Select from our standard perforated patterns or design custom perforations for a truly elevated look
- The wall attachment system includes a series of rails and hooks designed to securely hold the perforated panels in place
- Perforated panels can be paired with acoustic infill or architectural felt to minimize noise while adding depth and visual appeal
- Unlimited finish options - custom colors, wood looks and films
- Perforations run to the panel edge and are matched to adjacent panels for a more seamless appearance

HOW IT WORKS



Perforated surface is crafted with four unique tiles, strategically arranged to minimize visual repetition and create a seamless look. Edge-to-edge perforations align across adjoining panels, subtly blending joints for a unified appearance. Design perforated patterns can be found in the Metal Perforated Finishes section of this catalog.



"AN ACORN THAT WILL GROW INTO ONE OF THE GREATEST OAK TREES OF THE CO-OPERATIVE MOVEMENT"
 - ALBERT S.

PROJECT: Co-Operators
 PRODUCT: PANEL:Form™ Custom Design Perforated Wall Panel
 Designed in the Co:LAB STUDIO - See page 157



PANEL:Form™ | DESIGN PERFORATED WALL PANEL METAL

Durable and versatile, our **metal finishes** offer a sleek, modern aesthetic with customizable colors, textures, and perforation options. Designed for longevity, they provide a high-end architectural look with exceptional durability.

PHYSICAL DATA



MATERIALS:
 Aluminum | Fabricated.
 Thickness 0.041" - 0.060" design dependent.



WEIGHT:
 Varies from 0.67 - 1.10 lbs./in.ft.



WARRANTY:
 One Year Limited.



FIRE PERFORMANCE:
 ASTM E84, Class A. CAN/ULC - S102.2.



SURFACE FINISH:
 Factory-applied polyester paint.
 Available in Standard Colors,
 Color Matched and Wood Look.



ACOUSTICAL OPTIONS:
 Perforated panels can include acoustic infills or felt to reduce noise and add visual interest.



SUSTAINABILITY:
 Supports LEED v5 categories including Embodied Carbon, Indoor Air Quality, Quality of Life- Acoustics, Materials Transparency and Circular Economy.



PANEL:Form™ | QUIET WALL PANEL

M

PANEL:Form™ Quiet Wall Panels deliver seamless acoustic solutions with style. Designed to absorb sound and reduce noise, these panels enhance comfort and aesthetics, creating calm, productive, and visually appealing environments.

KEY FEATURES

- Lightweight & easy to install
- Create soft, warm and tranquil spaces
- Versatile attachment options include: glue on adhesive and Z-clip
- Custom sizes & shapes - At Maxxit custom is what we do best. Custom sizes, shapes, cut outs and grooving available.
- Cleanable using CDC recommended and EPA-approved disinfectants for fog, spray & wipe

Quiet Wall designs

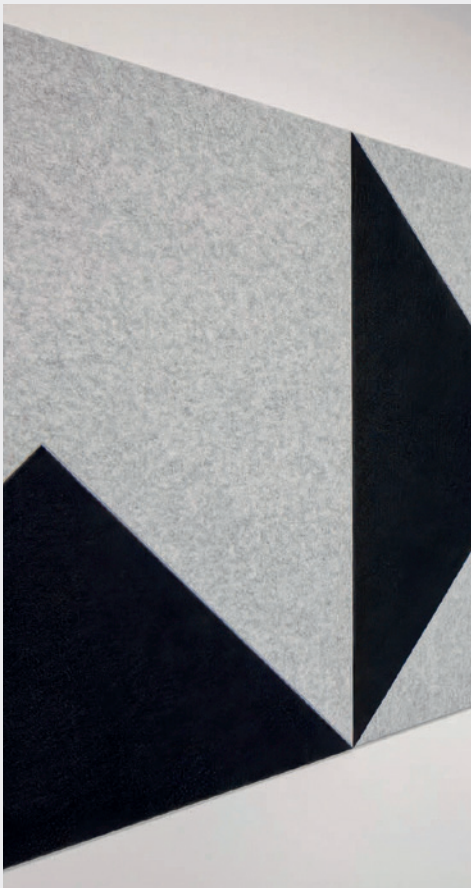


Standard sizes available made to order:

- Lengths - up to 8'
- Widths - up to 48"
- Depth - 9mm & 12mm



PROJECT: Metso
PRODUCT: PANEL:Form™ Quiet Wall Panel



PANEL:Form™ | QUIET WALL PANEL FELT

Soft, textured, and acoustically effective, our **felt finishes** add warmth and depth to any space. Available in a wide range of colors, they provide both visual appeal and enhanced sound absorption for refined environments.

PHYSICAL DATA



MATERIALS:
(PET) polyester felt. Felt thickness - 9mm (3/8" nominal) and 12 mm (1/2" nominal), other thicknesses available upon request. Application - Felt is not approved for exterior application.



WEIGHT:
0.20 - 0.33 lbs./ln.ft.



WARRANTY:
One Year Limited.



FIRE PERFORMANCE:
ASTM E84, Class A. CAN/ULC - S102.2.



VARIATION:
With all felt products color and texture may vary from order to order; adequate attic stock should be ordered.



ACOUSTICS:
Sound absorbing acoustic felt, NRC design dependent.



SUSTAINABILITY:
Supports LEED v5 categories including Embodied Carbon, Indoor Air Quality, Quality of Life- Acoustics and Materials Transparency.



PANEL:Form™ | CANOPY PARTITIONS

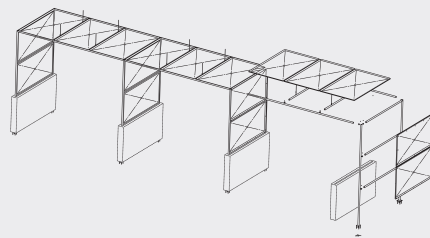


PANEL:Form™ Canopy Partitions establish boundaries and foster a sense of privacy, all while allowing natural light and air to flow freely.

KEY FEATURES

- Perforated overhead canopy design promotes a sense of privacy while allowing natural flow of air and light.
- Available in various configurations to fit a range of applications.
- Cable suspension to building structure will be required at certain size combinations.
- Lightweight & easy to install
- Cleanable using CDC recommended and EPA-approved disinfectants for fog, spray & wipe

HOW IT WORKS



Perforations patterns include Standard, Premium and Custom Perforation Custom sizes & shapes.



PRODUCT: PANEL:Form™ Canopy Partitions



PANEL:Form™ | CANOPY PARTITIONS METAL

Durable and versatile, our **metal finishes** offer a sleek, modern aesthetic with customizable colors, textures, and perforation options. Designed for longevity, they provide a high-end architectural look with exceptional durability.

PHYSICAL DATA



MATERIALS:
Aluminum | Fabricated.
Thickness 0.041" - 0.060" design dependent.



WEIGHT:
Varies from 0.67 - 1.10 lbs./in.ft.



WARRANTY:
One Year Limited.



FIRE PERFORMANCE:
ASTM E84, Class A. CAN/ULC - S102.2.



SURFACE FINISH:
Factory-applied polyester paint.
Available in Standard Colors and Color Matched.



SUSTAINABILITY:
Supports LEED v5 categories including Embodied Carbon, Indoor Air Quality, Quality of Life- Acoustics, Materials Transparency and Circular Economy.

PANEL:Form™ MOZAIX CEILING SYSTEMS

PANEL:Form™ Mozaix Ceiling Systems redefine ceiling design by offering a whole new world of creative possibilities. This modular system allows you to create striking patterns from geometric shapes. With customizable finishes and acoustic properties, MOZAIX Systems offer dynamic visual appeal while maintaining functionality—ideal for making bold architectural statements in any interior space.

PANEL:Form™ MOZAIX SYSTEMS



115—116

**PANEL:Form™
ARROW**

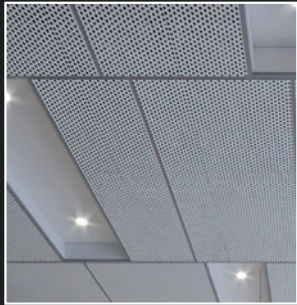
METAL



117—118

**PANEL:Form™
SHIFT**

METAL



119—120

**PANEL:Form™
STACKED**

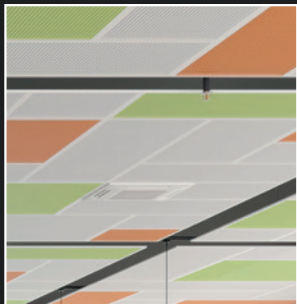
METAL



121—122

**PANEL:Form™
HERRINGBONE**

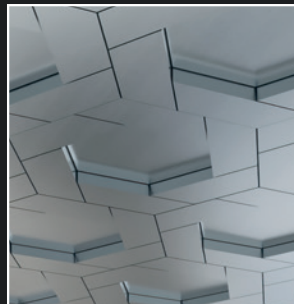
METAL



123—124

**PANEL:Form™
INTERLOCK**

METAL



125—126

**PANEL:Form™
HEX WEAVE**

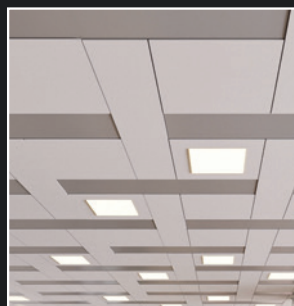
METAL



127—128

**PANEL:Form™
DOUBLE WEAVE**

METAL



129—130

**PANEL:Form™
WEAVE**

METAL



PRODUCT: PANEL:Form™ Mozaix Interlock

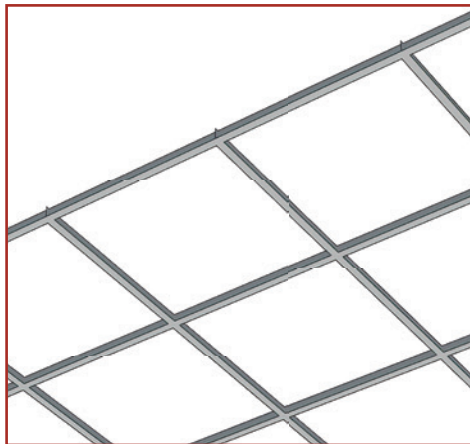
PANEL:Form™ | MOZAIX* SYSTEMS HOW IT WORKS

Mozaix utilizes industry standard T-bar grid, for an installation that's faster, more economical and eliminates waste.

Our proprietary suspension panel system eliminates limitations on decorative panel

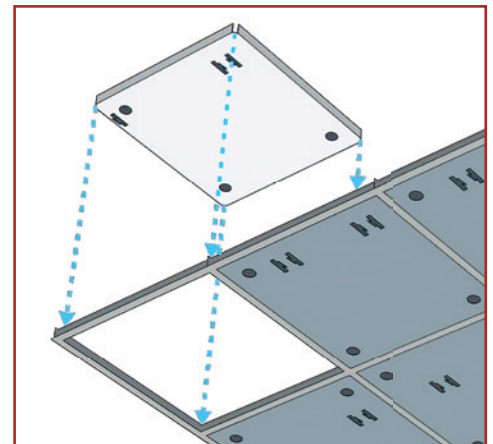
placement and delivers bold new ceiling designs with easy plenum access.

Mozaix ceilings are designed to integrate with common ceiling conditions for lighting, HVAC, fire suppression and acoustics.



Step 1

Utilize typical T-bar grid (new or existing).



Step 2

Insert your Mozaix suspension panels into the ceiling grid.

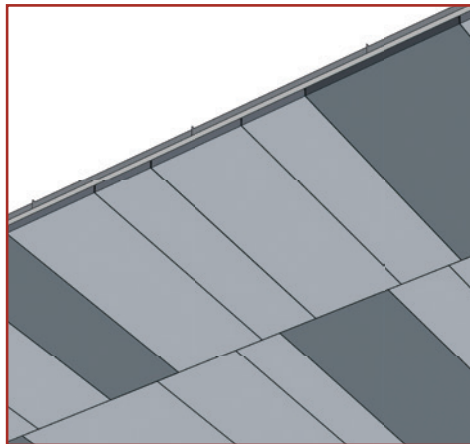
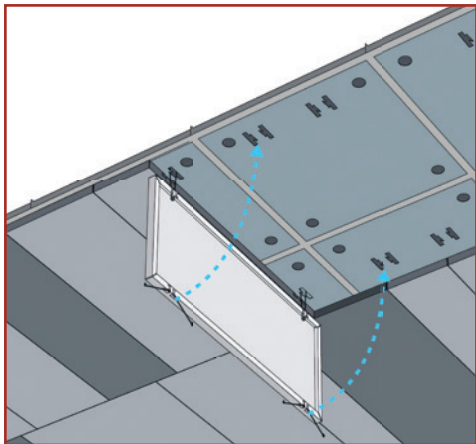


PRODUCT: PANEL:Form™ Mozaix Shift



PRODUCT: PANEL:Form™ Mozaix Arrow

PRODUCT: PANEL:Form™ Mozaix Hex Weave



Step 3

Mount the decorative panels with our easy to use, torsion springs.

MOZAIX

Enjoy the finished, result — perfectly accurate, the only limit is your imagination.



PANEL:Form™ | MOZAIX ARROW

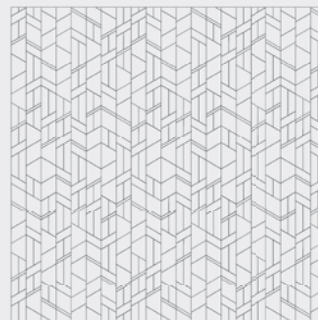
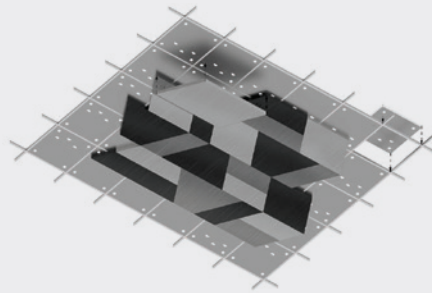
M

PANEL:Form™ Mozaix Arrow design adds visual interest by introducing a sense of movement and direction. This dynamic quality brings a feeling of energy and flow to the environment, making it an excellent choice for spaces where a sense of direction and purpose is desired.

KEY FEATURES

- Lightweight & easy to install
- Easy plenum access.
- Supported by traditional 15/16" HD Grid system
- Integrated lighting, HVAC, and sprinkler options available
- Unlimited finish options - standard and custom, solid and wood look colors
- Cleanable using CDC recommended and EPA-approved disinfectants for fog, spray & wipe

HOW IT WORKS



Standard panel sizes and additional details can be found in our data pages at www.maxxitgroup.com



PANEL:Form™ | MOZAIX ARROW **METAL**

Durable and versatile, our **metal finishes** offer a sleek, modern aesthetic with customizable colors, textures, and perforation options. Designed for longevity, they provide a high-end architectural look with exceptional durability.

PHYSICAL DATA



MATERIALS:
 Aluminum | Fabricated.
 Thickness 0.041" - 0.060" design dependent.
 Galvanized Steel | Fabricated.
 Thickness 0.041" - 0.060" design dependent.



WEIGHT:
 Varies from 1 - 1.5 lbs./sq.ft.



WARRANTY:
 One Year Limited.



FIRE PERFORMANCE:
 ASTM E84, Class A. CAN/ULC - S102.2.



SURFACE FINISH:
 Factory-applied polyester paint.
 Available in Standard Colors,
 Color Matched and Wood Look.



ACOUSTICAL OPTIONS:
 Perforated panels can be supplied with optional acoustic infill to absorb sound — NRC values vary based on design and configuration.



SUSTAINABILITY:
 Supports LEED v5 categories including Embodied Carbon, Indoor Air Quality, Quality of Life- Acoustics, Materials Transparency and Circular Economy.



PANEL:Form™ | MOZAIX SHIFT

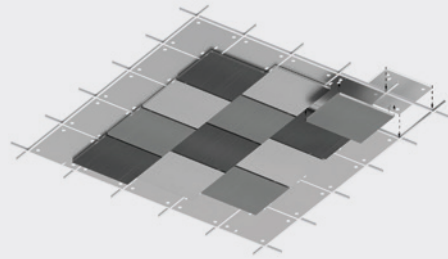
M

PANEL:Form™ Mozaix Shift design showcases ceiling panels arranged in a staggered or offset fashion, resulting in a visually dynamic and captivating effect. Perfect for adding a unique rhythm and style to any space while celebrating the intricacy of the in-between seams.

KEY FEATURES

- Lightweight & easy to install
- Easy plenum access.
- Supported by traditional 15/16" HD Grid system
- Integrated lighting, HVAC, and sprinkler options available
- Unlimited finish options - standard and custom, solid and wood look colors
- Cleanable using CDC recommended and EPA-approved disinfectants for fog, spray & wipe

HOW IT WORKS



Standard panel sizes and additional details can be found in our data pages at www.maxxitgroup.com



PANEL:Form™ | MOZAIX SHIFT METAL

Durable and versatile, our **metal finishes** offer a sleek, modern aesthetic with customizable colors, textures, and perforation options. Designed for longevity, they provide a high-end architectural look with exceptional durability.

PHYSICAL DATA



MATERIALS:
Aluminum | Fabricated.
Thickness 0.041" - 0.060" design dependent.
Galvanized Steel | Fabricated.
Thickness 0.041" - 0.060" design dependent.



WEIGHT:
Varies from 1 - 1.5 lbs./sq.ft.



WARRANTY:
One Year Limited.



FIRE PERFORMANCE:
ASTM E84, Class A. CAN/ULC - S102.2.



SURFACE FINISH:
Factory-applied polyester paint.
Available in Standard Colors,
Color Matched and Wood Look.



ACOUSTICAL OPTIONS:
Perforated panels can be supplied with optional acoustic infill to absorb sound — NRC values vary based on design and configuration.



SUSTAINABILITY:
Supports LEED v5 categories including Embodied Carbon, Indoor Air Quality, Quality of Life- Acoustics, Materials Transparency and Circular Economy.



PANEL:Form™ | MOZAIX STACKED

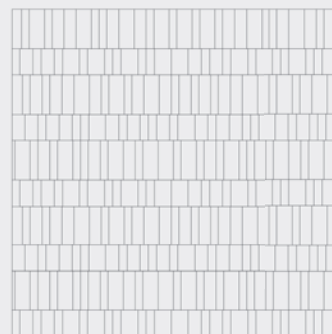
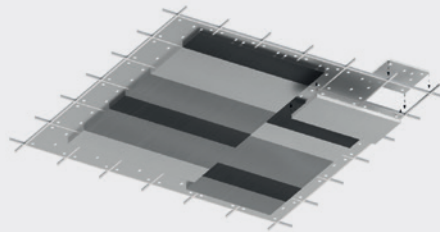
M

PANEL:Form™ Mozaix Stacked design diverges from the uniformity of traditional panel designs, introducing a sense of verticality and dimension to the surface. This arrangement creates a striking visual impact, accentuating architectural elements and infusing the space with a modern and dynamic aesthetic.

KEY FEATURES

- Lightweight & easy to install
- Easy plenum access.
- Supported by traditional 15/16" HD Grid system
- Integrated lighting, HVAC, and sprinkler options available
- Unlimited finish options - standard and custom, solid and wood look colors
- Cleanable using CDC recommended and EPA-approved disinfectants for fog, spray & wipe

HOW IT WORKS



Standard panel sizes and additional details can be found in our data pages at www.maxxitgroup.com



PANEL:Form™ | MOZAIX STACKED METAL

Durable and versatile, our **metal finishes** offer a sleek, modern aesthetic with customizable colors, textures, and perforation options. Designed for longevity, they provide a high-end architectural look with exceptional durability.

PHYSICAL DATA



MATERIALS:
Aluminum | Fabricated.
Thickness 0.041" - 0.060" design dependent.
Galvanized Steel | Fabricated.
Thickness 0.041" - 0.060" design dependent.



WEIGHT:
Varies from 1 - 1.5 lbs./sq.ft.



WARRANTY:
One Year Limited.



FIRE PERFORMANCE:
ASTM E84, Class A. CAN/ULC - S102.2.



SURFACE FINISH:
Factory-applied polyester paint.
Available in Standard Colors,
Color Matched and Wood Look.



ACOUSTICAL OPTIONS:
Perforated panels can be supplied with optional acoustic infill to absorb sound — NRC values vary based on design and configuration.



SUSTAINABILITY:
Supports LEED v5 categories including Embodied Carbon, Indoor Air Quality, Quality of Life- Acoustics, Materials Transparency and Circular Economy.



PANEL:Form™ | MOZAIX HERRINGBONE

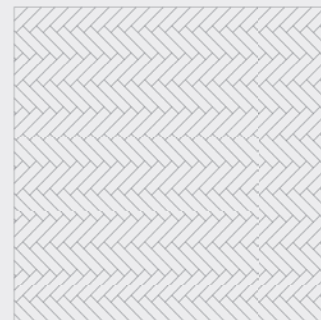
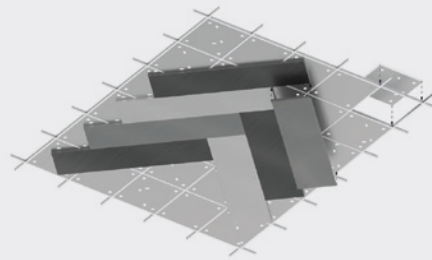
M

PANEL:Form™ Mozaix Herringbone design exudes a timeless elegance, providing both consistency and repetition to the ceiling surface. This classic pattern is perfect for creating a sense of order and refinement, making it a favorite choice for both traditional and contemporary designs.

KEY FEATURES

- Lightweight & easy to install
- Easy plenum access.
- Supported by traditional 15/16" HD Grid system
- Integrated lighting, HVAC, and sprinkler options available
- Unlimited finish options - standard and custom, solid and wood look colors
- Cleanable using CDC recommended and EPA-approved disinfectants for fog, spray & wipe

HOW IT WORKS



Standard panel sizes and additional details can be found in our data pages at www.maxxitgroup.com



PANEL:Form™ | MOZAIX HERRINGBONE METAL

Durable and versatile, our **metal finishes** offer a sleek, modern aesthetic with customizable colors, textures, and perforation options. Designed for longevity, they provide a high-end architectural look with exceptional durability.

PHYSICAL DATA



MATERIALS:
Aluminum | Fabricated.
Thickness 0.041" - 0.060" design dependent.
Galvanized Steel | Fabricated.
Thickness 0.041" - 0.060" design dependent.



WEIGHT:
Varies from 1 - 1.5 lbs./sq.ft.



WARRANTY:
One Year Limited.



FIRE PERFORMANCE:
ASTM E84, Class A. CAN/ULC - S102.2.



SURFACE FINISH:
Factory-applied polyester paint.
Available in Standard Colors,
Color Matched and Wood Look.



ACOUSTICAL OPTIONS:
Perforated panels can be supplied with optional acoustic infill to absorb sound — NRC values vary based on design and configuration.



SUSTAINABILITY:
Supports LEED v5 categories including Embodied Carbon, Indoor Air Quality, Quality of Life- Acoustics, Materials Transparency and Circular Economy.



PANEL:Form™ | MOZAIX INTERLOCK

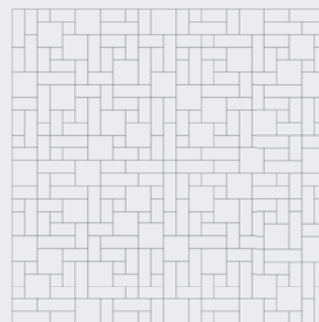
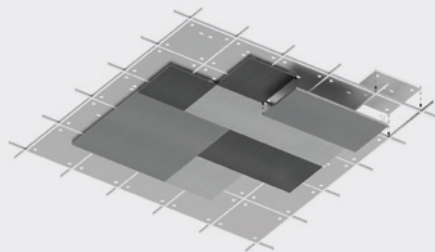
M

PANEL:Form™ Mozaix Interlock design introduces an element of unpredictability and complexity, offering a captivating twist on traditional design. Inspired by the renowned Versailles pattern, this intricate arrangement combines rectangular and square tiles of varying sizes. The result is a visually striking composition that appears both random and harmonious.

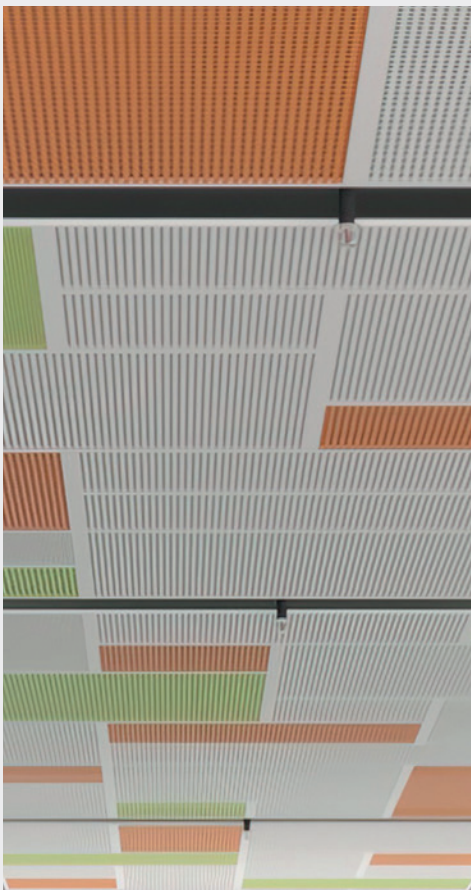
KEY FEATURES

- Lightweight & easy to install
- Easy plenum access.
- Supported by traditional 15/16" HD Grid system
- Integrated lighting, HVAC, and sprinkler options available
- Unlimited finish options - standard and custom, solid and wood look colors
- Cleanable using CDC recommended and EPA-approved disinfectants for fog, spray & wipe

HOW IT WORKS



Standard panel sizes and additional details can be found in our data pages at www.maxxitgroup.com



PANEL:Form™ | MOZAIX INTERLOCK METAL

Durable and versatile, our **metal finishes** offer a sleek, modern aesthetic with customizable colors, textures, and perforation options. Designed for longevity, they provide a high-end architectural look with exceptional durability.

PHYSICAL DATA



MATERIALS:
Aluminum | Fabricated.
Thickness 0.041" - 0.060" design dependent.
Galvanized Steel | Fabricated.
Thickness 0.041" - 0.060" design dependent.



WEIGHT:
Varies from 1 - 1.5 lbs./sq.ft.



WARRANTY:
One Year Limited.



FIRE PERFORMANCE:
ASTM E84, Class A. CAN/ULC - S102.2.



SURFACE FINISH:
Factory-applied polyester paint.
Available in Standard Colors,
Color Matched and Wood Look.



ACOUSTICAL OPTIONS:
Perforated panels can be supplied with optional acoustic infill to absorb sound — NRC values vary based on design and configuration.



SUSTAINABILITY:
Supports LEED v5 categories including Embodied Carbon, Indoor Air Quality, Quality of Life- Acoustics, Materials Transparency and Circular Economy.



PANEL:Form™ | MOZAIX HEX WEAVE

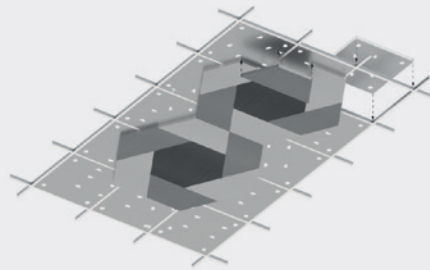
M

PANEL:Form™ Mozaix Hex Weave design provides a bold departure from expected geometry, opening doors to innovative and dramatic effects. Interlocking seamlessly, each hexagon weaves into its neighboring shapes, crafting a unified and dynamic pattern that enriches the space with intricacy and texture.

KEY FEATURES

- Lightweight & easy to install
- Easy plenum access.
- Supported by traditional 15/16" HD Grid system
- Integrated lighting, HVAC, and sprinkler options available
- Unlimited finish options - standard and custom, solid and wood look colors
- Cleanable using CDC recommended and EPA-approved disinfectants for fog, spray & wipe

HOW IT WORKS



Standard panel sizes and additional details can be found in our data pages at www.maxxitgroup.com



PANEL:Form™ | MOZAIX HEX WEAVE **METAL**

Durable and versatile, our **metal finishes** offer a sleek, modern aesthetic with customizable colors, textures, and perforation options. Designed for longevity, they provide a high-end architectural look with exceptional durability.

PHYSICAL DATA



MATERIALS:
 Aluminum | Fabricated.
 Thickness 0.041" - 0.060" design dependent.
 Galvanized Steel | Fabricated.
 Thickness 0.041" - 0.060" design dependent.



ACOUSTICAL OPTIONS:
 Perforated panels can be supplied with optional acoustic infill to absorb sound — NRC values vary based on design and configuration.



WEIGHT:
 Varies from 1 - 1.5 lbs./sq.ft.



SUSTAINABILITY:
 Supports LEED v5 categories including Embodied Carbon, Indoor Air Quality, Quality of Life- Acoustics, Materials Transparency and Circular Economy.



WARRANTY:
 One Year Limited.



FIRE PERFORMANCE:
 ASTM E84, Class A. CAN/ULC - S102.2.



SURFACE FINISH:
 Factory-applied polyester paint.
 Available in Standard Colors,
 Color Matched and Wood Look.



PANEL:Form™ | MOZAIX DOUBLE WEAVE

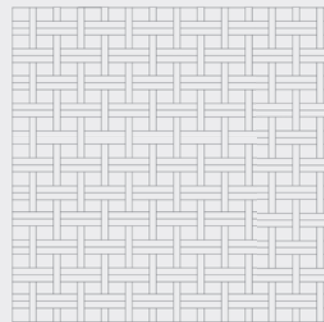
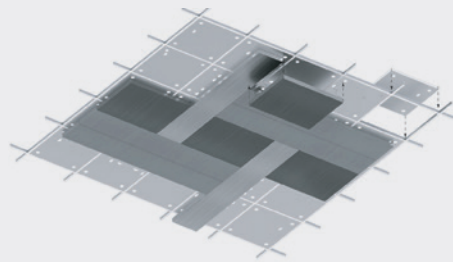
M

PANEL:Form™ Mozaix Double Weave design features an intricate pattern that intertwines layers of colors or textures, creating a dynamic visual effect reminiscent of woven fabric. This design can be tailored to suit various aesthetics, from contemporary and minimalist to traditional and rustic, making it a versatile choice for interior design projects.

KEY FEATURES

- Lightweight & easy to install
- Easy plenum access.
- Supported by traditional 15/16" HD Grid system
- Integrated lighting, HVAC, and sprinkler options available
- Unlimited finish options - standard and custom, solid and wood look colors
- Cleanable using CDC recommended and EPA-approved disinfectants for fog, spray & wipe

HOW IT WORKS



Standard panel sizes and additional details can be found in our data pages at www.maxxitgroup.com



PANEL:Form™ | MOZAIX DOUBLE WEAVE METAL

Durable and versatile, our **metal finishes** offer a sleek, modern aesthetic with customizable colors, textures, and perforation options. Designed for longevity, they provide a high-end architectural look with exceptional durability.

PHYSICAL DATA



MATERIALS:
Aluminum | Fabricated.
Thickness 0.041" - 0.060" design dependent.
Galvanized Steel | Fabricated.
Thickness 0.041" - 0.060" design dependent.



WEIGHT:
Varies from 1 - 1.5 lbs./sq.ft.



WARRANTY:
One Year Limited.



FIRE PERFORMANCE:
ASTM E84, Class A. CAN/ULC - S102.2.



SURFACE FINISH:
Factory-applied polyester paint.
Available in Standard Colors,
Color Matched and Wood Look.



ACOUSTICAL OPTIONS:
Perforated panels can be supplied with optional acoustic infill to absorb sound — NRC values vary based on design and configuration.



SUSTAINABILITY:
Supports LEED v5 categories including Embodied Carbon, Indoor Air Quality, Quality of Life- Acoustics, Materials Transparency and Circular Economy.



PANEL:Form™ | MOZAIX WEAVE

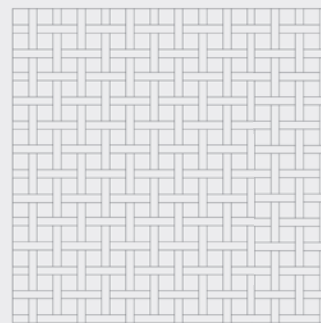
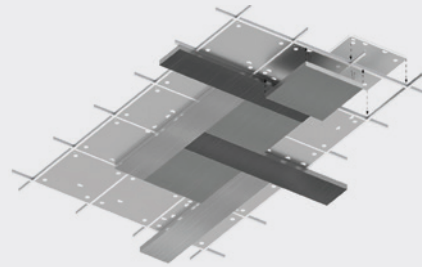
M

PANEL:Form™ Mozaix Weave design evokes an interlacing effect, suggesting a sense of interconnectedness. This soft, familiar aesthetic, when applied to the ceiling, introduces dimension and depth, offering a woven appearance that instills organic symmetry into any space.

KEY FEATURES

- Lightweight & easy to install
- Easy plenum access.
- Supported by traditional 15/16" HD Grid system
- Integrated lighting, HVAC, and sprinkler options available
- Unlimited finish options - standard and custom, solid and wood look colors
- Cleanable using CDC recommended and EPA-approved disinfectants for fog, spray & wipe

HOW IT WORKS



Standard panel sizes and additional details can be found in our data pages at www.maxxitgroup.com



PANEL:Form™ | MOZAIX WEAVE METAL

Durable and versatile, our **metal finishes** offer a sleek, modern aesthetic with customizable colors, textures, and perforation options. Designed for longevity, they provide a high-end architectural look with exceptional durability.

PHYSICAL DATA



MATERIALS:
Aluminum | Fabricated.
Thickness 0.041" - 0.060" design dependent.
Galvanized Steel | Fabricated.
Thickness 0.041" - 0.060" design dependent.



ACOUSTICAL OPTIONS:
Perforated panels can be supplied with optional acoustic infill to absorb sound — NRC values vary based on design and configuration.



WEIGHT:
Varies from 1 - 1.5 lbs./sq.ft.



SUSTAINABILITY:
Supports LEED v5 categories including Embodied Carbon, Indoor Air Quality, Quality of Life- Acoustics, Materials Transparency and Circular Economy.



WARRANTY:
One Year Limited.



FIRE PERFORMANCE:
ASTM E84, Class A. CAN/ULC - S102.2.



SURFACE FINISH:
Factory-applied polyester paint.
Available in Standard Colors,
Color Matched and Wood Look.



AERO:Form™ | FLOATING CEILING
PENDANTS, CLOUDS & OPEN CELL

PROJECT: 400 Atlantic
PRODUCT: AERO:Form™ Parallel Open Cell

MAXXIT

AERO:Form™ FLOATING CEILING SYSTEMS

AERO:Form™ redefines ceiling design with sleek, versatile solutions that elevate interior spaces. Available in Pendants, Clouds, and Open Cell configurations, these adaptable systems combine modern aesthetics with acoustic performance and effortless integration—finished with customizable options to match any design vision.

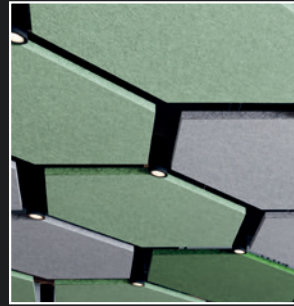
AERO:Form™ FLOATING CEILING SYSTEMS



133—134

AERO:Form™ PENDANTS

FELT



135—136

AERO:Form™ CLOUDS

FELT



137—142

AERO:Form™ CUBE OPEN CELL

METAL
FELT



143—146

AERO:Form™ PARALLEL OPEN CELL

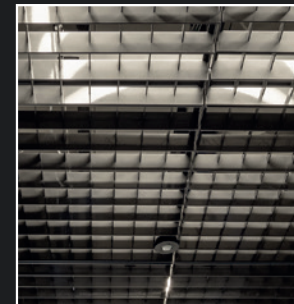
METAL



147—148

AERO:Form™ TRILATERAL OPEN CELL

METAL



149—152

AERO:Form™ GRILLE OPEN CELL

METAL



153—156

AERO:Form™ CROSSROADS OPEN CELL

METAL
FELT

Co:LAB STUDIO

Need something unique? Our Co:LAB STUDIO custom design service lets you create bespoke baffles, tailored to your specifications or designed collaboratively to match your vision. **More on page 157.**



AERO:Form™ | PENDANT

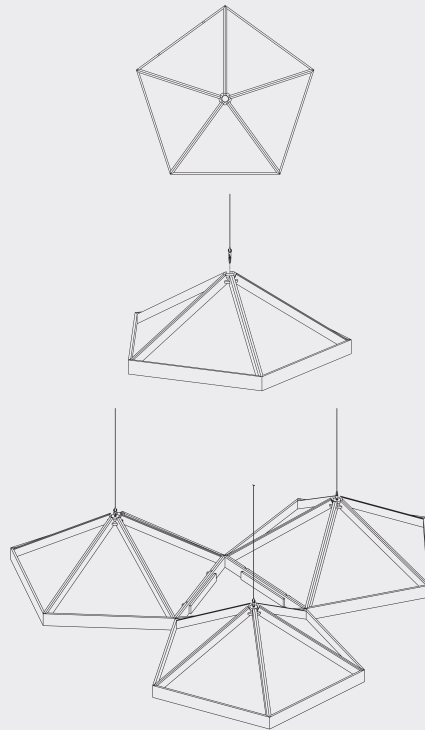
M

AERO:Form™ Pendants offer a bold, sculptural aesthetic that elevates interior spaces. These suspended ceiling elements create visual interest and provide acoustic control, while incorporating lighting and HVAC systems.

KEY FEATURES

- Lightweight and easy to install
- Versatile attachment options. Connector hub detaches for easy plenum access and joins up to six pendants.
- Pendants can be configured individually or in clusters for spaces of any size, allowing integration of lighting and fire suppression systems.
- Cleanable using CDC recommended and EPA-approved disinfectants for fog, spray & wipe

HOW IT WORKS



Pendants can be configured individually or in clusters.



PROJECT: Spencer Valley School
PRODUCT: AERO:Form™ Pendant



AERO:Form™ | PENDANT FELT

Soft, textured, and acoustically effective, our **felt finishes** add warmth and depth to any space. Available in a wide range of colors, they provide both visual appeal and enhanced sound absorption for refined environments.

PHYSICAL DATA



MATERIALS:
(PET) polyester felt. Felt thickness - 9mm (3/8" nominal) and 12 mm (1/2" nominal), other thicknesses available upon request. Application - Felt is not approved for exterior application.



WEIGHT:
0.39 lbs./In.ft.



WARRANTY:
One Year Limited.



FIRE PERFORMANCE:
ASTM E84, Class A. CAN/ULC - S102.2.



VARIATION:
With all felt products color and texture may vary from order to order; adequate attic stock should be ordered.



ACOUSTICS:
Sound absorbing acoustic felt, NRC design dependent.



SUSTAINABILITY:
Supports LEED v5 categories including Embodied Carbon, Indoor Air Quality, Quality of Life- Acoustics and Materials Transparency.



AERO:Form™ | CLOUDS

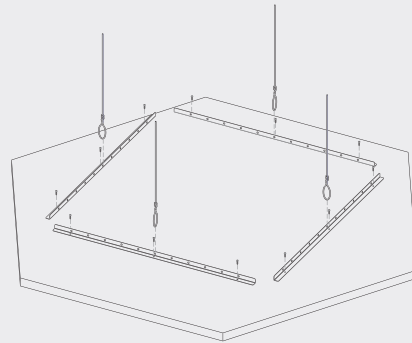
M

AERO:Form™ Clouds deliver versatile and elegant ceiling solutions with floating, multi-layered designs. Clouds reduce noise, enhance aesthetics, and offer endless configurations to support impactful design statements.

KEY FEATURES

- Versatile clouds can be designed and arranged to deliver on your project specific design aesthetic and acoustic performance needs
- Lightweight, pre-assembled & easy to install
- Versatile attachment options
- Lighting integration - clouds can be designed to accommodate all of your integrated lighting designs
- Cleanable using CDC recommended and EPA-approved disinfectants for fog, spray & wipe

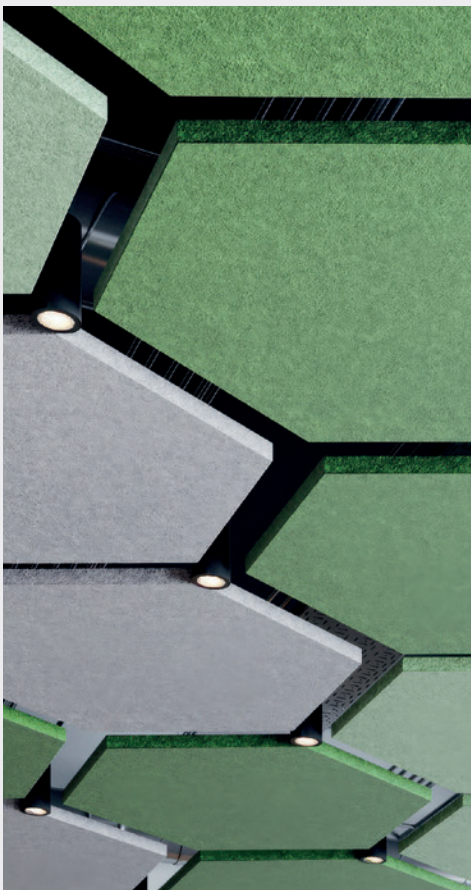
HOW IT WORKS



Offered in a variety of geometric shapes , available made to order in 1/4" increments.

Lengths - up to 8'
Widths - up to 48"

(Nominal sizes, design dependent)



AERO:Form™ | CLOUDS FELT

Soft, textured, and acoustically effective, our **felt finishes** add warmth and depth to any space. Available in a wide range of colors, they provide both visual appeal and enhanced sound absorption for refined environments.

PHYSICAL DATA



MATERIALS:
(PET) polyester felt. Felt thickness - 9mm (3/8" nominal) and 12 mm (1/2" nominal), other thicknesses available upon request. Application - Felt is not approved for exterior application.



WEIGHT:
0.39 lbs./In.ft.



WARRANTY:
One Year Limited.



FIRE PERFORMANCE:
ASTM E84, Class A. CAN/ULC - S102.2.



VARIATION:
With all felt products color and texture may vary from order to order; adequate attic stock should be ordered.



ACOUSTICS:
Sound absorbing acoustic felt, NRC design dependent.



SUSTAINABILITY:
Supports LEED v5 categories including Embodied Carbon, Indoor Air Quality, Quality of Life- Acoustics and Materials Transparency.



PROJECT: American Dream Mall
PRODUCT: AERO:Form™ Custom Open Cell with acoustic panels
Designed in the Co:LAB STUDIO - See page 157

AERO:Form™ OPEN CELL

AERO:Form™ Open Cell ceiling solutions offer a modern, architectural approach to ceiling design—delivering depth, dimension, and visual rhythm to any space. With a wide range of configurations, finishes, and layouts, these systems can be tailored from fully open designs to partially or fully closed concepts using optional infill panels. This flexibility allows for varying levels of openness and acoustic performance while preserving ceiling accessibility.



PROJECT: AB NY Office Hudson Yards
PRODUCT: AERO:Form™ Custom Grille Open Cell
Designed in the Co:LAB STUDIO - See page 157



PROJECT: 400 Atlantic
PRODUCT: AERO:Form™ Parallel Open Cell



PROJECT: Place Victoria
PRODUCT: AERO:Form™ Trilateral Open Cell

PRODUCT: AERO:Form™ Custom Diamond Open Cell
Designed in the Co:LAB STUDIO - See page 157





AERO:Form™ | CUBE OPEN CELL

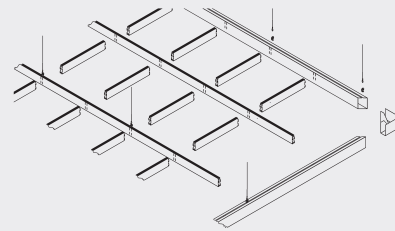
M

AERO:Form™ Cube Open Cell offers a range of ceiling solutions that meet diverse design and performance needs. Choose fabricated profiles for maximum flexibility in terms of beam size and acoustic performance. Opt for extruded profiles when your design requires a more rigid beam in longer lengths and the utmost in durability.

KEY FEATURES

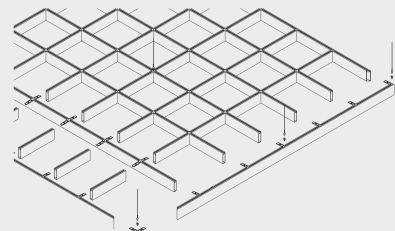
- The cube design offers a uniform symmetrical layout for easy lighting and HVAC integration
- Available in a virtually unlimited variety of open cell sizes
- Versatile attachment options for Unistrut®, 15/16" HD Grid and cable-suspended applications
- Unlimited finish options - custom colors, wood looks, films & felt
- Cleanable using CDC/PHAC and EPA/ECCC approved disinfectants

HOW IT WORKS



Fabricated Metal:

Lengths - up to 12'
 Depths: up to 15"
 Widths: up to 24"



Extruded Metal:

Lengths - up to 12'
 Custom lengths up to 24'
 Standard Size - 1-3/8" x 3-3/8"
 Standard Size - 1-1/2" x 6"
 Standard Size - 2" x 6"



PRODUCT: AERO:Form™ Cube Open Cell



AERO:Form™ | CUBE OPEN CELL METAL

Durable and versatile, our **metal finishes** offer a sleek, modern aesthetic with customizable colors, textures, and perforation options. Designed for longevity, they provide a high-end architectural look with exceptional durability.

PHYSICAL DATA



MATERIALS:
Aluminum | **Fabricated:**
Thickness 0.041" - 0.060" design dependent
Aluminum | **Extruded:**
Thickness 0.08 - 0.125 (profile dependent)



WEIGHT:
Fabricated: Varies from 0.67 - 1.10 lbs./ln.ft.
Extruded: Varies - 1.03 - 1.92 lbs./ln.ft.



WARRANTY:
One Year Limited.



FIRE PERFORMANCE:
ASTM E84, Class A. CAN/ULC - S102.2.



SURFACE FINISH:
Factory-applied polyester paint.
Available in Standard Colors,
Color Matched and Wood Look.



ACOUSTICAL OPTIONS:
Fabricated: Perforated components can be supplied with optional acoustic infill to absorb sound - NRC value vary based on design and configuration.
Extruded: Cannot be perforated.



SUSTAINABILITY:
Supports LEED v5 categories including Embodied Carbon, Indoor Air Quality, Quality of Life- Acoustics, Materials Transparency and Circular Economy.



AERO:Form™ | CUBE OPEN CELL

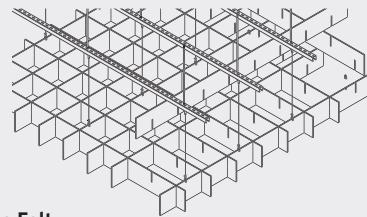
M

AERO:Form™ Felt Cube Open Cell features a network of interconnected beams that form classic cube patterns. Offered in both straight and wave designs, it can be configured as floating elements or extend seamlessly from wall to wall, offering both visual appeal and design flexibility.

KEY FEATURES

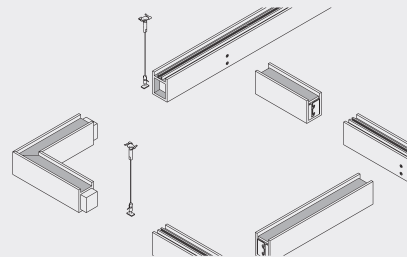
- The cube design offers a uniform symmetrical layout for easy lighting and HVAC integration
- Available in a virtually unlimited variety of open cell sizes
- Versatile attachment options for Unistrut®, 15/16" HD Grid and cable-suspended applications
- Cleanable using CDC recommended and EPA-approved disinfectants for fog, spray & wipe

HOW IT WORKS



Blade Felt:

Standard products available made to order in 1/4" increments.
Lengths - up to 8'
Depths - up to 48"



Profile Felt:

Standard sizes - in addition to custom we also have standard products available made to order in 1/4" increments.
Lengths - up to 8'
Depths - up to 12"
Width - 1.5", 2" (Minimum width = 1.5")



AERO:Form™ | CUBE OPEN CELL FELT

Soft, textured, and acoustically effective, our **felt finishes** add warmth and depth to any space. Available in a wide range of colors, they provide both visual appeal and enhanced sound absorption for refined environments.

PHYSICAL DATA



MATERIALS:
(PET) polyester felt. Felt thickness - 9mm (3/8" nominal) and 12 mm (1/2" nominal), other thicknesses available upon request. Application - Felt is not approved for exterior application.



WEIGHT:
Blade: 0.20 - 0.33 lbs./ln.ft.
Profile: 0.69-1.17 lbs./ln.ft.



WARRANTY:
One Year Limited.



FIRE PERFORMANCE:
ASTM E84, Class A. CAN/ULC - S102.2.



VARIATION:
With all felt products color and texture may vary from order to order; adequate attic stock should be ordered.



ACOUSTICS:
Sound absorbing acoustic felt, NRC design dependent.



SUSTAINABILITY:
Supports LEED v5 categories including Embodied Carbon, Indoor Air Quality, Quality of Life- Acoustics and Materials Transparency.

AERO:Form™ | PARALLEL OPEN CELL

PROJECT: 400 Atlantic
PRODUCT: AERO:Form™ Parallel Open Cell



PROJECT: 400 Atlantic
PRODUCT: AERO:Form™ Parallel Open Cell



PROJECT: 400 Atlantic
PRODUCT: AERO:Form™ Parallel Open Cell

AERO:Form™ Parallel Open Cells create sleek, linear patterns that enhance architectural aesthetics while providing optional sound absorption and customizable finishes. Ideal for open areas, they blend functionality with refined design.

PROJECT: 400 Atlantic
PRODUCT: AERO:Form™ Parallel Open Cell with acoustic panels





AERO:Form™ | PARALLEL OPEN CELL

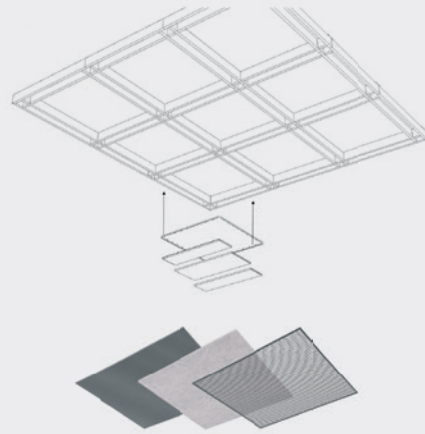
M

AERO:Form™ Parallel Open Cell is a versatile ceiling system offering seamless integration of lighting, HVAC, and sprinklers, with customizable panels and effortless plenum access.

KEY FEATURES

- Lightweight & easy to install via suspension cable
- Open cell design accommodates and provides easy access to lighting, sprinklers, and HVAC components (supplied by others); parallel beam structure conceals these elements when desired.
- Available as open cell or with metal, metal mesh, and felt panels
- Effortlessly integrates lighting options including LED panels
- Cleanable using CDC recommended and EPA-approved disinfectants for fog, spray & wipe

HOW IT WORKS



PANELS ARE AVAILABLE IN METAL, FELT AND METAL MESH

Standard sizes - beam components are available in standard and custom sizes.

Lengths - up to 12'
Depths - up to 15"
Widths - up to 6"



PROJECT: 400 Atlantic
PRODUCT: AERO:Form™ Parallel Open Cell



AERO:Form™ | PARALLEL OPEN CELL METAL

Durable and versatile, our **metal finishes** offer a sleek, modern aesthetic with customizable colors, textures, and perforation options. Designed for longevity, they provide a high-end architectural look with exceptional durability.

PHYSICAL DATA



MATERIALS:
Aluminum | Fabricated.
Thickness 0.041" - 0.060" design dependent.



WEIGHT:
Varies from 0.67 - 1.10 lbs./ln.ft.



WARRANTY:
One Year Limited.



FIRE PERFORMANCE:
ASTM E84, Class A. CAN/ULC - S102.2.



SURFACE FINISH:
Factory-applied polyester paint.
Available in Standard Colors,
Color Matched and Wood Look.



ACOUSTICAL OPTIONS:
Perforated components can be supplied with optional acoustic infill to absorb sound - NRC value vary based on design and configuration.



SUSTAINABILITY:
Supports LEED v5 categories including Embodied Carbon, Indoor Air Quality, Quality of Life- Acoustics, Materials Transparency and Circular Economy.



AERO:Form™ | TRILATERAL OPEN CELL

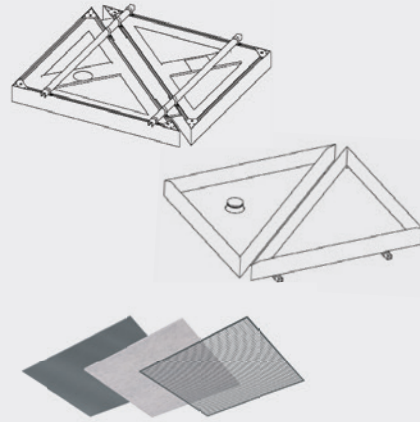
M

AERO:Form™ Trilateral Open Cell features geometric ceiling designs with triangular shapes, offering a unique visual effect. These dynamic panels provide acoustic benefits and create captivating focal points for modern interiors.

KEY FEATURES

- Versatile attachment options for Unistrut®, custom attachment solutions are available
- Open cell design seamlessly accommodates and provides easy access to lighting, sprinklers, and HVAC components
- Available as open cell or with metal, metal mesh, and felt panels, with integrated lighting options available
- Metal panels are available perforated with optional acoustic infills
- Cleanable using CDC recommended and EPA-approved disinfectants for fog, spray & wipe

HOW IT WORKS



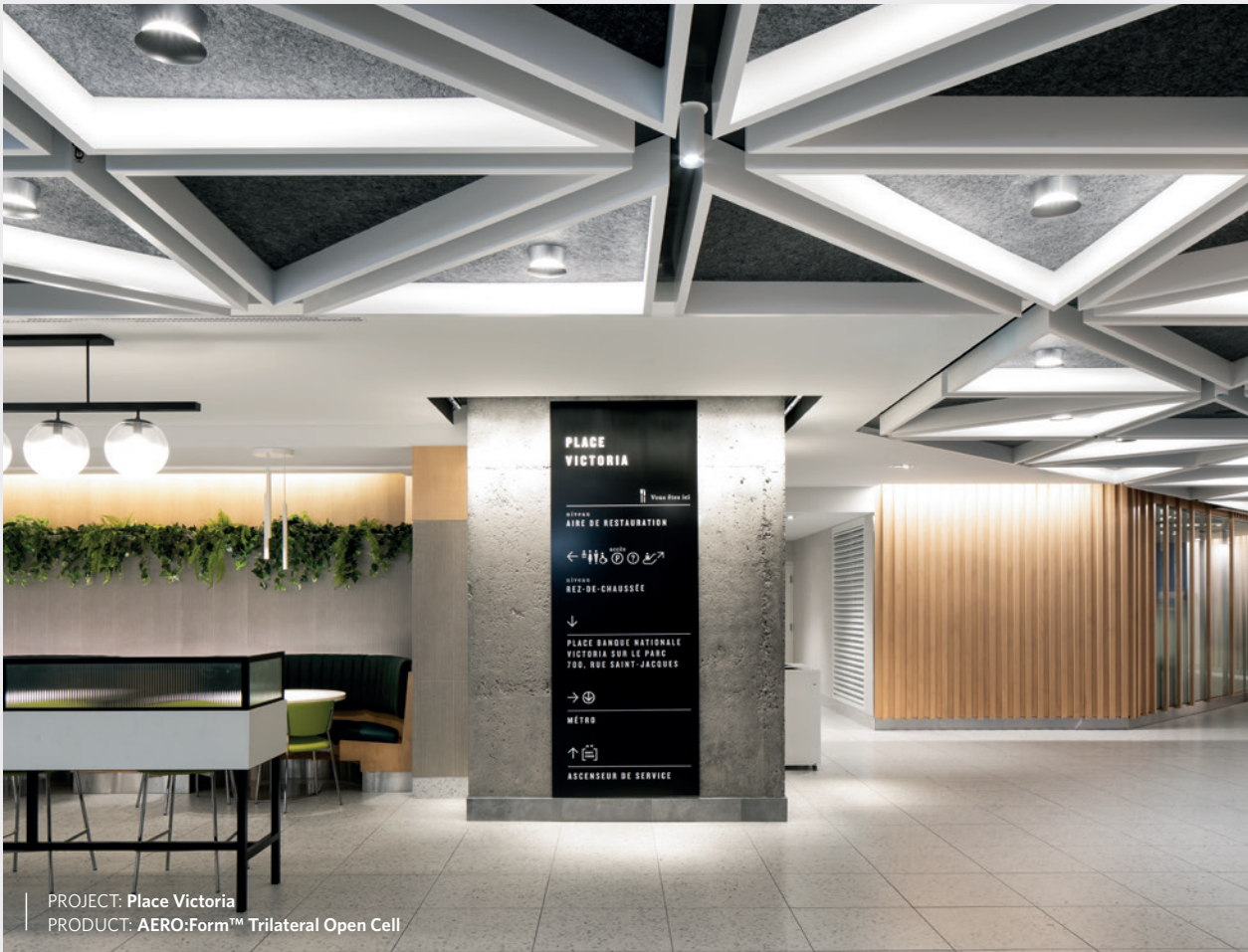
PANELS ARE AVAILABLE IN METAL, FELT AND METAL MESH

Standard sizes - In addition to custom we also have quick ship standard products available made to order Lengths - up to 12'

Standard Size - 1-3/8" x 3-3/8"

Standard Size - 1-1/2" x 6"

Standard Size - 2" x 6"



PROJECT: Place Victoria
PRODUCT: AERO:Form™ Trilateral Open Cell



AERO:Form™ | TRILATERAL OPEN CELL METAL

Durable and versatile, our **metal finishes** offer a sleek, modern aesthetic with customizable colors, textures, and perforation options. Designed for longevity, they provide a high-end architectural look with exceptional durability.

PHYSICAL DATA



MATERIALS:
Aluminum | Extruded:
Thickness 0.08 - 0.125 (profile dependent).



WEIGHT:
Varies from 1.03 - 1.92 lbs./ln.ft.



WARRANTY:
One Year Limited.



FIRE PERFORMANCE:
ASTM E84, Class A. CAN/ULC - S102.2.



SURFACE FINISH:
Factory-applied polyester paint.
Available in Standard Colors,
Color Matched and Wood Look.



ACOUSTICAL OPTIONS:
Perforated components can be supplied with optional acoustic infill to absorb sound - NRC value vary based on design and configuration.



SUSTAINABILITY:
Supports LEED v5 categories including Embodied Carbon, Indoor Air Quality, Quality of Life- Acoustics, Materials Transparency and Circular Economy.

AERO:Form™ | GRILLE OPEN CELL



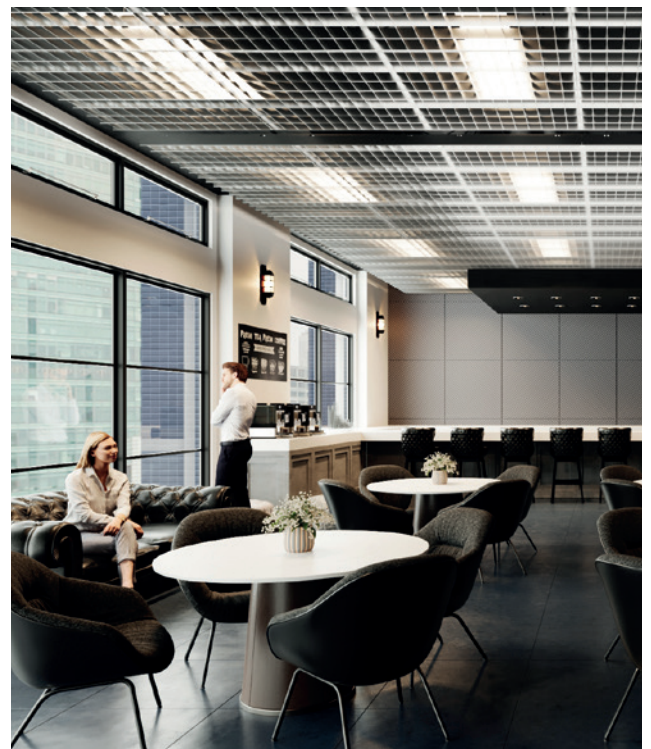
PROJECT: AB NY Office Hudson Yards
PRODUCT: AERO:Form™ Custom Grille Open Cell
Designed in the Co:LAB STUDIO - See page 157



PRODUCT: AERO:Form™ Grille Open Cell

AERO:Form™ Grille Open Cell features an open linear structure and an industrial aesthetic, delivering dynamic, high-impact commercial interiors.

PRODUCT: AERO:Form™ Grille Open Cell





AERO:Form™ | GRILLE OPEN CELL

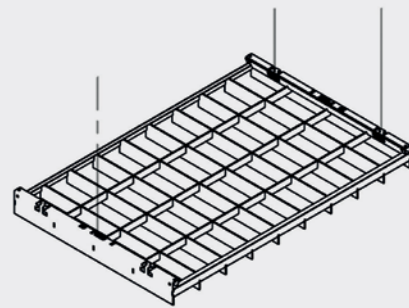
M

AERO:Form™ Grille Open Cell features a distinctive open linear structure that brings an industrial edge and raw sophistication to any space. Its bold architectural form adds depth and texture, creating visual interest while maintaining ceiling accessibility.

KEY FEATURES

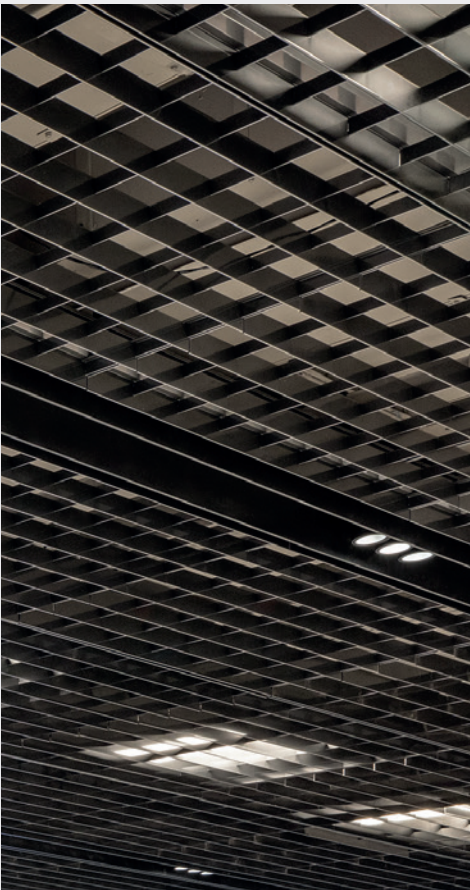
- Open structure design enhances visual depth and promotes airflow for a sleek, industrial look
- High open area percentage (over 70%) is available when required in sprinklered areas to allow unobstructed water flow
- Attaches to 15/16" HD Grid or custom suspension system
- Torsion spring design allows for easy access to the plenum
- Cleanable using CDC recommended and EPA-approved disinfectants for fog, spray & wipe

HOW IT WORKS





PROJECT: AB NY Office Hudson Yards
 PRODUCT: AERO:Form™ Custom Grille Open Cell
 Designed in the Co:LAB STUDIO - See page 157



AERO:Form™ | GRILLE OPEN CELL METAL

Durable and versatile, our **metal finishes** offer a sleek, modern aesthetic with customizable colors, textures, and perforation options. Designed for longevity, they provide a high-end architectural look with exceptional durability.

PHYSICAL DATA



MATERIALS:
 Aluminum | Extruded
 Thickness 0.08 - 0.125 (profile dependent).



WEIGHT:
 2.8 lbs./sq.ft. (2" x 4" grid).



WARRANTY:
 One Year Limited.



FIRE PERFORMANCE:
 ASTM E84, Class A. CAN/ULC - S102.2.

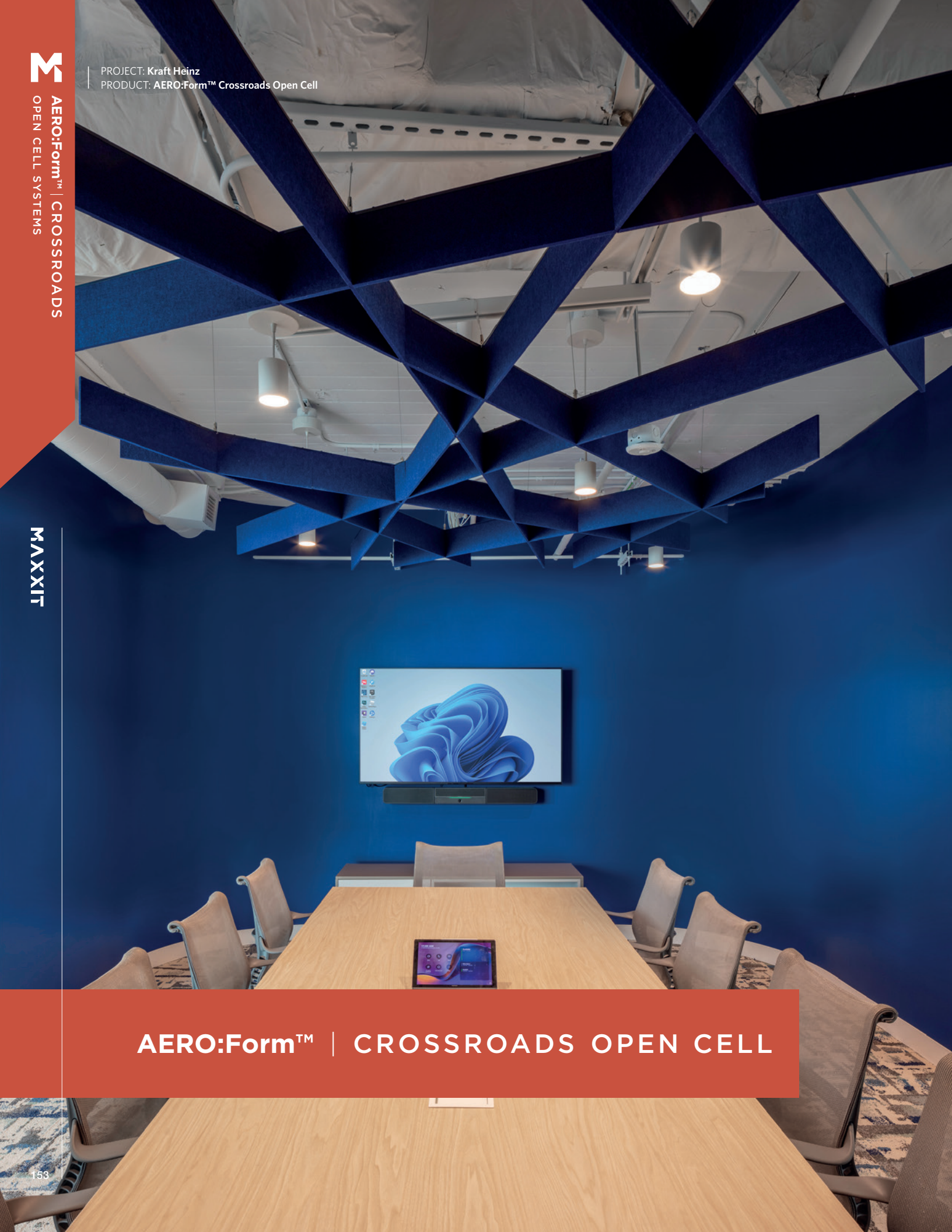


SURFACE FINISH:
 Factory-applied polyester paint.
 Available in Standard Colors,
 and Color Matched.



SUSTAINABILITY:
 Supports LEED v5 categories including
 Embodied Carbon, Indoor Air Quality,
 Quality of Life- Acoustics, Materials
 Transparency and Circular Economy.

PROJECT: Kraft Heinz
PRODUCT: AERO:Form™ Crossroads Open Cell



AERO:Form™ | CROSSROADS OPEN CELL



PROJECT: Jarana New Jersey
PRODUCT: AERO:Form™ Crossroads Open Cell



PROJECT: Jarana New Jersey
PRODUCT: AERO:Form™ Crossroads Open Cell

AERO:Form™ Crossroads Open Cell offers intersecting linear beams that create dynamic patterns and visual interest. These designs deliver exceptional acoustic control and bring architectural sophistication to modern interiors.

PROJECT: Kraft Heinz
PRODUCT: AERO:Form™ Crossroads Open Cell





AERO:Form™ | CROSSROADS OPEN CELL

M

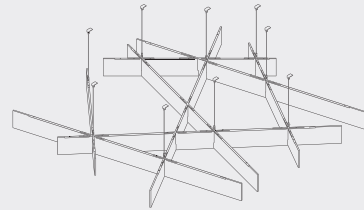
AERO:Form™ Crossroads Open Cell

offers intersecting linear designs for a unique custom look that is easy to configure and install.

KEY FEATURES

- Lightweight & easy to install
- Versatile attachment options for Unistrut®, 15/16" HD Grid and cable-suspended applications (Metal). Flexible and economical cable hung attachment (Felt)
- Easy plenum access - attachment hardware allows baffles to unhook for easy plenum access and adjustment during installation
- Unlimited finish options - custom colors, wood looks, films & felt
- Cleanable using CDC recommended and EPA-approved disinfectants for fog, spray & wipe

HOW IT WORKS



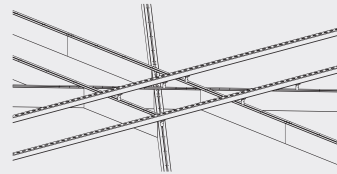
Felt

Standard sizes - in addition to custom we also have standard products available made to order in 1/4" increments.

Lengths - up to 8'

Depths - up to 24"

Widths - 9mm (3/8") & 12mm (1/2")



Metal

Standard sizes - in addition to custom we also have quick ship standard products available made to order.

Lengths - up to 12'

Depths - up to 15"

Widths - up to 6"



AERO:Form™ | CROSSROADS OPEN CELL METAL

Durable and versatile, our **metal finishes** offer a sleek, modern aesthetic with customizable colors, textures, and perforation options. Designed for longevity, they provide a high-end architectural look with exceptional durability.

PHYSICAL DATA



MATERIALS:
Aluminum | Fabricated.
Thickness 0.041" - 0.060" design dependent.



WEIGHT:
Varies from 0.67 - 1.10 lbs./in.ft.



WARRANTY:
One Year Limited.



FIRE PERFORMANCE:
ASTM E84, Class A. CAN/ULC - S102.2.



SURFACE FINISH:
Factory-applied polyester paint.
Available in Standard Colors,
Color Matched and Wood Look.



ACOUSTICAL OPTIONS:
Perforated components can be supplied with optional acoustic infill to absorb sound - NRC value vary based on design and configuration.



SUSTAINABILITY:
Supports LEED v5 categories including Embodied Carbon, Indoor Air Quality, Quality of Life- Acoustics, Materials Transparency and Circular Economy.



AERO:Form™ | CROSSROADS OPEN CELL FELT

Soft, textured, and acoustically effective, our **felt finishes** add warmth and depth to any space. Available in a wide range of colors, they provide both visual appeal and enhanced sound absorption for refined environments.

PHYSICAL DATA



MATERIALS:
(PET) polyester felt. Felt thickness - 9mm (3/8" nominal) and 12 mm (1/2" nominal), other thicknesses available upon request. Application - Felt is not approved for exterior application.



WEIGHT:
0.20 - 0.33 lbs./in.ft.



WARRANTY:
One Year Limited



FIRE PERFORMANCE:
ASTM E84, Class A. CAN/ULC - S102.2.



VARIATION:
With all felt products color and texture may vary from order to order; adequate attic stock should be ordered.



ACOUSTICS:
Sound absorbing acoustic felt, NRC design dependent.



SUSTAINABILITY:
Supports LEED v5 categories including Embodied Carbon, Indoor Air Quality, Quality of Life- Acoustics and Materials Transparency.

PLATINUM CLUB

Co:LAB STUDIO

Co:LAB STUDIO is Maxxit's dedicated custom design service, where we collaborate with architects and designers to create bespoke solutions. From early concept to engineering and production, our proven process helps turn unique ideas into fully realized architectural elements—tailored precisely to your vision, material needs, and performance goals.

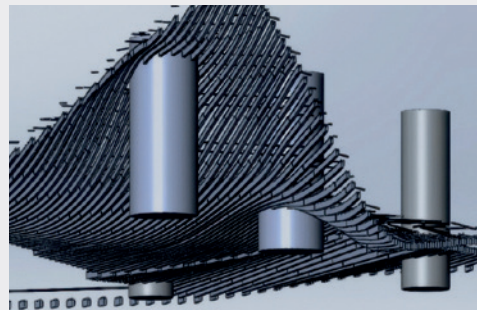
Co:LAB STUDIO

Custom Design, Engineered Together

At **Co:LAB STUDIO**, we follow a clear, collaborative process designed to bring your custom vision to life —efficiently, creatively, and with full technical support from concept to completion.

01 CONCEPT & FEASIBILITY

We begin by reviewing your preliminary drawings or concept ideas to identify the most suitable product and customization approach. Early involvement allows us to guide material selection, explore creative possibilities, and provide indicative costs to support project planning.

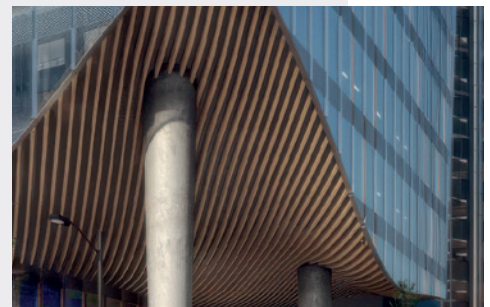


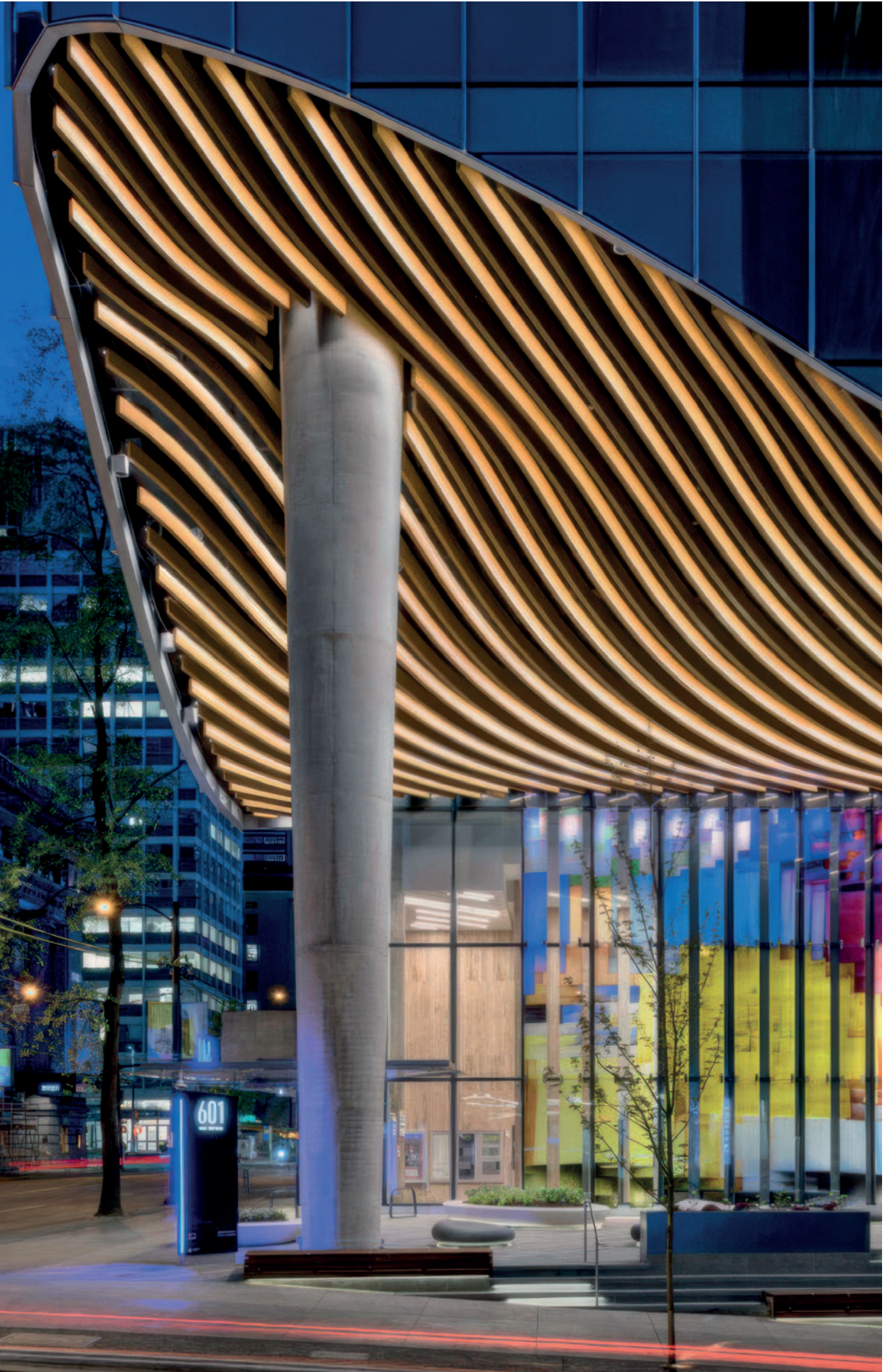
02 DESIGN DEVELOPMENT & PROTOTYPING

Once the direction is defined, we move into engineering and prototyping. Here, we refine the design, confirm material and finish options, and establish clear budgets and timelines. Physical or digital prototypes may be developed to support decision-making.

03 FINAL ENGINEERING & PRODUCTION

With all design elements approved, we produce final shop drawings and control samples, ready for sign-off. We then move into full production, with the option for on-site visits or coordination support if required.







Co:LAB STUDIO & 601 WEST HASTINGS

This iconic mixed-use development in downtown Vancouver, BC seamlessly blends a commercial office tower with a vibrant city park. **Co:LAB STUDIO** collaborated with **B+H Architects** in a Design Assist role to realize a vision that balances bold design with stringent performance requirements.

The project features striking, custom-formed exterior baffles finished to withstand the elements and, visually aligned with the interior elements for a cohesive aesthetic. Maxxit delivered a fully integrated systems solution, incorporating lighting and discreet bird mesh to maintain both performance and visual integrity.

Maxxit fosters a true 'Partnership' approach to design by integrating cutting-edge technologies, expert design knowledge, and a diverse range of materials to meet the unique needs of our valued partners.







Co:LAB STUDIO & WORLD EXCHANGE PLAZA

Maxxit's **Co:LAB STUDIO** partnered with **Benoy** and **EllisDon** to transform World Exchange Plaza, a landmark Class AAA office complex in downtown Ottawa. The revitalization brings bold, functional design to key interior areas through custom ceiling solutions.

Key features include:

Basketweave Ceiling in the second-floor seating area, integrating lighting and life-safety systems while allowing plenum access.

Custom Feature Screen at the Metcalfe entrance is a sculptural focal point that also serves as a light-filtering partition on Level 2.

Decorative Baffles over the Level 2 bridge, enhance visual interest with a clean, modern look.

T-Shaped Baffles on the ground level, highlights the cove lighting and adds a cohesive, contemporary feel to the communal space.



Together, these elements reflect **Co:LAB's** innovative approach. Whether it's a bold sculptural statement, an acoustically optimized installation, or a seamless integration of lighting, our expert team works closely with you to engineer stunning, high-performance solutions that meet your design intent.

Co:LAB STUDIO & CHAMBLY HIGH SCHOOL

As part of a major expansion of Chambly Secondary School, Maxxit's **Co:LAB STUDIO** partnered with **Lemay** and **Groupe Piché**

to create a warm, modern environment that supports learning, connection, and community engagement.



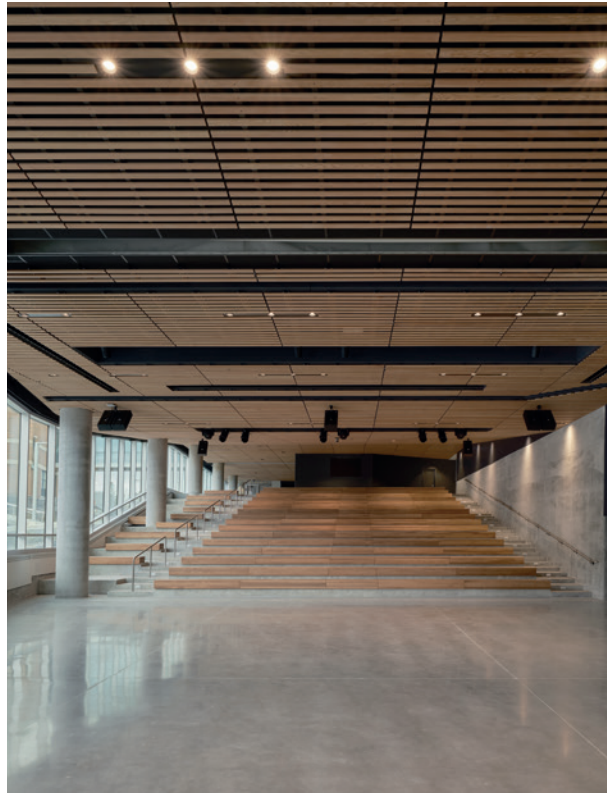
At the heart of the new addition is a light-filled, multi-purpose space that blends a cafeteria, bleachers, and an open auditorium—designed to serve as the school’s central gathering hub.

To support this vision, Maxxit delivered a custom wood slat ceiling system chosen for its biophilic and acoustic properties.

The wood slats, finished in natural tones, create a calm, inviting atmosphere and provide subtle wayfinding through linear design.

The system was engineered with concealed fasteners and precise integration with lighting, fire, and audio systems, ensuring a clean, cohesive aesthetic.

The ceiling installation seamlessly blends into walls in select areas, reinforcing the architectural flow and natural material palette.



Co:LAB STUDIO & SCOTIABANK ARENA

Maxxit Co:LAB STUDIO collaborated with **MLSE** and **PCL Construction** on the Scotiabank Arena Reimagination project to create custom ceiling and wall systems that integrate seamlessly into the arena's modern design.



KEY DESIGN ELEMENTS:

At Gate 1, Backlit Ceiling Panels extend from the wall to the ceiling, and features a custom perforation pattern of Toronto streets, illuminated in team colors, to create a striking visual at the entrance.



In the Premium Area, Backlit Ceiling Panels in a triangular perforation pattern add a refined elegance to the premium seating and player's lounge areas.

The premium MNP Pass Social Club is accentuated with custom Design Perforated Panels designed in a graceful curve that adds a touch of opulence and luxury.

Custom Panels in a metallic finish line the Tunnel Club entry, creating a sleek, luxurious passage to the exclusive dining area.

At Maxxit, we do more than manufacture ceilings—we collaborate, innovate, and elevate. With a keen understanding of architectural detailing we help you push the boundaries of interior design while ensuring precision, performance, and ease of installation.





MAXXIT

Better experience
for you and your customers

At Maxxit, we turn your retail vision into reality with innovative architectural solutions that bring spaces to life.

Tim Hortons



GUCCI



From expansive malls and airport terminals to sports venues and nationwide retail rollouts, we've helped bring iconic spaces to life.

Our Retail Environments group has partnered with brands like **Tim Hortons** and **TD Bank**, and has transformed destinations like **American Dream Mall**, **Rogers Centre**, and **JFK International Airport**.

With deep expertise in metal, felt, millwork, and more, Maxxit simplifies your process by offering design consultation, engineering, and fabrication — all through a single, trusted partner.



See our retail transformations at:
www.maxxitgroup.com/solutions/retail-environments

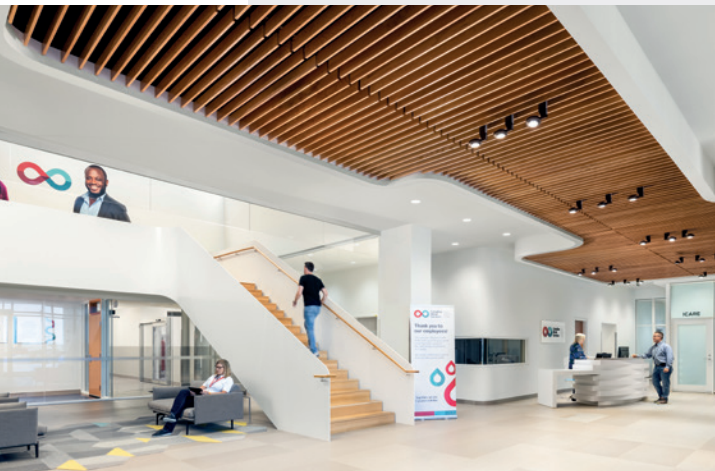


OUR SUSTAINABILITY APPROACH

- Circular design thinking
- Low-impact, recycled, and regional materials
- LEED v5 support & documentation
- Product transparency, EPD's, VOC and acoustic testing

At Maxxit, sustainability is built into everything we do—from responsible sourcing to circular product design. We help architects and designers create healthier spaces through smart materials, low-impact systems, and clear, transparent documentation.

Building Better Together



CIRCULAR ECONOMY

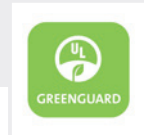
We design with the end in mind—prioritizing recyclable, reusable materials and modular systems that reduce waste and support environmentally responsible construction practices.

LEED & SPECIFICATION SUPPORT

We align with LEED v5 priorities including embodied carbon, healthy materials, and circularity. We provide documentation like EPDs and material transparency reports to simplify sustainable specification.

MATERIALS THAT MATTER

Maxxit products incorporate recycled content, are locally fabricated where possible, and are built for performance and longevity—with sustainability at their core.





YORK UNIVERSITY

“ Seeing the space itself and seeing what we have imagined it to be, to becoming what actually is—that spoke to the way Maxxit saw our vision and helped us achieve it.

It’s great to go from virtual to reality without losing the intent and the key features of what we wanted to achieve in these spaces”

Diamond Schmitt - Associate Architect,
Marcin Sztaba.



MAXXIT

400 ATLANTIC

“

I was a carpenter for 25 years in the union and had never put my hands on a Maxxit system before, but I'm familiar with similar ceilings products. The installation process was straightforward—it goes together like Lego.

Maxxit's team provided critical support throughout the installation process, working closely with A.P. Construction to release ceiling components in stages that aligned with the construction timeline.

They worked with us on releasing sections in a specific order. Their lead times were spot on. Everything showed up as needed, which kept the project moving smoothly.”

Jason Blair - Project Manager
A.P. Construction





MAXXIT

maxxitgroup.com